

Prevent Harassment or Discrimination Report

Last Modified on 02/06/2025 7:53 am CST

Tool Search: CO Data Pipeline

The Prevent Harassment or Discrimination Report provides details on the total number of total harassment or discrimination reports received by the school, along with the type of bias reported when the harassment or discrimination was found.

Prevent Harassment Or Discrimination ☆ Reporting > CO Data Pipeline > Prevent Harassment Or Discrimination

Instructions +

Calendar Setup +

Report Options -

Start Date *
07/01/2023

End Date *
06/30/2024

Ad Hoc Filter
No Filter

Output Options -

Report Processing
 Generate Now
 Submit to Batch Queue

Format Type
 HTML
 CSV

Batch Queue Results -

Start Date MM/DD/YYYY **End Date** MM/DD/YYYY

Report Title	Queued Time ↓	Status
No records available.		

Prevent Harassment or Discrimination Report Editor

Report Logic

Information reports from the student's primary enrollment record as of the entered Effective Date.

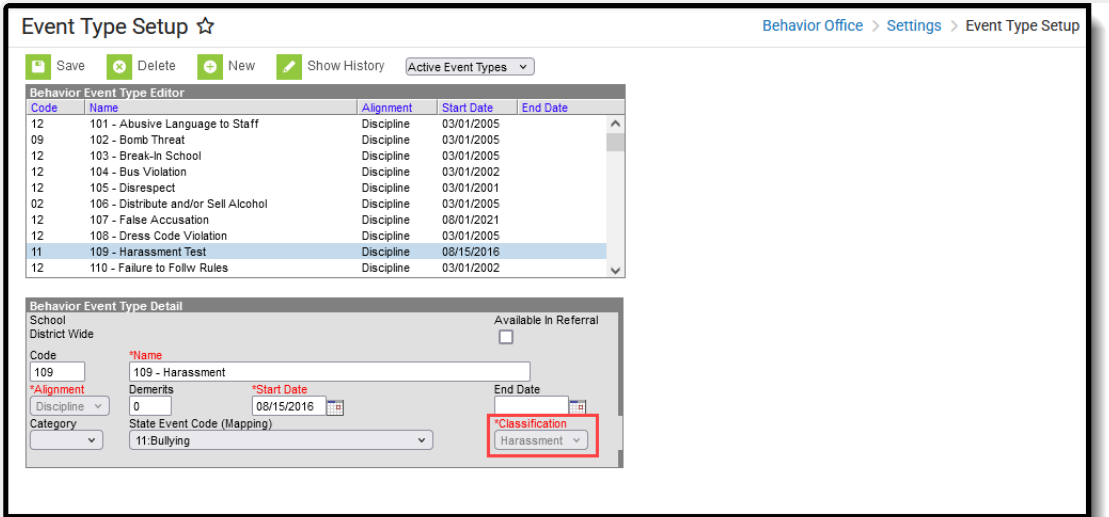
- When the student does not have an active enrollment in the selected calendar, the most recent primary enrollment record is used.
- When there is more than one primary enrollment in the selected calendar, the latest Enrollment Start Date determines which enrollment reports.

One record per student per resolution ID reports.

State Exclude logic is enforced. Students are not reported, even when they meet the above requirements when:

- The Enrollment is marked as State Exclude or No Show.
- The Grade level of enrollment is marked as State Exclude.
- The selected Calendar is marked as State Exclude.

The assigned Behavior Event must have the Harassment Classification field set to Harassment.



Classification Value Assigned on Behavior Event Type

Report Editor

Data Element	Description
Calendar Setup	
Search Calendars	Search field to narrow the list of calendars to select. Use the Expand All/Collapse All. Place a checkbox next to the desired school and calendars.
Show Active Year Only	When set to ON, only those calendars for the current school year are available for selection. When set to OFF, all calendars from all school years are available for selection.
Report Options	
Start Date	Entered date reflects the start of the reporting range in which data reports. This field defaults to July 01 of the school start year.
End Date	Entered date reflects the end of the reporting range in which data reports. This field defaults to June 30 of the school end year.
Ad hoc Filter	Select which students to include in the extract by choosing a filter that was created in the Filter Designer. Only those students included in the filter are included in the report.
Output Options	

Data Element	Description
Report Processing	To generate the report immediately, select Generate Now option. To choose when the report generates, use the Submit to Batch option. Submit to Batch is useful when generating the report for several calendars or for larger amounts of data being reported. See the Batch Queue article for more information.
Format Type	Determines in which format the report generates - CSV or HTML.

Generate the Report

1. Search for and select the desired **Calendars**.
2. Enter the desired **Start and End Dates**.
3. Choose an **Ad hoc Filter** to return just the course and staff information included in the selected filter.
4. Select the desired **Report Processing** option of **Generate Now** or **Submit to Batch Queue**.
5. Select the desired **Format Type**.
6. Click **Generate**. The report displays in the selected format.

Prevent Harassment Or Discrimination Records:3																		
BOCESCode	School Code	Investigation Identifier	Bias Type Disability	Bias Type Race	Bias Type Creed	Bias Type Color	Bias Type Sex	Bias Type Sexual Orientation	Bias Type Gender Identity	Bias Type Gender Expression	Bias Type Family	Bias Type Religion	Bias Type Age	Bias Type National Origin	Bias Type Ancestry	Bias Type No bias reported	Report Investigation Time	
03040	1284	98746	0	1	0	0	0	0	0	0	0	0	0	0	0	0	0	01
03040	1284	98747	1	0	0	0	0	0	0	0	0	0	0	0	0	0	0	01
03040	1284	98748	0	0	0	0	0	0	0	0	0	0	0	0	0	1	0	01

Prevent Harassment or Discrimination HTML Format

Report Layout

Data Element	Description	Location
School District/BOCES Code	<p>The Administrative Unit Code assigned to the school by the Colorado Department of Education.</p> <p>When this field is not populated, 00000 reports.</p> <p><i>Numeric, 4 digits</i></p>	<p>School Information > School Detail > Admin Unit Code</p> <p>School.adminUnitCode</p>

Data Element	Description	Location
School Code	<p>Reports the number the Colorado Department of Education assigned to the school building.</p> <p>This value reports from the calendarID associated with the reported behavior event.</p> <p><i>Numeric, 4 digits</i></p>	<p>School Information > School Detail > Admin Unit Code</p> <p>School.adminUnitCode</p>
Investigation Identifier	<p>A unique number assigned to each behavior incident by each reporting entity (either administrative unit or school district).</p> <p><i>Numeric, 10 digits (padded on the left)</i></p>	<p>Behavior Management > Incident Detail Information > Incident ID</p> <p>BehaviorIncident.incidentID</p>
Bias Type: Disability	<p>Indicates whether the bias type of disability was found as a part of the investigation.</p> <ul style="list-style-type: none"> • Reports a value of 0 when no disability bias was found. • Reports a value of 1 when disability bias was found. <p><i>Numeric, 1 digit</i></p>	<p>Behavior Management > Events and Participants > Events and Participant Details > Participants Details > Show Details > Harassment Type > 01: Disability</p> <p>BehaviorHarassment.harassmentType</p>
Bias Type: Race	<p>Indicates whether the bias type of race was found as a part of the investigation.</p> <ul style="list-style-type: none"> • Reports a value of 0 when no race bias was found. • Reports a value of 1 when race bias was found. <p><i>Numeric, 1 digit</i></p>	<p>Behavior Management > Events and Participants > Events and Participant Details > Participants Details > Show Details > Harassment Type > 02: Race</p> <p>BehaviorHarassment.harassmentType</p>

Data Element	Description	Location
Bias Type: Creed	<p>Indicates whether the bias type of creed was found as a part of the investigation.</p> <ul style="list-style-type: none"> • Reports a value of 0 when no creed bias was found. • Reports a value of 1 when creed bias was found. <p><i>Numeric, 1 digit</i></p>	<p>Behavior Management > Events and Participants > Events and Participant Details > Participants Details > Show Details > Harassment Type > 03: Creed</p> <p>BehaviorHarassment.harassmentType</p>
Bias Type: Color	<p>Indicates whether the bias type of color was found as a part of the investigation.</p> <ul style="list-style-type: none"> • Reports a value of 0 when no color bias was found. • Reports a value of 1 when color bias was found. <p><i>Numeric, 1 digit</i></p>	<p>Behavior Management > Events and Participants > Events and Participant Details > Participants Details > Show Details > Harassment Type > 04: Color</p> <p>BehaviorHarassment.harassmentType</p>
Bias Type: Sex	<p>Indicates whether the bias type of sex was found as a part of the investigation.</p> <ul style="list-style-type: none"> • Reports a value of 0 when no sex bias was found. • Reports a value of 1 when sex bias was found. <p><i>Numeric, 1 digit</i></p>	<p>Behavior Management > Events and Participants > Events and Participant Details > Participants Details > Show Details > Harassment Type > 05: Sex</p> <p>BehaviorHarassment.harassmentType</p>
Bias Type: Sexual Orientation	<p>Indicates whether the bias type of sexual orientation was found as a part of the investigation.</p> <ul style="list-style-type: none"> • Reports a value of 0 when no sexual orientation bias was found. • Reports a value of 1 when sexual orientation bias was found. <p><i>Numeric, 1 digit</i></p>	<p>Behavior Management > Events and Participants > Events and Participant Details > Participants Details > Show Details > Harassment Type > 06: Sexual Orientation</p> <p>BehaviorHarassment.harassmentType</p>

Data Element	Description	Location
Bias Type: Gender Identity	<p>Indicates whether the bias type of gender identity was found as a part of the investigation.</p> <ul style="list-style-type: none"> • Reports a value of 0 when no gender identity bias was found. • Reports a value of 1 when gender identity bias was found. <p><i>Numeric, 1 digit</i></p>	<p>Behavior Management > Events and Participants > Events and Participant Details > Participants Details > Show Details > Harassment Type > 07: Gender Identity</p> <p>BehaviorHarassment.harassmentType</p>
Bias Type: Gender Expression	<p>Indicates whether the bias type of gender expression was found as a part of the investigation.</p> <ul style="list-style-type: none"> • Reports a value of 0 when no gender expression bias was found. • Reports a value of 1 when gender expression bias was found. <p><i>Numeric, 1 digit</i></p>	<p>Behavior Management > Events and Participants > Events and Participant Details > Participants Details > Show Details > Harassment Type > 08: Gender Expression</p> <p>BehaviorHarassment.harassmentType</p>
Bias Type: Family	<p>Indicates whether the bias type of family was found as a part of the investigation.</p> <ul style="list-style-type: none"> • Reports a value of 0 when no family bias was found. • Reports a value of 1 when family bias was found. <p><i>Numeric, 1 digit</i></p>	<p>Behavior Management > Events and Participants > Events and Participant Details > Participants Details > Show Details > Harassment Type > 09: Family</p> <p>BehaviorHarassment.harassmentType</p>
Bias Type: Religion	<p>Indicates whether the bias type of religion was found as a part of the investigation.</p> <ul style="list-style-type: none"> • Reports a value of 0 when no religion bias was found. • Reports a value of 1 when religion was found. <p><i>Numeric, 1 digit</i></p>	<p>Behavior Management > Events and Participants > Events and Participant Details > Participants Details > Show Details > Harassment Type > 10: Religion</p> <p>BehaviorHarassment.harassmentType</p>

Data Element	Description	Location
Bias Type: Age	<p>Indicates whether the bias type of age was found as a part of the investigation.</p> <ul style="list-style-type: none"> • Reports a value of 0 when no age bias was found. • Reports a value of 1 when age was found. <p><i>Numeric, 1 digit</i></p>	<p>Behavior Management > Events and Participants > Events and Participant Details > Participants Details > Show Details > Harassment Type > 11: Age</p> <p>BehaviorHarassment.harassmentType</p>
Bias Type: National Origin	<p>Indicates whether the bias type of national origin was found as a part of the investigation.</p> <ul style="list-style-type: none"> • Reports a value of 0 when no national origin bias was found. • Reports a value of 1 when national origin was found. <p><i>Numeric, 1 digit</i></p>	<p>Behavior Management > Events and Participants > Events and Participant Details > Participants Details > Show Details > Harassment Type > 12: National Origin</p> <p>BehaviorHarassment.harassmentType</p>
Bias Type: Ancestry	<p>Indicates whether the bias type of ancestry was found as a part of the investigation.</p> <ul style="list-style-type: none"> • Reports a value of 0 when no ancestry bias was found. • Reports a value of 1 when ancestry was found. <p><i>Numeric, 1 digit</i></p>	<p>Behavior Management > Events and Participants > Events and Participant Details > Participants Details > Show Details > Harassment Type > 13: Ancestry</p> <p>BehaviorHarassment.harassmentType</p>

Data Element	Description	Location
<p>Bias Type: No bias reported</p>	<p>Indicates no bias type was found as a part of the investigation.</p> <ul style="list-style-type: none"> • Reports a value of 0 when bias was found. • Reports a value of 1 when no bias was found. <p>When this field reports a value of 1, no other fields (fields 4 through 16) can report a value of 1.</p> <p><i>Numeric, 1 digit</i></p>	<p>Behavior Management > Events and Participants > Events and Participant Details > Participants Details > Show Details > Harassment Type > 99: No Bias</p> <p>BehaviorHarassment.harassmentType</p>
<p>Report Investigation Time</p>	<p>Indicates whether the time to complete the investigation for the reported harassment or discrimination was completed within 60 school days, 90 school days, or past 90 school days.</p> <ul style="list-style-type: none"> • 01: Within 60 school days • 02: Within 61-90 school days • 03: Exceeded 90 school days <p>The reported code is the result of the Resolution Start Date minus the Resolution End Date.</p> <p><i>Numeric, 2 digits</i></p>	<p>Behavior Management > Events and Participants > Participants Details/Add Resolution > Show Details > Resolution Start Date, Resolution End Date</p> <p>BehaviorResolution.startDate BehaviorResolution.endDate</p>