

# School Discipline and Attendance - Student Demographics (Colorado) [.2231 - .2415]

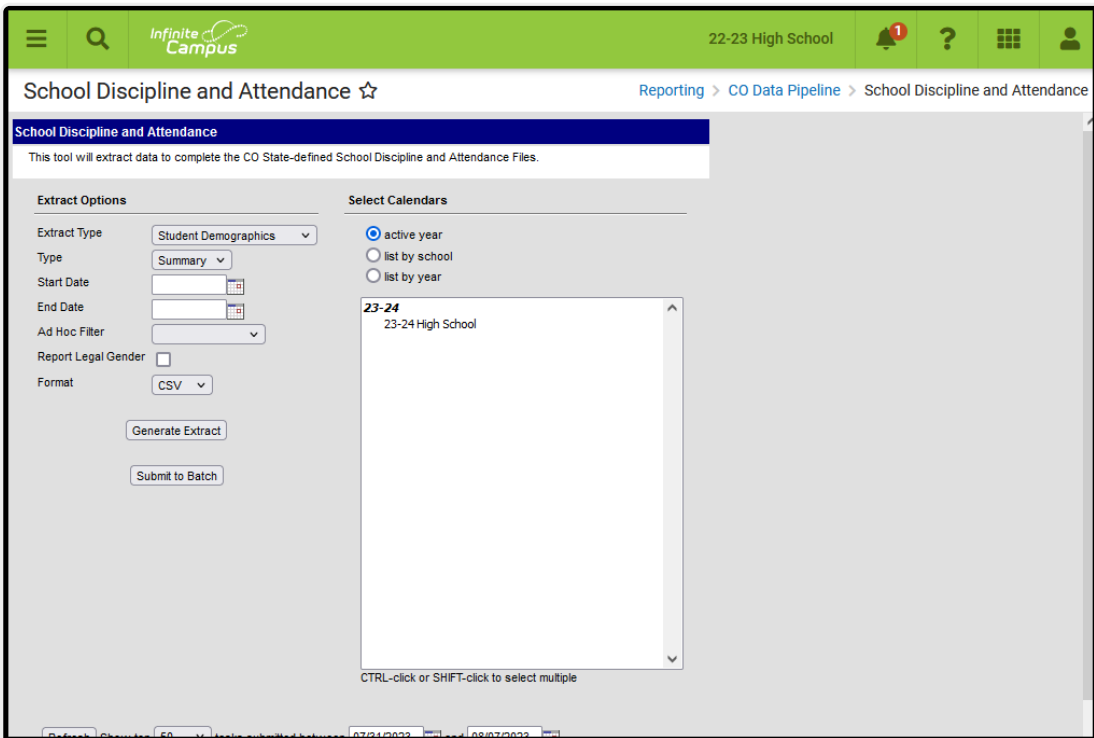
Last Modified on 05/03/2024 8:58 am CDT

As of the Campus.2419 Release Pack, the Student Demographics Report, part of the School Discipline and Attendance Report has been replaced with the [Discipline Interchange Action File](#).

[Report Logic](#) | [Report Editor](#) | [Generate the Report](#) | [Report Layout](#)

Tool Search: School Discipline and Attendance

The Student Demographics File reports ALL students involved in behavior incidents that are reported in the [Discipline by Action File](#). One record reports for each student with an applicable behavior incident and resolution where at least one day falls within the reporting period (Start Date - End Date, entered on the report editor).



*School Discipline and Attendance Student Demographics Extract*

**Read** - Access and generate School Discipline and Attendance - Student Demographics.  
**Write** - N/A  
**Add** - N/A

### Delete - N/A

For more information about Tool Rights and how they function, see the [Tool Rights](#) article.

Data reports for each unique combination in the following categories:

- Race/Ethnicity
- Gender
- Grade Level
- Special Education Involvement
- 504 Status
- ELL Status

The Summary Type reports the total number of students for the specified behavior/allegation type. The Detail Type reports each student's behavior event/resolutions by event.

The **Detail Type** is NOT in a state-compliant format.

## Report Logic

The **Summary Report Type** reports a record reports for each individual student involved in Behavior Incidents and Behavior Resolutions that report in the [Discipline by Action](#) Extract, where at least one day falls within the reporting period. Only one record reports for each student per incident. When there are no discipline incidents for the student, a record is not reported.

When a student has more than one event with a resolution tied to an incident, the resolution that has a value in the Most Serious Action field reports; when that field is not populated, the resolution with the highest eventID (most recently generated). When more than one student is tied to an incident, each student reports.

- Enrollment Service Type is Primary (P), Partial (S) or Special Ed Services (N).
- Grade level of enrollment is 002, 004, 006, 007, 010, 020, 030, 040, 050, 060, 070, 080, 090, 100, 110, 120.
- Behavior Incidents contain Behavior Events with state-mapped resolutions. All events must have a resolution with a mapped resolution in order to report EXCEPT Event Codes 18-22.
- At least one day of the Behavior Incident and resolution must fall within the reporting period.
- The resolution must have occurred in the selected calendar. When a behavior event occurs on the last day of school for the 2021-22 school year, but the resolution was not assigned until the first day of the 2022-23 school year, the record reports when the 2022-23 calendar is selected.

When the role assigned to a participant is Victim, a resolution is NOT required for the following fields:

- Students Reported as Harassed or Bullied on the Basis of Sex (field 24).

- Students Reported as Harassed or Bullied on the Basis of Race or Color of National Origin (field 25).
- Students Reported as Harassed or Bullied on the Basis of Disability (field 26).

**All resolutions mapped to a state code of 06: Referred to Law Enforcement are counted, regardless of the Most Severe field being marked.** This may cause more than one resolution to report for an incident.

The **Detail Report Type** uses the same logic, except that it reports ALL resolutions tied to reportable incidents, regardless of when they are marked as Most Serious or not, **one line per student for every resolution that reports on the Summary Report Type.** This means the counts on the Detail Report Type DO NOT match the counts on the Summary Report Type when an incident includes more than one student.

Students are not included when:

- The enrollment is marked as State Exclude or no show.
- The grade level of enrollment is marked as State Exclude.
- The calendar of enrollment is marked as State Exclude.

## Non-Binary Gender Reporting

Schools can assign students a gender of M: Male, F: Female or N: Non-binary. This is done on the [Identities](#) tool and/or the [Demographics](#) tool.

Data Pipeline Extracts and other required extracts use the Legal Gender field included in the Protected Identity Information to report student identity information.

To properly record a gender of N: Non-Binary, on the Identities tool:

1. Assign the **Gender of N: Non-Binary** in the standard identify fields.
2. Assign the **Protected Identity Information Legal Gender** field to M: Male, F: Female or N: Non-Binary.
3. Save the record when finished.

**Identities** ☆ Census > People > Identities

Student, Luka A DOB: 04/16/2006  
 AHS Class of 2024 Related Tools ^

**Identity Information**

PersonID: 120648

\*Last Name: Student \*First Name: Luka Middle Name: Andrea Suffix:

\*Gender: N: Nonbinary Pronouns:

\*Birth Date (Age: 17): 04/16/2006 Soc Sec Number:

Protected Identity Information

Legal Last Name: Student Legal First Name: Luka Legal Middle Name:  Legal Suffix:

Legal Gender: Female

Race/Ethnicity [\(Edit\)](#)

*Gender and Legal Gender Assignment*

# Report Editor

| Data Element              | Description                                                                                                                                                                                                                                |
|---------------------------|--------------------------------------------------------------------------------------------------------------------------------------------------------------------------------------------------------------------------------------------|
| <b>Extract Type</b>       | Selection indicates what file generates. <ul style="list-style-type: none"> <li>• Discipline by Action</li> <li>• Firearm (GFSA)</li> <li>• Attendance Data File</li> <li>• Student Demographics</li> </ul>                                |
| <b>Type</b>               | Indicates whether a Summary report generates or a Detail report generates. Note that the Detail Type is NOT in a state-compliant format.                                                                                                   |
| <b>Start Date</b>         | Indicates the start date by which to report behavior events. At least one day of the Behavior Incident must fall within or on the start and end date. Dates are entered in <i>mmddyy</i> format or use the calendar icon to select a date. |
| <b>End Date</b>           | Indicates the end date by which to report behavior events. At least one day of the Behavior Incident must fall within or on the start and end date. Dates are entered in <i>mmddyy</i> format or use the calendar icon to select a date.   |
| <b>Ad hoc Filter</b>      | When chosen, only those students included in the selected ad hoc filter are reported in the extract, when they meet the requirements of the extract.                                                                                       |
| <b>Format</b>             | Determines the layout of the report. Choose either CSV or HTML.                                                                                                                                                                            |
| <b>Calendar Selection</b> | Select at least one calendar from which to report student discipline information.                                                                                                                                                          |

| Data Element             | Description                                                                                                                                                                                                                                                                                                                  |
|--------------------------|------------------------------------------------------------------------------------------------------------------------------------------------------------------------------------------------------------------------------------------------------------------------------------------------------------------------------|
| <b>Report Generation</b> | Use the <b>Generate Extract</b> button to display the results of the extract immediately. When there is a larger data set being reported, use the <b>Submit to Batch</b> option to choose when the extract generates (after or before school hours, etc.). See the <a href="#">Batch Queue</a> article for more information. |

## Generate the Report

1. Select the **Student Demographics** Extract Type.
2. Select either the **Summary Report Type** or the **Detail Report Type**.
3. Enter a **Start Date** and **End Date**.
4. If desired, select an **Ad hoc Filter** to return only students included in that filter.
5. Select the desired **Format**, either CSV or HTML, from the dropdown list.
6. Select at least one **Calendar** from which to report discipline records. Calendars can be chosen by active year, by school name or by year.
7. Click the **Generate Extract** button or the **Submit to Batch** button. The report displays in the selected format.

|   | A           | B         | C          | D      | E         | F           | G          | H          | I         | J         | K         | L        | M        | To |
|---|-------------|-----------|------------|--------|-----------|-------------|------------|------------|-----------|-----------|-----------|----------|----------|----|
| 1 | District Cc | School Co | Ethnicity/ | Gender | Grade Lev | Disability, | Section 50 | LEP Status | Unduplica | Classroom | In-School | Received | Received | To |
| 2 | 123         | 350       | 5          | 1      | 110       | 0           | 0          | 0          | 1         | 0         | 0         | 0        | 0        | 0  |
| 3 | 123         | 515       | 5          | 2      | 110       | 0           | 0          | 0          | 3         | 0         | 3         | 0        | 0        | 0  |
| 4 | 123         | 169       | 4          | 1      | 120       | 0           | 0          | 1          | 1         | 0         | 0         | 0        | 0        | 0  |
| 5 | 123         | 186       | 5          | 2      | 90        | 0           | 1          | 1          | 1         | 0         | 0         | 0        | 0        | 0  |
| 6 | 123         | 1475      | 5          | 1      | 120       | 0           | 0          | 0          | 1         | 0         | 0         | 0        | 0        | 0  |

Student Demographics - CSV Format

| District Code | School Code | Ethnicity/Race | Gender | Grade Level | Disability/IDEA Status | Section 504 Status | LEP Status | Unduplicated Count Of Students Disciplined | Classroom Removals | In-School Suspensions | Received Only One Out-Of-School Suspension | Received More Than One Out-Of-School Suspension | Total Out-Of-School Suspensions | Expulsions With Educational Services | Exp Wi Educ Ser |
|---------------|-------------|----------------|--------|-------------|------------------------|--------------------|------------|--------------------------------------------|--------------------|-----------------------|--------------------------------------------|-------------------------------------------------|---------------------------------|--------------------------------------|-----------------|
| 0123          | 0125        | 05             | 01     | 110         | 0                      | 0                  | 0          | 0001                                       | 0000               | 0000                  | 0000                                       | 0000                                            | 0000                            | 0000                                 | 0000            |
| 0123          | 0125        | 05             | 02     | 110         | 0                      | 0                  | 0          | 0003                                       | 0000               | 0003                  | 0000                                       | 0000                                            | 0000                            | 0000                                 | 0000            |
| 0123          | 0548        | 04             | 01     | 120         | 0                      | 0                  | 1          | 0001                                       | 0000               | 0000                  | 0000                                       | 0000                                            | 0000                            | 0000                                 | 0000            |
| 0123          | 0548        | 05             | 02     | 090         | 0                      | 1                  | 1          | 0001                                       | 0000               | 0000                  | 0000                                       | 0000                                            | 0000                            | 0000                                 | 0000            |
| 0123          | 7854        | 05             | 01     | 120         | 0                      | 0                  | 0          | 0001                                       | 0000               | 0000                  | 0000                                       | 0000                                            | 0000                            | 0000                                 | 0000            |

Student Demographics - HTML Format

## Report Layout

| Data Elements | Description                                                 | Location                                                            |
|---------------|-------------------------------------------------------------|---------------------------------------------------------------------|
| District Code | Reports the State District Number.<br><br>Numeric, 4 digits | District Information > State District Number<br><br>District.number |

| Data Elements      | Description                                                                                                                                                                                                                                                                                                                                                                                                                                                                                                                                                                                                                                                                                                                                                                                                                                                                                                                                                                                                   | Location                                                                                                                                                                                                                                                                                                                                                                                                                                               |
|--------------------|---------------------------------------------------------------------------------------------------------------------------------------------------------------------------------------------------------------------------------------------------------------------------------------------------------------------------------------------------------------------------------------------------------------------------------------------------------------------------------------------------------------------------------------------------------------------------------------------------------------------------------------------------------------------------------------------------------------------------------------------------------------------------------------------------------------------------------------------------------------------------------------------------------------------------------------------------------------------------------------------------------------|--------------------------------------------------------------------------------------------------------------------------------------------------------------------------------------------------------------------------------------------------------------------------------------------------------------------------------------------------------------------------------------------------------------------------------------------------------|
| <p>School Code</p> | <p>Reports the number assigned to the school building by the state department of education. This value reports from the student's enrollment that was active on the date of the incident. When the student has more than one enrollment that was active on the date of incident, the value reports from the Primary enrollment.</p> <p>When a student has a Special Education Attendance Code of 31: Administrative Unit OR 32: State-Operated Program, the four-digit code reports from the Serving District field.</p> <p>For all other students:</p> <ul style="list-style-type: none"> <li>• The Service Agency/Facility code reports, when populated.</li> <li>• When the Service Agency/Facility Code field is not populated, the School of Accountability reports, when populated.</li> <li>• When the School of Accountability field is not populated, the School Number reports.</li> <li>• When all of these fields are not populated, a value of 0000 reports.</li> </ul> <p>Numeric, 4 digits</p> | <p>Enrollments &gt; State Reporting Fields &gt; Serving District</p> <p>Enrollment.serviceDistrict</p> <hr/> <p>Enrollments &gt; Special Education Fields &gt; Service Agency/Facility Code</p> <p>Enrollment.serviceFacility</p> <hr/> <p>Enrollments &gt; State Reporting Fields &gt; School of Accountability</p> <p>Enrollment.residentSchool</p> <hr/> <p>School Information &gt; School Editor &gt; State School Number</p> <p>School.number</p> |

| Data Elements  | Description                                                                                                                                                                                                                                                                                                                                                                                                                                                                                                                                                                        | Location                                                                                                                                        |
|----------------|------------------------------------------------------------------------------------------------------------------------------------------------------------------------------------------------------------------------------------------------------------------------------------------------------------------------------------------------------------------------------------------------------------------------------------------------------------------------------------------------------------------------------------------------------------------------------------|-------------------------------------------------------------------------------------------------------------------------------------------------|
| Ethnicity/Race | <p>Reports the student's race/ethnicity code:</p> <ul style="list-style-type: none"> <li>• 01 - American Indian or Alaska Native</li> <li>• 02 - Asian</li> <li>• 03- Black (not Hispanic)</li> <li>• 04 - Hispanic</li> <li>• 05 - White (not Hispanic)</li> <li>• 06 - Native Hawaiian or other Pacific Islander</li> <li>• 07 - Multiple races</li> </ul> <p>Numeric, 2 digits</p>                                                                                                                                                                                              | <p>Demographics &gt; Person Information &gt; Race/Ethnicity</p> <p>Identity.raceEthnicity</p>                                                   |
| Gender         | <p>Reports the gender assigned to the student when the Report Legal Gender checkbox is marked.</p> <ul style="list-style-type: none"> <li>• 01 - Female</li> <li>• 02 - Male</li> <li>• 03 - Non-Binary</li> </ul> <p>Numeric, 2 digits</p>                                                                                                                                                                                                                                                                                                                                        | <p>Demographics &gt; Person Information &gt; Gender</p> <p>Identity.gender</p>                                                                  |
| Grade Level    | <p>Reports the grade level of the student for the reported action.</p> <ul style="list-style-type: none"> <li>• 004 - Pre-Kindergarten (preschool)</li> <li>• 006: Half Day Kindergarten</li> <li>• 007 - Full Day Kindergarten</li> <li>• 010 - Grade 1</li> <li>• 020 - Grade 2</li> <li>• 030 - Grade 3</li> <li>• 040 - Grade 4</li> <li>• 050 - Grade 5</li> <li>• 060 - Grade 6</li> <li>• 070 - Grade 7</li> <li>• 080 - Grade 8</li> <li>• 090 - Grade 9</li> <li>• 100 - Grade 10</li> <li>• 110 - Grade 11</li> <li>• 120 - Grade 12</li> </ul> <p>Numeric, 3 digits</p> | <p>Enrollments &gt; General Enrollment Information &gt; Grade</p> <p>Enrollment.grade</p> <hr/> <p>Grade Level Setup &gt; State Grade Level</p> |

| Data Elements                 | Description                                                                                                                                                                                                                                                                                                                                                                                                                                                    | Location                                                                                                                                                                                                                                                                                                                                                                                       |
|-------------------------------|----------------------------------------------------------------------------------------------------------------------------------------------------------------------------------------------------------------------------------------------------------------------------------------------------------------------------------------------------------------------------------------------------------------------------------------------------------------|------------------------------------------------------------------------------------------------------------------------------------------------------------------------------------------------------------------------------------------------------------------------------------------------------------------------------------------------------------------------------------------------|
| <p>Disability/IDEA Status</p> | <p>indicates when the record is for an IDEA/Special Education student.</p> <p>Reports a value of 1 when:</p> <ul style="list-style-type: none"> <li>• The Behavior Incident Date falls within the Special Education Start and Exit Dates on the Enrollment Record</li> <li>• The student has an active locked IEP at the time of the incident.</li> </ul> <p>Otherwise, reports a value of zero (0).</p> <p>Numeric, 1 digit</p>                               | <p>Enrollments &gt; Special Ed Fields &gt; Special Ed Start Date, Special Ed Exit Date</p> <p>Enrollment.spedStartDate<br/>Enrollment.spedExitDate</p> <hr/> <p>Special Education &gt; Documents &gt; IEP</p> <hr/> <p>Behavior Management &gt; Date of Incident</p> <p>BehaviorEvent.date</p> <hr/> <p>Behavior Management &gt; Resolution Start Date</p> <p>BehaviorResolution.startDate</p> |
| <p>Section 504 Status</p>     | <p>Indicates when the record is for students identified as handicapped under regulations implementing Section 504 of the Rehabilitation Act of 1973, but may or may not be eligible for special education placement under the Individuals with Disabilities Education Act.</p> <p>Reports a value of 1 when there is a Section 504 record at any point during the reporting period.</p> <p>Otherwise, reports a value of zero (0).</p> <p>Numeric, 1 digit</p> | <p>Program Participation &gt; Section 504</p> <p>Section504.section504ID</p>                                                                                                                                                                                                                                                                                                                   |



| Data Elements                              | Description                                                                                                                                                                                                                                                                                                                                                                            | Location                                                                                                       |
|--------------------------------------------|----------------------------------------------------------------------------------------------------------------------------------------------------------------------------------------------------------------------------------------------------------------------------------------------------------------------------------------------------------------------------------------|----------------------------------------------------------------------------------------------------------------|
| LEP Status                                 | <p>Indicates when the record is for a student who was identified as being Limited English Proficient.</p> <p>Reports based on the student's LEP Status as of the time of the incident.</p> <ul style="list-style-type: none"> <li>• For students who do not have LEP services, reports 0.</li> <li>• For students who have LEP services, reports 1.</li> </ul> <p>Numeric, 1 digit</p> | <p>Program &gt; Program Participation &gt; LEP &gt; LEP</p> <p>Lep.lep</p>                                     |
| Unduplicated Count of Students Disciplined | <p>Reports the unduplicated count of students involved in a behavior incident in which the State Behavior Resolution Code is 00-09, 11.</p> <p>When a student has a behavior event with a State Resolution Code of 00-09 and 11, a count of 1 reports.</p> <p>Otherwise, a value of zero (0) reports.</p> <p>Numeric, 1 digit</p>                                                      | <p>Behavior Management &gt; Incident &gt; Events and Participation &gt; Resolution</p> <p>Calculated value</p> |

| Data Elements         | Description                                                                                                                                                                                                                                                                                                                                                                                                                                                                                      | Location                                                                                                       |
|-----------------------|--------------------------------------------------------------------------------------------------------------------------------------------------------------------------------------------------------------------------------------------------------------------------------------------------------------------------------------------------------------------------------------------------------------------------------------------------------------------------------------------------|----------------------------------------------------------------------------------------------------------------|
| Classroom Removals    | <p>Reports the total number of students (not incidents) who were removed by the teacher or suspended from the classroom. When a student was removed or suspended multiple times, each time is included in this count.</p> <p>Reports the count of instances when a student has a behavior event with a State Behavior Resolution Code is 01: Classroom Suspension/Teacher Removal marked as Most Serious Resolution.</p> <p>Otherwise, reports a value of zero (0).</p> <p>Numeric, 4 digits</p> | <p>Behavior Management &gt; Incident &gt; Events and Participation &gt; Resolution</p> <p>Calculated value</p> |
| In-School Suspensions | <p>Reports the total number of students (not incidents) who received an in-school suspension. When a student received multiple in-school suspensions, each time is included in this count.</p> <p>Reports a count of instances when a student has a behavior event with a State Behavior Resolution Code is 02: In School Suspension marked as Most Serious Resolution.</p> <p>Otherwise, reports a value of zero (0).</p> <p>Numeric, 4 digits</p>                                              | <p>Behavior Management &gt; Incident &gt; Events and Participation &gt; Resolution</p> <p>Calculated value</p> |

| Data Elements                                          | Description                                                                                                                                                                                                                                                                                                                                                                                                                                                                                   | Location                                                                                                       |
|--------------------------------------------------------|-----------------------------------------------------------------------------------------------------------------------------------------------------------------------------------------------------------------------------------------------------------------------------------------------------------------------------------------------------------------------------------------------------------------------------------------------------------------------------------------------|----------------------------------------------------------------------------------------------------------------|
| <p>Received Only One Out-of-School Suspension</p>      | <p>Reports the total number of students (not incidents) who received just one out-of-school suspension in the school year.</p> <p>Reports a value of 1 when the student has a behavior event with a State Behavior Resolution Code is 03: Out of School Suspension marked as Most Serious Resolution AND the resolution was assigned to the student only once in the selected calendar year.</p> <p>Otherwise, reports a value of zero (0).</p> <p>Numeric, 4 digits</p>                      | <p>Behavior Management &gt; Incident &gt; Events and Participation &gt; Resolution</p> <p>Calculated value</p> |
| <p>Received More than One Out-of-School Suspension</p> | <p>Reports the total number of students (not incidents) who received an out-of-school suspension more than once during the school year.</p> <p>Reports a value of 1 when the student has a behavior event with a State Behavior Resolution Code is 03: Out of School Suspension marked as Most Serious Resolution AND the resolution was assigned to the student two or more times in the selected calendar year.</p> <p>Otherwise, reports a value of zero (0).</p> <p>Numeric, 4 digits</p> | <p>Behavior Management &gt; Incident &gt; Events and Participation &gt; Resolution</p> <p>Calculated value</p> |

| Data Elements                               | Description                                                                                                                                                                                                                                                                                                                                                                                                                                                                                  | Location                                                                                                       |
|---------------------------------------------|----------------------------------------------------------------------------------------------------------------------------------------------------------------------------------------------------------------------------------------------------------------------------------------------------------------------------------------------------------------------------------------------------------------------------------------------------------------------------------------------|----------------------------------------------------------------------------------------------------------------|
| <p>Total Out-of-School Suspensions</p>      | <p>Reports the total number of students (not incidents) who received an out-of-school suspension. All instances of the student receiving an out-of-school suspension are counted.</p> <p>Reports a value of 1 when the student has a behavior event with a State Behavior Resolution Code is 03: Out of School Suspension marked as Most Serious Resolution.</p> <p>Otherwise, reports a value of zero (0).</p> <p>Numeric, 1 digit</p>                                                      | <p>Behavior Management &gt; Incident &gt; Events and Participation &gt; Resolution</p> <p>Calculated value</p> |
| <p>Expulsions with Educational Services</p> | <p>Reports the total number of students (not incidents) who were expelled and were provided with educational services during the expulsion.</p> <p>Reports the total number of instances when the student has a behavior event with a State Behavior Resolution Code is 04, 05, 08 or 11 marked as Most Serious Resolution AND Services During Expulsion is marked. All occurrences for the student are counted.</p> <p>Otherwise, reports a value of zero (0).</p> <p>Numeric, 4 digits</p> | <p>Behavior Management &gt; Incident &gt; Events and Participation &gt; Resolution</p> <p>Calculated value</p> |

| Data Elements                                  | Description                                                                                                                                                                                                                                                                                                                                                                                                                                                                                          | Location                                                                                                       |
|------------------------------------------------|------------------------------------------------------------------------------------------------------------------------------------------------------------------------------------------------------------------------------------------------------------------------------------------------------------------------------------------------------------------------------------------------------------------------------------------------------------------------------------------------------|----------------------------------------------------------------------------------------------------------------|
| <p>Expulsions without Educational Services</p> | <p>Reports the total number of students (not incidents) who were expelled and were not provided with educational services during the expulsion.</p> <p>Reports the total number of instances when the student has a behavior event with a State Behavior Resolution Code is 04, 05, 08 or 11 marked as Most Serious Resolution AND Services During Expulsion is not marked. All occurrences for the student are counted.</p> <p>Otherwise, reports a value of zero (0).</p> <p>Numeric, 4 digits</p> | <p>Behavior Management &gt; Incident &gt; Events and Participation &gt; Resolution</p> <p>Calculated value</p> |

| Data Elements                   | Description                                                                                                                                                                                                                                                                                                                                                                                                                                                                                                                                                                                                                  | Location                                                                                                       |
|---------------------------------|------------------------------------------------------------------------------------------------------------------------------------------------------------------------------------------------------------------------------------------------------------------------------------------------------------------------------------------------------------------------------------------------------------------------------------------------------------------------------------------------------------------------------------------------------------------------------------------------------------------------------|----------------------------------------------------------------------------------------------------------------|
| <p>Law Enforcement Referral</p> | <p>Reports the total number of students (not incidents) referred to law enforcement. Each time a student was referred to law enforcement is counted.</p> <p>Reports the total number of instances when the student has a behavior event with a State Behavior Resolution Code is 06: Referred to Law Enforcement for Most Serious Action OR when the student has a behavior event with a State Behavior Resolution Code is 06: Referred to Law Enforcement.</p> <p>Otherwise, reports a value of zero (0).</p> <p>When the State Behavior Resolution Code is 18-22, that event is not included.</p> <p>Numeric, 4 digits</p> | <p>Behavior Management &gt; Incident &gt; Events and Participation &gt; Resolution</p> <p>Calculated value</p> |
| <p>School Related Arrest</p>    | <p>Reports the total number of students (not incidents) who were arrested for any activity conducted on the school grounds, during off-campus school activities, or due to a referral by any school official.</p> <p>Reports the total number of instances when the student has a behavior event with a State Behavior Resolution Code AND the School Related Arrest checkbox is marked.</p> <p>Otherwise, reports a value of zero (0).</p> <p>Numeric, 4 digits</p>                                                                                                                                                         | <p>Behavior Management &gt; Incident &gt; Events and Participation &gt; Resolution</p> <p>Calculated value</p> |

| Data Elements | Description                                                                                                                                                                                                                                                                                                                                                                                                                                                                                                                                                                                                                                                                                 | Location                                                                                                       |
|---------------|---------------------------------------------------------------------------------------------------------------------------------------------------------------------------------------------------------------------------------------------------------------------------------------------------------------------------------------------------------------------------------------------------------------------------------------------------------------------------------------------------------------------------------------------------------------------------------------------------------------------------------------------------------------------------------------------|----------------------------------------------------------------------------------------------------------------|
| Other Action  | <p>Reports the total number of students (not incidents) in which another action was taken that has not been counted in any other category. Each other action is included, even when the student has been counted multiple times.</p> <p>Reports the total number of instances when the student has a behavior event with a State Behavior Resolution Code is 07: Other Action Taken or 09: Removal Other, Death, Incarcerated, etc marked as Most Serious Resolution.</p> <p>Otherwise, reports a value of zero (0).</p> <p>The value reported here matches the value reported for the Other Actions field on the <a href="#">Discipline by Action</a> report.</p> <p>Numeric, 4 digits</p> | <p>Behavior Management &gt; Incident &gt; Events and Participation &gt; Resolution</p> <p>Calculated value</p> |

| Data Elements                            | Description                                                                                                                                                                                                                                                                                                                                                                                                                                                                                                                                           | Location                                                                                                                                                          |
|------------------------------------------|-------------------------------------------------------------------------------------------------------------------------------------------------------------------------------------------------------------------------------------------------------------------------------------------------------------------------------------------------------------------------------------------------------------------------------------------------------------------------------------------------------------------------------------------------------|-------------------------------------------------------------------------------------------------------------------------------------------------------------------|
| <p>Transferred To Alternative School</p> | <p>Reports the number of students for each demographic combination who meet all of the following:</p> <ul style="list-style-type: none"> <li>• State Behavior Resolution Code is 04, 05, 08, 09 or 11.</li> <li>• The Services during Expulsion checkbox is marked.</li> <li>• The Transferred to Alternative School checkbox is marked (The Transferred to Alternative School checkbox is located at Behavior &gt; Behavior Management &gt; Behavior Resolution).</li> </ul> <p>Otherwise, reports a value of zero (0).</p> <p>Numeric, 4 digits</p> | <p>Behavior Management &gt; Incident &gt; Events and Participation &gt; Resolution</p> <p>Calculated value</p>                                                    |
| <p>Subjected to Mechanical Restraint</p> | <p>Summary Report Type:<br/>Reports the sum of students for each demographic combination where the Behavior Event is assigned a Behavior Response code of M. All occurrences for the student are counted.</p> <p>Detail Report Type:<br/>Reports a count of Behavior Events assigned a Behavior Response code of M for the reported student.</p> <p>Numeric, 4 digits</p>                                                                                                                                                                             | <p>Behavior Management &gt; Incident &gt; Events and Participation &gt; Response Details &gt; Response Type = M: Mechanical Restraint</p> <p>Calculated value</p> |



| Data Elements                          | Description                                                                                                                                                                                                                                                                                                                                                               | Location                                                                                                                                                        |
|----------------------------------------|---------------------------------------------------------------------------------------------------------------------------------------------------------------------------------------------------------------------------------------------------------------------------------------------------------------------------------------------------------------------------|-----------------------------------------------------------------------------------------------------------------------------------------------------------------|
| <p>Subjected to Physical Restraint</p> | <p>Summary Report Type:<br/>Reports the sum of students for each demographic combination where the Behavior Event is assigned a Behavior Response code of P. All occurrences for the student are counted.</p> <p>Detail Report Type:<br/>Reports a count of Behavior Events assigned a Behavior Response code of P for the reported student.</p> <p>Numeric, 4 digits</p> | <p>Behavior Management &gt; Incident &gt; Events and Participation &gt; Response Details &gt; Response Type = P: Physical Restraint</p> <p>Calculated value</p> |
| <p>Subjected to Seclusion</p>          | <p>Summary Report Type:<br/>Reports the sum of students for each demographic combination where the Behavior Event is assigned a Behavior Response Code of S. All occurrences for the student are counted.</p> <p>Detail Report Type:<br/>Reports a count of Behavior Events assigned a Behavior Response code of S for the reported student.</p> <p>Numeric, 4 digits</p> | <p>Behavior Management &gt; Incident &gt; Events and Participation &gt; Response Details &gt; Response Type = S: Seclusion</p> <p>Calculated value</p>          |

| Data Elements                                                                                    | Description                                                                                                                                                                                                                                                                                                                                                                                                                                                                                                      | Location                                                                                                                                                                                                                                                                                   |
|--------------------------------------------------------------------------------------------------|------------------------------------------------------------------------------------------------------------------------------------------------------------------------------------------------------------------------------------------------------------------------------------------------------------------------------------------------------------------------------------------------------------------------------------------------------------------------------------------------------------------|--------------------------------------------------------------------------------------------------------------------------------------------------------------------------------------------------------------------------------------------------------------------------------------------|
| <p>Students Reported as Harassed or Bullied on the Basis of Sex</p>                              | <p>Summary Report Type:<br/>Reports the sum of students for each demographic combination where the Behavior Event has a State Event Code of 18 and the Student Role is Victim. All occurrences for the student are counted.</p> <p>Detail Report Type:<br/>Reports a count of Behavior Events that have a State Event Code of 18 and the Student Role is Victim for the reported student.</p> <p>NOTE: For both Report Types, a Behavior Resolution is NOT required for this field.</p> <p>Numeric, 4 digits</p> | <p>Behavior Management &gt; Incident &gt; Events and Participation &gt; Participant Details &gt; Role = V: Victim</p> <p>Behavior Event Types &gt; State Event Code = 18: Allegations of harassment or bullying on the basis of sex</p> <p>Calculated value</p>                            |
| <p>Students Reported as Harassed or Bullied on the Basis of Race or Color or National Origin</p> | <p>Summary Report Type:<br/>Reports the sum of students for each demographic combination where the Behavior Event has a State Event Code of 19 and the Student Role is Victim. All occurrences for the student are counted.</p> <p>Detail Report Type:<br/>Reports a count of Behavior Events that have a State Event Code of 19 and the Student Role is Victim for the reported student.</p> <p>NOTE: For both Report Types, a Behavior Resolution is NOT required for this field.</p> <p>Numeric, 4 digits</p> | <p>Behavior Management &gt; Incident &gt; Events and Participation &gt; Participant Details &gt; Role = V: Victim</p> <p>Behavior Event Types &gt; State Event Code = 19: Allegations of harassment or bullying on the basis of race, color or national origin</p> <p>Calculated value</p> |

| Data Elements                                                              | Description                                                                                                                                                                                                                                                                                                                                                                                                                                                                                                      | Location                                                                                                                                                                                                                                                               |
|----------------------------------------------------------------------------|------------------------------------------------------------------------------------------------------------------------------------------------------------------------------------------------------------------------------------------------------------------------------------------------------------------------------------------------------------------------------------------------------------------------------------------------------------------------------------------------------------------|------------------------------------------------------------------------------------------------------------------------------------------------------------------------------------------------------------------------------------------------------------------------|
| <p>Students Reported as Harassed or Bullied on the Basis of Disability</p> | <p>Summary Report Type:<br/>Reports the sum of students for each demographic combination where the Behavior Event has a State Event Code of 20 and the Student Role is Victim. All occurrences for the student are counted.</p> <p>Detail Report Type:<br/>Reports a count of Behavior Events that have a State Event Code of 20 and the Student Role is Victim for the reported student.</p> <p>NOTE: For both Report Types, a Behavior Resolution is NOT required for this field.</p> <p>Numeric, 4 digits</p> | <p>Behavior Management &gt; Incident &gt; Events and Participation &gt; Participant Details &gt; Role = V: Victim</p> <p>Behavior Event Types &gt; State Event Code = 20: Allegations of harassment or bullying on the basis of disability</p> <p>Calculated value</p> |
| <p>Students Disciplined for Bullying or Harassment on the Basis of Sex</p> | <p>Summary Report Type:<br/>Reports the sum of students for each demographic combination where the Behavior Event has a State Event Code of 18 and the Student Role is Offender. All occurrences for the student are counted.</p> <p>Detail Report Type:<br/>Reports a count of Behavior Events that have a State Event Code of 18 and the Student Role is Offender for the reported student.</p> <p>Numeric, 4 digits</p>                                                                                       | <p>Behavior Management &gt; Incident &gt; Events and Participation &gt; Participant Details &gt; Role = O: Offender</p> <p>Behavior Event Types &gt; State Event Code = 18: Allegations of harassment or bullying on the basis of sex</p> <p>Calculated value</p>      |

| Data Elements                                                                                           | Description                                                                                                                                                                                                                                                                                                                                                                                                                | Location                                                                                                                                                                                                                                                                                     |
|---------------------------------------------------------------------------------------------------------|----------------------------------------------------------------------------------------------------------------------------------------------------------------------------------------------------------------------------------------------------------------------------------------------------------------------------------------------------------------------------------------------------------------------------|----------------------------------------------------------------------------------------------------------------------------------------------------------------------------------------------------------------------------------------------------------------------------------------------|
| <p>Students Disciplined for Bullying or Harassment on the Basis of Race or Color or National Origin</p> | <p>Summary Report Type:<br/>Reports the sum of students for each demographic combination where the Behavior Event has a State Event Code of 19 and the Student Role is Offender. All occurrences for the student are counted.</p> <p>Detail Report Type:<br/>Reports a count of Behavior Events that have a State Event Code of 19 and the Student Role is Offender for the reported student.</p> <p>Numeric, 4 digits</p> | <p>Behavior Management &gt; Incident &gt; Events and Participation &gt; Participant Details &gt; Role = O: Offender</p> <p>Behavior Event Types &gt; State Event Code = 19: Allegations of harassment or bullying on the basis of race, color or national origin</p> <p>Calculated value</p> |
| <p>Students Disciplined for Bullying or Harassment on the Basis of Disability</p>                       | <p>Summary Report Type:<br/>Reports the sum of students for each demographic combination where the Behavior Event has a State Event Code of 20 and the Student Role is Offender. All occurrences for the student are counted.</p> <p>Detail Report Type:<br/>Reports a count of Behavior Events that have a State Event Code of 20 and the Student Role is Offender for the reported student.</p> <p>Numeric, 4 digits</p> | <p>Behavior Management &gt; Incident &gt; Events and Participation &gt; Participant Details &gt; Role = O: Offender</p> <p>Behavior Event Types &gt; State Event Code = 20: Allegations of harassment or bullying on the basis of disability</p> <p>Calculated value</p>                     |
| <p>LASID</p>                                                                                            | <p>Reports the student's local student number.</p> <p>Numeric, 10 digits</p>                                                                                                                                                                                                                                                                                                                                               | <p>Demographics &gt; Student Number</p> <p>Person.studentNumber</p>                                                                                                                                                                                                                          |

| Data Elements | Description                                                                                                                                                                                                                    | Location                                                                                      |
|---------------|--------------------------------------------------------------------------------------------------------------------------------------------------------------------------------------------------------------------------------|-----------------------------------------------------------------------------------------------|
| Incident ID   | <p>Reports the incident ID.</p> <p>This field only reports on the Detail Type Report.</p> <p>Numeric, 10 digits</p>                                                                                                            | <p>Behavior Management &gt; Incident ID</p> <p>BehaviorIncident.incidentID</p>                |
| Most Serious  | <p>When the Resolution being reported is marked as Most Serious, this field reports Yes.</p> <p>Otherwise, this field reports No.</p> <p>This field only reports on the Detail Type Report.</p> <p>Alphanumeric, Yes or No</p> | <p>Behavior Management &gt; Most Serious Action</p> <p>BehaviorIncident.mostSeriousAction</p> |