

Behavior (Colorado)

Last Modified on 04/15/2024 12:07 pm CDT

[Behavior Setup](#) | [Behavior Management](#)

The Behavior module provides tools for monitoring and recording behavior incidents, for creating letters for parents/guardians regarding student's behavior and for generating reports related to behavior.

Behavior Admin fields that are specific to the state of Colorado are described below.

Behavior Setup

[Event Types](#) | [Resolution Types](#) | [Response Types](#)

The Behavior Admin tool is used to setup behavior events/incidents, resolutions, and responses. For all other inquiries, please visit the [Event Types](#) article.

Event Types

Tool Search: Event Type Setup

The screenshot shows the 'Event Type Setup' interface. At the top, there are navigation links: 'Behavior Office > Settings > Event Type Setup'. Below this are action buttons: 'Save', 'Delete', 'New', 'Show History', and a dropdown menu for 'Active Event Types'. The main content is divided into two sections:

Behavior Event Type Editor

Code	Name	Alignment	Start Date	End Date
12	101 - Abusive Language to Staff	Discipline	03/01/2005	
09	102 - Bomb Threat	Discipline	03/01/2005	
12	103 - Break-In School	Discipline	03/01/2005	
12	104 - Bus Violation	Discipline	03/01/2002	
12	105 - Disrespect	Discipline	03/01/2001	
02	106 - Distribute and/or Sell Alcohol	Discipline	03/01/2005	
12	107 - False Accusation	Discipline	08/01/2021	
12	108 - Dress Code Violation	Discipline	03/01/2005	
12	110 - Failure to Follow Rules	Discipline	03/01/2002	
12	111 - Failure to Serve Detention	Discipline	03/01/2005	

Behavior Event Type Detail

School: District Wide Available In Referral

Code: 12 *Name: 104 - Bus Violation

*Alignment: Discipline Demerits: 0

Category: Serious *Start Date: 03/01/2002

End Date: []

*Classification: None

State Event Code (Mapping): 12:Other Violation of Code of Conduct

Behavior Event Type Setup

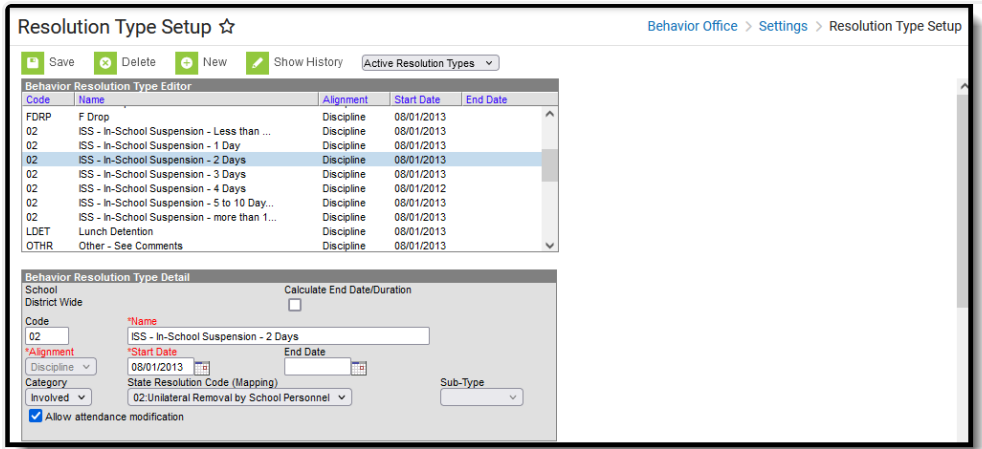
State Event Code (Mapping)

State Event Codes indicate the reason a student was subject to a disciplinary action. These are the official state codes to which all district-defined behavior events/incidents should be mapped. Behavior events/incidents that are not mapped to a state event code do NOT report.

▶ [Click here to expand...](#)

Resolution Types

Tool Search: Resolution Type Setup



Behavior Resolution Type Setup

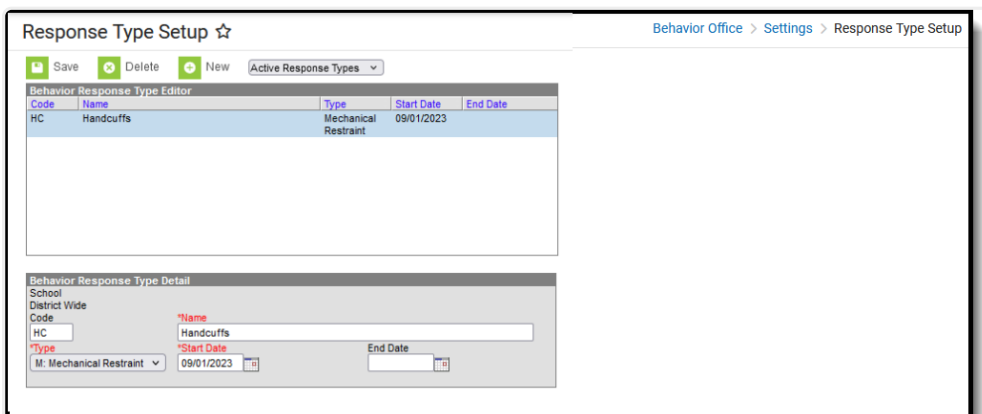
State Resolution Code (Mapping)

State Resolution Codes indicate the type of disciplinary action taken for a student. These are the official state codes to which all district-defined behavior resolutions should be mapped. Behavior resolutions that are not mapped to a state event code do NOT report.

▶ [Click here to expand...](#)

Response Types

Tool Search: Response Type Setup



Behavior Response Types

Handcuffed Status

A Response Type of **Handcuffed Status** reports on the Discipline Interchange when the Response

Type is assigned to the Behavior Resolution. It must be set up as follows:

- Code = HC or H (must be capital letters)
- Type = Mechanical Restraint

On the report, the field Handcuffed Status reports a value of Y or N as an indication that the student was handcuffed as a response to the behavior event.

▶ [Click here to expand...](#)

Behavior Management

[Weapon](#) | [Behavior Resolution Fields](#)

Tool Search: Behavior Management

Behavior Management fields that are specific to the state of Colorado are described below. For all other inquiries, please visit the [Behavior Management](#) article.

The screenshot displays the 'Behavior Management' tool interface. At the top, there are navigation links for 'Behavior Office', 'Behavior Management', and 'Behavior Management'. Below this, there are buttons for 'Save', 'Delete', and 'New'. A 'Status Filter' is set to 'Submitted/In-Progress' and an 'Alignment Filter' is set to 'Discipline/Award'.

The main section is titled 'Incident Management Editor' and contains a table with the following data:

Title	Date/Time	Behavior Incident Location	Context	Submitted By	Status	Locked
Possession of a Vape Pen-Marijuana	10/02/2023 12:29 PM	Hallway	During passing	Staff, Larry	IP	
Possession of a Vape Pen Insubordination	09/27/2023 12:16 PM	Hallway	During passing	Staff, Larry	IP	
Detrimental Behavior off Campus	09/15/2023 3:00 PM	Off Grounds	Other time during school hours	Staff, Kathy	IP	
Offensive Language	09/15/2023 10:13 AM	Classroom	During class	Staff, Ben	IP	
Harrass Staff	09/14/2023 12:02 PM	Classroom	During class	Staff, Amber	IP	
Bully/Harrass on Basis of Sex/Gender	08/18/2023 1:54 PM		During lunch/recess	Staff, Alice	IP	

Below the table is the 'Incident Detail Information' section. It includes fields for 'Incident ID: 96188', 'Status: In-Progress', and 'Submitted Date: 10/02/2023 02:37 PM'. The 'Alignment' is set to 'Discipline' and the 'Title' is 'Possession of a Vape Pen-Marijuana'. The 'Date of Incident' is '10/02/2023' and the 'Time of Incident' is '12:29 PM'. The 'Context' is '4: During passing' and the 'Behavior Incident Location' is 'H: Hallway'. The 'Most Serious Event' is 'Possession of Drug Paraphernalia' and the 'Most Serious Action' is 'Out of School Suspension - 3 Days (Resolution ID: 1661302)'. A 'Details' section contains a text description of the incident: 'During passing period after lunch, a student passed a vape/marijuana pen to Hunter. Hunter then tried to dispose of the vape pen in the trash can, but missed. The vape pen then landed in the hallway next to the trash can. A teacher witnessed Hunter trying to put the vape pen in the trash and asked the him to pick it up and hand it to him. The teacher then brought the vape pen down to the office and reported it to administration.'

At the bottom, there is an 'Events and Participants' section showing '130 - Possession of Drug Paraphernalia (Event ID: 208560)' and 'Harold Student - Offender'. There are buttons for 'Add Event/Participant', 'Add Resolution', 'Add Behavior Response', and 'Manage Files'.

Behavior Management Tool

Weapon

A coded value representing the Weapon Category. A Weapon Category is category describing which type of firearm or other weapon was used in an incident occurring within the jurisdiction of a local educational agency. This is the weapon (if any) used by the specific student and for the specific offense being reported.

▶ [Click here to expand...](#)

Behavior Resolution Fields

Behavior Management Resolution fields that are specific to the state of Colorado are described below. For all other inquiries, see how to [Add a Behavior Resolution](#).

Behavior Resolution Detail Editor

Services During Expulsion

When marked, indicates the Special Education student received services during their expulsion from school.

▶ [Click here to expand...](#)

Referred to Law Enforcement

When marked, indicates the offender was referred to law enforcement.

▶ [Click here to expand...](#)

School Related Arrest

When marked, indicates the offender had a school-related arrest.

▶ [Click here to expand...](#)

Transferred to Alternative School

When marked, indicates the student transferred to another school during their expulsion.

▶ [Click here to expand...](#)

