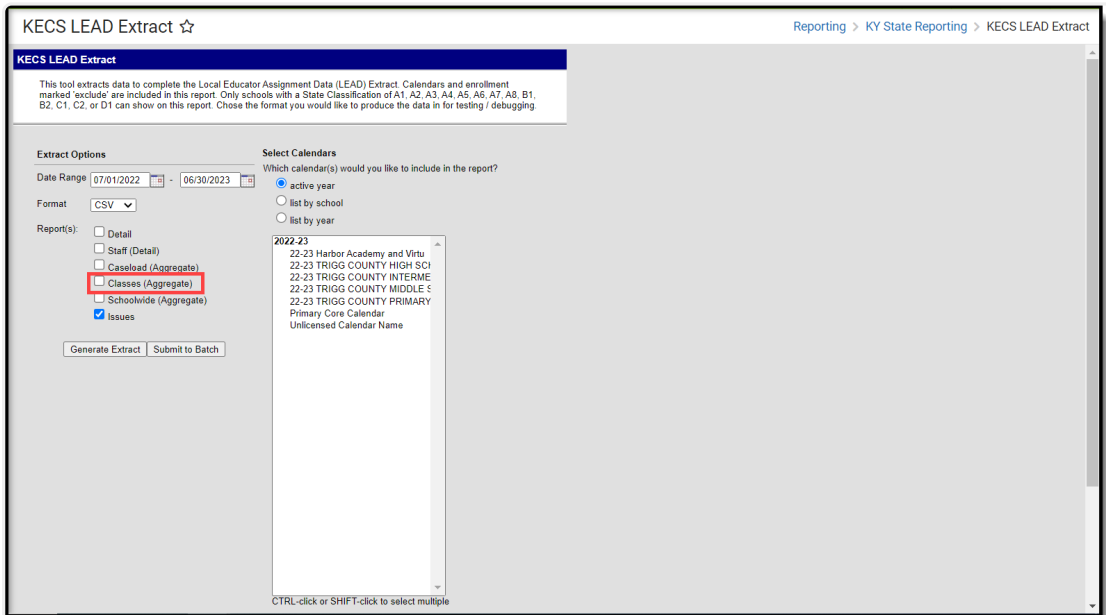


KECS LEAD Extract Classes (Aggregate) Report

Last Modified on 03/11/2024 8:47 am CDT

Tool Search: KECS LEAD Extract

[KECS LEAD Extract Classes \(Aggregate\) Report](#) | [Classes \(Aggregate\) Logic](#) | [Classes \(Aggregate\) Report Layout](#) | [Appendix A: State Classification Values](#)



KECS LEAD Extract Classes (Aggregate) Report

Classes (Aggregate) Logic

The report will generate an aggregated list of course sections for a given calendar and pulls all records from the Detail report. It contains courses that have no students assigned to them grouped by: End Year, District Number, District Name, School Number, School Name, State Classification, Calendar, Schedule Structure Name, Course Number, Course Name, Section Number, Section ID, Course Code, Core Content, Teaching Method, Instructional Setting, Section Special Type, KTSEExchange, Responsive, Person ID, Section Start Date, Section End Date. The report will sort by the following in ascending order: End Year, District Name, School Name, Calendar Name, Schedule Structure Name, Course Number, Section Number.

Classes (Aggregate) Report Layout

Data Element	Requirement/Rules	Path	Format
Date Time Generated	Date and time the extract was generated.	N/A	MM/DD/YYYY HH:MM

Data Element	Requirement/Rules	Path	Format
EndYear	Reports the end year for a reported school session.	System Administration > Calendar > School Year > End Year	XXXX 4-digit number (e.g. 2022 for SY 21-22)
District Number	Reports the unique number or alphanumeric code assigned to the reporting district.	System Administration > Resources > District Information > District > State District Number	XXX 3-digit number
District Name	Reports the name of the reporting district.	System Administration > Resources > District Information > District > Name	Text
School Number	Reports the unique number or alphanumeric code assigned to the reporting school.	System Administration > Resources > School > Select School > Location Number	XXX 3-digit number
School Name	Reports the name of the reporting school.	System Administration > Resources > School > Select School > Name	Text
State Classification	Reports the state assigned school classification. See Appendix A for possible values.	System Administration > Resources > School > Select School > State Classification	Code (e.g. A1)
Calendar Name	Reports the name of the calendar.	System Administration > Calendar > Calendar > Name	Text
Schedule Structure Name	Reports the calendar's schedule structure name.	System Administration > Calendar > Schedule Structure > Schedule Structure Detail > Name	Text
Course Number	Reports the local course number.	Search > Course/Section > Course > Number	Text
Course Name	Reports the course name.	Search > Course/Section > Course > Name	Text
Section Number	Reports the section number for the course.	Search > Course/Section > Section > Number	Integer

Data Element	Requirement/Rules	Path	Format
SectionID	Reports the ID for a reported school session.	Search > Course/Section > Section > SectionID	Integer
State Course Code	Reports the state's course code.	Search > Course/Section > Course > State Code	XXXXXX Char(6)
Core Content	Reports section level content indicator.	Search > Course/Section > Section > Core Content	Code (e.g. 100)
Teaching Method	Reports the course's teaching method. Possible values are: <ul style="list-style-type: none"> • 01: Direct Instruction • 02: 3rd Party Contract • 10: Digital Learning Provider • 11: Dual Credit - District Offered • 12: Dual Credit - College Offered • 13: Credit Recovery - Direct Instruction • 14: Credit Recovery - Digital Learning Provider • 19: District Provided Self Study 	Search > Course/Section > Course > Teaching Method	Code (e.g. 01)

Data Element	Requirement/Rules	Path	Format
Instructional Setting	<p>Reports the course's instructional setting.</p> <p>Possible values are:</p> <ul style="list-style-type: none"> • 01: Onsite Classroom • 02: Offsite CTE • 03: Offsite College • 04: Home/Hospital • 05: Online • 06: Blended Learning • 11: Spanish Immersion • 12: French Immersion <p>Instructional Setting is determined by the value set on the section in the Instructional Setting (Override) field.</p> <p>If Instructional Setting (Override) is NULL, Instructional Setting is determined by the value for Instructional Setting on the course.</p>	<p>Scheduling > Courses > Course > Section > Instructional Setting (Override)</p> <p>IF NULL: Scheduling > Courses > Course > Instructional Setting</p>	<p>Code (e.g. 01)</p>
Section Special Type	<p>Reports the section's special classroom type.</p> <p>Possible values are:</p> <ul style="list-style-type: none"> • 01: None • 02: Alternative Classroom • 03: ESL Classroom • 04: Gifted Classroom • 05: Special Education Classroom • 06: Speech Therapy 	<p>Search > Course/Section > Section > Special Type</p>	<p>Code (e.g. 01)</p>
KTS Exchange	<p>Reports the legacyKeyKTS field for the course.</p> <p>Possible values are:</p> <ul style="list-style-type: none"> • Has Value = 1 • NULL = 0 	<p>courseMaster.legacyKeyKTS is not null for the corresponding course</p> <p>Course and CourseMaster left join on courseMasterID</p> <p>DB field = legacyKeyKTS</p>	<p>1 or 0</p>

Data Element	Requirement/Rules	Path	Format
Responsive	Reports the course's Responsive checkbox value. Possible values are: <ul style="list-style-type: none"> • Checkbox checked = 1 • Checkbox unchecked = 0 	Search > Course/Section > Course > Responsive	1 or 0
Primary Teacher PersonID	Reports the active / most recent primary teacher's personID for the section. If there is a current active primary teacher for the section, use the active primary teacher's personID If there is no currently active primary teacher for the section, but there was a previous primary teacher, use the most recent primary teacher's personID If there are no recorded primary teachers for the section, return NULL.	Census > People > Demographics > PersonID	Integer
Primary Teacher First Name	Reports the primary teacher's preferred first name. If there is a Primary Teacher PersonID for the section, report this person's preferred first name. If 0 for the section, return NULL.	Census > People > Demographics > Identities > First Name	Text

Data Element	Requirement/Rules	Path	Format
Primary Teacher Last Name	<p>Reports the primary teacher's preferred last name.</p> <p>If there is a Primary Teacher PersonID for the section, report this person's preferred last name. If 0 for the section, return NULL.</p>	Census > People > Demographics > Identities > Last Name	Text
Low Grade	<p>Reports the lowest grade level of enrollment for the section identified on each record.</p> <p>Possible values are grade levels 95 through 20. Report the lowest grade level of enrollment for the section.</p> <p>If there are no active students (Grades are NULL), report the lowest defined state grade level for the selected calendar's schedule structure where excludeEnrollment = 0.</p>	Search > Course/Section > Section > Roster	Code (e.g. 00)

Data Element	Requirement/Rules	Path	Format
High Grade	<p>Reports the highest grade level of enrollment for the section identified on each record.</p> <p>Possible values are grade levels 95 through 20. Report the highest grade level of enrollment for the section.</p> <p>If there are no active students (Grades are NULL), report the highest defined state grade level for the selected calendar's schedule structure where excludeEnrollment = 0.</p>	Search > Course/Section > Section > Roster	Code (e.g. 08)
Total Count	<p>Reports the count of distinct students on the roster.</p> <p>Count of distinct StateIDs in the roster for the section.</p>	Search > Course/Section > Section > Roster	Integer
General Count	<p>Reports the count of all students on the roster without a disability and who are not English Learners nor Gifted and Talented.</p> <p>Count of distinct StateIDs in the roster for the section where:</p> <ul style="list-style-type: none"> • Primary Disability Section is NULL • EL is NULL or 0 • Gifted is NULL or 0 	<p>Roster: Search > Course/Section > Section > Roster</p> <p>Primary IDEA: Student Information > Special Ed > General > Documents > KY IEP > Enrollment Status > Primary Disability</p> <p>EL: Student Information > Program Participation > English Learners (EL) > Program Status</p> <p>Gifted: Student Information > Program Participation > Gifted & Talented > KY Gifted & Talented Editor > Gifted Category or Gifted Declined Services</p>	Integer

Data Element	Requirement/Rules	Path	Format
SPED 13: Autism Count	<p>Count of students on the roster with primary disability of 13: Autism.</p> <p>Count of distinct StateIDs in the roster for the section where Primary Disability Section = 13.</p>	Primary IDEA: Student Information > Special Ed > General > Documents > KY IEP > Enrollment Status > Primary Disability	Integer
SPED 11: Deaf Blind Count	<p>Count of students on the roster with primary disability of 11: Deaf Blind.</p> <p>Count of distinct StateIDs in the roster for the section where Primary Disability Section = 11.</p>	Primary IDEA: Student Information > Special Ed > General > Documents > KY IEP > Enrollment Status > Primary Disability	Integer
SPED 15: Developmentally Delayed Count	<p>Count of students on the roster with primary disability of 15: Developmentally Delayed.</p> <p>Count of distinct StateIDs in the roster for the section where Primary Disability Section = 15.</p>	Primary IDEA: Student Information > Special Ed > General > Documents > KY IEP > Enrollment Status > Primary Disability	Integer
SPED 07: Emotional Behavior Disability Count	<p>Count of students on the roster with primary disability of 07: Emotional Behavior Disability.</p> <p>Count of distinct StateIDs in the roster for the section where Primary Disability Section = 07.</p>	Primary IDEA: Student Information > Special Ed > General > Documents > KY IEP > Enrollment Status > Primary Disability	Integer
SPED 02: Functional Mental Disability Count	<p>Count of students on the roster with primary disability of 02: Functional Mental Disability.</p> <p>Count of distinct StateIDs in the roster for the section where Primary Disability Section = 02.</p>	Primary IDEA: Student Information > Special Ed > General > Documents > KY IEP > Enrollment Status > Primary Disability	Integer

Data Element	Requirement/Rules	Path	Format
SPED 04: Hearing Impaired Count	<p>Count of students on the roster with primary disability of 04: Hearing Impaired.</p> <p>Count of distinct StateIDs in the roster for the section where Primary Disability Section = 04.</p>	Primary IDEA: Student Information > Special Ed > General > Documents > KY IEP > Enrollment Status > Primary Disability	Integer
SPED 01: Mild Mental Disability Count	<p>Count of students on the roster with primary disability of 01: Mild Mental Disability.</p> <p>Count of distinct StateIDs in the roster for the section where Primary Disability Section = 01.</p>	Primary IDEA: Student Information > Special Ed > General > Documents > KY IEP > Enrollment Status > Primary Disability	Integer
SPED 12: Multiple Disabilities Count	<p>Count of distinct StateIDs on the roster for the school where Primary Disability Section = 01.</p> <p>Count of distinct StateIDs in the roster for the section where Primary Disability Section = 12.</p>	Primary IDEA: Student Information > Special Ed > General > Documents > KY IEP > Enrollment Status > Primary Disability	Integer
SPED 08: Orthopedically Impaired Count	<p>Count of students on the roster with primary disability of 08: Orthopedic Impairment.</p> <p>Count of distinct StateIDs in the roster for the section where Primary Disability Section = 08.</p>	Primary IDEA: Student Information > Special Ed > General > Documents > KY IEP > Enrollment Status > Primary Disability	Integer

Data Element	Requirement/Rules	Path	Format
SPED 09: Other Health Impaired Count	<p>Count of students on the roster with primary disability of 09: Other Health Impaired.</p> <p>Count of distinct StateIDs in the roster for the section where Primary Disability Section = 09.</p>	Primary IDEA: Student Information > Special Ed > General > Documents > KY IEP > Enrollment Status > Primary Disability	Integer
SPED 10: Specific Learning Disability Count	<p>Count of students on the roster with primary disability of 10: Specific Learning Disability.</p> <p>Count of distinct StateIDs in the roster for the section where Primary Disability Section = 10.</p>	Primary IDEA: Student Information > Special Ed > General > Documents > KY IEP > Enrollment Status > Primary Disability	Integer
SPED 05: Speech Language Count	<p>Count of students on the roster with primary disability of 05: Speech Language.</p> <p>Count of distinct StateIDs in the roster for the section where Primary Disability Section = 05.</p>	Primary IDEA: Student Information > Special Ed > General > Documents > KY IEP > Enrollment Status > Primary Disability	Integer
SPED 14: Traumatic Brain Injury Count	<p>Count of students on the roster with primary disability of 14: Traumatic Brian Injury.</p> <p>Count of distinct StateIDs in the roster for the section where Primary Disability Section = 14.</p>	Primary IDEA: Student Information > Special Ed > General > Documents > KY IEP > Enrollment Status > Primary Disability	Integer

Data Element	Requirement/Rules	Path	Format
SPED 06: Visually Impaired Count	<p>Count of students on the roster with primary disability of 06: Visually Impaired.</p> <p>Count of students in the roster for the section with primary disability of 06: Visually Impaired.</p>	Primary IDEA: Student Information > Special Ed > General > Documents > KY IEP > Enrollment Status > Primary Disability	Integer
English Learner Count	<p>Reports the count of English Learners.</p> <p>Count of distinct StateIDs in the roster for the section where EL = 1.</p>	EL: Student Information > Program Participation > English Learners (EL) > Program Status	Integer
Gifted Count	<p>Reports the count of Gifted/Talented students.</p> <p>Count of distinct StateIDs in the roster for the section where Gifted = 1.</p>	Gifted: Student Information > Program Participation > Gifted & Talented > KY Gifted & Talented Editor > Gifted Category or Gifted Declined Services	Integer
Migrant Count	<p>Reports the count of students designated as migrant.</p> <p>Count of distinct StateIDs in the roster for the section where Migrant = 1.</p>	Student Information > Program Participation > Migrant	Integer
Preschool Count	<p>Reports the count of students in grades 95, 96, 97, 98, and 99.</p> <p>Count of distinct StateIDs in the roster for the section where Grade = 95, 96, 97, 98, or 99.</p>	Search > Course/Section > Section > Roster	Integer
Hospital Attendance Group Home Count	<p>Reports the count of students in Home/Hospital.</p> <p>Count of distinct StateIDs in the roster for the section where Home Hospital = 1.</p>	Student Information > General > Attendance Groups	Integer

Data Element	Requirement/Rules	Path	Format
ILPA Count	<p>Reports the count of students with a locked ILPA.</p> <p>Count of distinct StateIDs in the roster for the section where ILPA = 1.</p>	Student Information > General > ILPA > Documents	Integer
Section Start Date	<p>Reports the month, day, and year on which a section begins.</p>	Search > Course/Section > Section	Integer
Section End Date	<p>Reports the month, day, and year on which a section ends.</p>	Search > Course/Section > Section	Integer
Male Count	<p>Reports the count of male students.</p> <p>Count of distinct StateIDs in the roster for the section where Gender = M.</p>	Search > Course/Section > Section > Roster	Integer
Female Count	<p>Reports the count of female students.</p> <p>Count of distinct StateIDs in the roster for the section where Gender = F.</p>	Search > Course/Section > Section > Roster	Integer
Hispanic or Latino Ethnicity Count	<p>Reports the count of students with a Race Ethnicity of 1: Hispanic or Latino.</p> <p>Count of distinct StateIDs in the roster for the section where State Race/Ethnicity = 1.</p>	Census > People > Demographics > Race/Ethnicity > State Race/Ethnicity	Integer
American Indian or Alaska Native Count	<p>Reports the count of students with a Race Ethnicity of 2: American Indian or Alaska Native.</p> <p>Count of distinct StateIDs in the roster for the section where State Race/Ethnicity = 2.</p>	Census > People > Demographics > Race/Ethnicity > State Race/Ethnicity	Integer

Data Element	Requirement/Rules	Path	Format
Asian Count	<p>Reports the count of students with a Race Ethnicity of 3: Asian.</p> <p>Count of distinct StateIDs in the roster for the section where State Race/Ethnicity = 3.</p>	Census > People > Demographics > Race/Ethnicity > State Race/Ethnicity	Integer
Black or African American Count	<p>Reports the count of students with a Race Ethnicity of 4: Black or African American.</p> <p>Count of distinct StateIDs in the roster for the section where State Race/Ethnicity = 4.</p>	Census > People > Demographics > Race/Ethnicity > State Race/Ethnicity	Integer
Two or More Races Count	<p>Reports the count of students with a Race Ethnicity of 7: Two or More Races.</p> <p>Count of distinct StateIDs in the roster for the section where State Race/Ethnicity = 7.</p>	Census > People > Demographics > Race/Ethnicity > State Race/Ethnicity	Integer
Native Hawaiian or Other Pacific Islander Count	<p>Reports the count of students with a Race Ethnicity of 5: Native Hawaiian or Other Pacific Islander.</p> <p>Count of distinct StateIDs in the roster for the section where State Race/Ethnicity = 5.</p>	Census > People > Demographics > Race/Ethnicity > State Race/Ethnicity	Integer

Data Element	Requirement/Rules	Path	Format
White Count	<p>Reports the count of students with a Race Ethnicity of 6: White.</p> <p>Count of distinct StateIDs in the roster for the section where State Race/Ethnicity = 6.</p>	<p>Census > People > Demographics > Race/Ethnicity > State Race/Ethnicity</p>	<p>Integer</p>
Eco Non-Dis Count	<p>Reports the count of students who are not eligible to participate in the National School Lunch Program.</p> <p>Count of distinct StateIDs in the roster for the section where Economically Disadvantaged = 0.</p>	<p>Roster: Search > Course/Section > Section > Roster</p> <p>FRAM: FRAM > Eligibility > Eligibility Editor > State Eligibility Code</p>	<p>Integer</p>
Eco Dis Count	<p>Reports the count of students who are eligible to participate in the National School Lunch Program.</p> <p>Count of distinct StateIDs in the roster for the section where Economically Disadvantaged = 1.</p>	<p>Roster: Search > Course/Section > Section > Roster</p> <p>FRAM: FRAM > Eligibility > Eligibility Editor > State Eligibility Code</p>	<p>Integer</p>
Homeless Count	<p>Reports the count of students who lack a fixed, regular, and adequate nighttime residence.</p> <p>Count of distinct StateIDs in the roster for the section where Homeless = 1.</p>	<p>Roster: Search > Course/Section > Section > Roster</p> <p>Homeless: Student Information > Program Participation > Homeless</p>	<p>Integer</p>
Foster Care Count	<p>Reports the count of students involved in the Foster Care System.</p> <p>Count of distinct StateIDs in the roster for the section where Foster Care = 1.</p>	<p>Roster: Search > Course/Section > Section > Roster</p> <p>Foster Care: Student Information > Program Participation > Foster Care</p>	<p>Integer</p>

Data Element	Requirement/Rules	Path	Format
Military Connected Count	<p>Reports the count of students with parents/guardians in Active Military Duty.</p> <p>Count of distinct StateIDs in the roster for the section where Military Connected = 1.</p>	<p>Roster: Search > Course/Section > Section > Roster</p> <p>Military: Census > People > Military Connections > Military Connections Editor > Status</p>	Integer
Grade Count	<p>Count of students in grade level (95-99, 00-12, 14, 20)</p> <p>Count of distinct StateIDs in the roster for the section where Grade = (95-99, 00-12, 14, 20)</p>	Search > Course/Section > Section > Roster	Integer

Appendix A: State Classification Values

The possible values for **State Classification** are pulled from the locked dictionary within Campus. The current values in this locked dictionary are:

- A1: Principal or head teacher controlled school
- A2: District operated CTE Center (CTC)
- A3: District operated - special ed school
- A4: District operated-preschool program
- A5: District operated alternative program
- A6: KECSAC funded programs
- A7: Miscellaneous: Home/Hospital, Summer
- A8: District operated full-time enrolled online virtual and remote learning program
- B1: Laboratory/training school operated by college/university
- B2: Dual enrollment postsecondary/college-level course program operated by college/university
- C1: University Operated CTE Center
- C2: State Operated CTE Center (ATC)
- D1: State Dept. of Ed operated (Blind & Deaf)
- F1: Fed. Dependent School (Ft. Knox & Ft. Campbell)
- F2: Federal Job Corps
- F3: Federally funded stand-alone Head Start
- J1: Roman Catholic
- M1: Other religion
- M2: 7th Day Adventist
- R1: Private, non-public schools/programs

- C3: State operated vocational program-college
 - C4: State operated-voc. health occupation school
 - C5: State vocational program
-