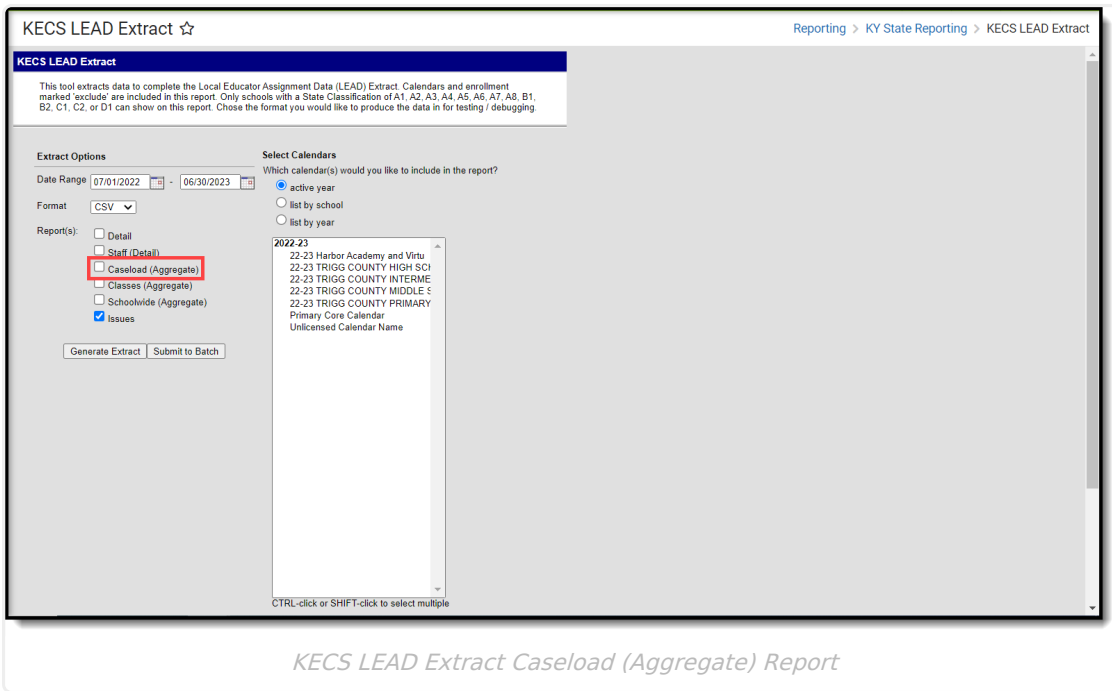


# KECS LEAD Extract Caseload (Aggregate) Report

Last Modified on 10/21/2024 8:22 am CDT

Tool Search: KECS LEAD Extract

[Caseload \(Aggregate\) Logic](#) | [Caseload \(Aggregate\) Elements](#)



## Caseload (Aggregate) Logic

The Caseload (Aggregate) report will generate an aggregated list of information for each case manager grouped by: End Year, District Number, District Name, Case Manager Person ID. The Caseload (Aggregate) report will sort by the following in ascending order: End Year, District Name, Case Manager Person ID.

This report selects records from the Detail report where:

- State ID, Primary Disability Enrollment, and Case Manger PersonID are NOT NULL
- Reporting is done at the district level so students may have enrollments in multiple calendars or schedule structures
- If the Detail report has more than one Enrollment ID for a student within the same school:
  - If multiple enrollments exist with the same Service Type, report the one where the Enrollment End Date is NULL or is the last day of instruction
  - Report the enrollment with Service Type = P
  - If no primary enrollments, report the enrollment with Service Type = S
  - If no partial day enrollments, report the enrollment with Service Type = N
- Case Manager Person ID will be 0 if any active students with a disability do not have an active case manager.

# Caseload (Aggregate) Elements

Data Element	Requirement/Rules	Path	Format
<b>Date Time Generated</b>	Date time the extract was generated.	N/A	MM/DD/YYYY HH:MM
<b>EndYear</b>	Reports the end year for a reported school session.	System Administration > Calendar > School Year > End Year	XXXX 4-digit number (e.g. 2022 for SY 21-22)
<b>District Number</b>	Reports the unique number or alphanumeric code assigned to the reporting district.	System Administration > Resources > District Information > District > State District Number	XXX 3-digit number
<b>District Name</b>	Reports the name of the reporting district.	System Administration > Resources > District Information > District > Name	Text
<b>Case Manager Person ID</b>	Reports the unique Person ID of the student's special education case manager. Students who do not have a case manager should be aggregated on a row where Person ID is reported as 0.	Census > People > Demographics > Person Information > PersonID	Integer
<b>Case Manager First Name</b>	Reports the first name of the student's special education case manager. Students who do not have a case manager should be aggregated on a row where First Name is reported as Blank.	Census > People > Demographics > Person Information > First Name	Text
<b>Case Manager Last Name</b>	Reports the last name of the student's special education case manager. Students who do not have a case manager should be aggregated on a row where Last Name is reported as Blank.	Census > People > Demographics > Person Information > Last Name	Text

Data Element	Requirement/Rules	Path	Format
<b>Low Grade</b>	<p>Reports the lowest grade level of enrollment for the caseload.</p> <p>Possible values are grade levels 95 through 20. Report the lowest grade level of enrollment for the caseload based on the list above.</p>	<p>Search &gt; Course/Section &gt; Section &gt; Roster</p>	<p>Code (e.g. 00)</p>
<b>High Grade</b>	<p>Reports the highest grade level of enrollment for the caseload.</p> <p>Possible values are grade levels 95 through 20. Report the highest grade level of enrollment for the caseload based on the list above.</p>	<p>Search &gt; Course/Section &gt; Section &gt; Roster</p>	<p>Code (e.g. 08)</p>
<b>Total Count</b>	<p>Reports the count of distinct students on the caseload.</p> <p>Count of distinct StateIDs on the caseload.</p>	<p>Search &gt; Course/Section &gt; Section &gt; Roster</p>	<p>Integer</p>

Data Element	Requirement/Rules	Path	Format
<b>General Count</b>	<p>Reports the count of all students on the caseload without a disability and who are not English Learners nor Gifted and Talented.</p> <p>Count of distinct StateIDs on the caseload where:</p> <ul style="list-style-type: none"> <li>• Primary Disability Section is NULL</li> <li>• EL is NULL or 0</li> <li>• Gifted is NULL or 0</li> </ul>	<p>Roster: Search &gt;            Course/Section &gt;            Section &gt;            Roster</p> <p>Primary IDEA: Student Information &gt;            Special Ed &gt;            General &gt;            Documents &gt;            KY IEP &gt;            Enrollment Status &gt;            Primary Disability</p> <p>EL: Student Information &gt;            Program Participation &gt;            English Learners (EL) &gt;            Program Status</p> <p>Gifted: Student Information &gt;            Program Participation &gt;            Gifted &amp; Talented &gt;            KY Gifted &amp; Talented Editor &gt;            Gifted Category or Gifted Declined Services</p>	Integer

Data Element	Requirement/Rules	Path	Format
<b>SPED 13: Autism Count</b>	<p>Count of students on the caseload with primary disability of 13: Autism.</p> <p>Count of distinct StateIDs on the caseload for the section where Primary Disability Section = 13.</p>	Primary IDEA: Student Information > Special Ed > General > Documents > KY IEP > Enrollment Status > Primary Disability	Integer
<b>SPED 11: Deaf Blind Count</b>	<p>Count of students on the caseload with primary disability of 11: Deaf Blind.</p> <p>Count of distinct StateIDs in the roster for the caseload where Primary Disability Section = 11.</p>	Primary IDEA: Student Information > Special Ed > General > Documents > KY IEP > Enrollment Status > Primary Disability	Integer
<b>SPED 15: Developmentally Delayed Count</b>	<p>Count of students on the caseload with primary disability of 15: Developmentally Delayed.</p> <p>Count of distinct StateIDs in the roster for the caseload where Primary Disability Section = 15.</p>	Primary IDEA: Student Information > Special Ed > General > Documents > KY IEP > Enrollment Status > Primary Disability	Integer
<b>SPED 07: Emotional Behavior Disability Count</b>	<p>Count of students on the caseload with primary disability of 07: Emotional Behavior Disability.</p> <p>Count of distinct StateIDs in the caseload for the section where Primary Disability Section = 07.</p>	Primary IDEA: Student Information > Special Ed > General > Documents > KY IEP > Enrollment Status > Primary Disability	Integer

Data Element	Requirement/Rules	Path	Format
<b>SPED 02: Functional Mental Disability Count</b>	<p>Count of students on the caseload with primary disability of 02: Functional Mental Disability.</p> <p>Count of distinct StateIDs in the caseload for the section where Primary Disability Section = 02.</p>	Primary IDEA: Student Information > Special Ed > General > Documents > KY IEP > Enrollment Status > Primary Disability	Integer
<b>SPED 04: Hearing Impaired Count</b>	<p>Count of students on the caseload with primary disability of 04: Hearing Impaired.</p> <p>Count of distinct StateIDs in the caseload for the section where Primary Disability Section = 04.</p>	Primary IDEA: Student Information > Special Ed > General > Documents > KY IEP > Enrollment Status > Primary Disability	Integer
<b>SPED 01: Mild Mental Disability Count</b>	<p>Count of students on the caseload with primary disability of 01: Mild Mental Disability.</p> <p>Count of distinct StateIDs in the caseload for the section where Primary Disability Section = 01.</p>	Primary IDEA: Student Information > Special Ed > General > Documents > KY IEP > Enrollment Status > Primary Disability	Integer
<b>SPED 12: Multiple Disabilities Count</b>	<p>Count of distinct StateIDs on the caseload for the school where Primary Disability Section = 01.</p> <p>Count of distinct StateIDs in the caseload for the section where Primary Disability Section = 12.</p>	Primary IDEA: Student Information > Special Ed > General > Documents > KY IEP > Enrollment Status > Primary Disability	Integer

Data Element	Requirement/Rules	Path	Format
<b>SPED 08: Orthopedically Impaired Count</b>	<p>Count of students on the caseload with primary disability of 08: Orthopedic Impairment.</p> <p>Count of distinct StateIDs in the caseload for the section where Primary Disability Section = 08.</p>	Primary IDEA: Student Information > Special Ed > General > Documents > KY IEP > Enrollment Status > Primary Disability	Integer
<b>SPED 09: Other Health Impaired Count</b>	<p>Count of students on the caseload with primary disability of 09: Other Health Impaired.</p> <p>Count of distinct StateIDs in the caseload for the section where Primary Disability Section = 09.</p>	Primary IDEA: Student Information > Special Ed > General > Documents > KY IEP > Enrollment Status > Primary Disability	Integer
<b>SPED 10: Specific Learning Disability Count</b>	<p>Count of students on the caseload with primary disability of 10: Specific Learning Disability.</p> <p>Count of distinct StateIDs in the caseload for the section where Primary Disability Section = 10.</p>	Primary IDEA: Student Information > Special Ed > General > Documents > KY IEP > Enrollment Status > Primary Disability	Integer
<b>SPED 05: Speech Language Count</b>	<p>Count of students on the caseload with primary disability of 05: Speech Language.</p> <p>Count of distinct StateIDs in the caseload for the section where Primary Disability Section = 05.</p>	Primary IDEA: Student Information > Special Ed > General > Documents > KY IEP > Enrollment Status > Primary Disability	Integer

Data Element	Requirement/Rules	Path	Format
<b>SPED 14: Traumatic Brain Injury Count</b>	<p>Count of students on the caseload with primary disability of 14: Traumatic Brain Injury.</p> <p>Count of distinct StateIDs in the caseload for the section where Primary Disability Section = 14.</p>	Primary IDEA: Student Information > Special Ed > General > Documents > KY IEP > Enrollment Status > Primary Disability	Integer
<b>SPED 06: Visually Impaired Count</b>	<p>Count of students on the caseload with primary disability of 06: Visually Impaired.</p> <p>Count of distinct StateIDs in the caseload for the section where Primary Disability Section = 06.</p>	Primary IDEA: Student Information > Special Ed > General > Documents > KY IEP > Enrollment Status > Primary Disability	Integer
<b>English Learner Count</b>	<p>Reports the count of English Learners.</p> <p>Count of distinct StateIDs in the caseload for the section where EL = 1.</p>	EL: Student Information > Program Participation > English Learners (EL) > Program Status	Integer
<b>Gifted Count</b>	<p>Reports the count of Gifted/Talented students.</p> <p>Count of distinct StateIDs in the caseload for the section where Gifted = 1.</p>	Gifted: Student Information > Program Participation > Gifted & Talented > KY Gifted & Talented Editor > Gifted Category or Gifted Declined Services	Integer



Data Element	Requirement/Rules	Path	Format
<b>Migrant Count</b>	<p>Reports the count of students designated as migrant.</p> <p>Count of distinct StateIDs in the caseload for the section where Migrant = 1.</p>	<p>Student Information &gt; Program Participation &gt; Migrant</p>	Integer
<b>Male Count</b>	<p>Reports the count of male students.</p> <p>Count of distinct StateIDs in the caseload for the section where Gender = M.</p>	<p>Search &gt; Course/Section &gt; Section &gt; Roster</p>	Integer
<b>Female Count</b>	<p>Reports the count of female students.</p> <p>Count of distinct StateIDs in the caseload for the section where Gender = F.</p>	<p>Search &gt; Course/Section &gt; Section &gt; Roster</p>	Integer
<b>Hispanic or Latino Ethnicity Count</b>	<p>Reports the count of students with a Race Ethnicity of 1: Hispanic or Latino.</p> <p>Count of distinct StateIDs in the caseload for the section where State Race/Ethnicity = 1.</p>	<p>Census &gt; People &gt; Demographics &gt; Race/Ethnicity &gt; State Race/Ethnicity</p>	Integer
<b>American Indian or Alaska Native Count</b>	<p>Reports the count of students with a Race Ethnicity of 2: American Indian or Alaska Native.</p> <p>Count of distinct StateIDs in the caseload for the section where State Race/Ethnicity = 2.</p>	<p>Census &gt; People &gt; Demographics &gt; Race/Ethnicity &gt; State Race/Ethnicity</p>	Integer
<b>Asian Count</b>	<p>Reports the count of students with a Race Ethnicity of 3: Asian.</p> <p>Count of distinct StateIDs in the caseload for the section where State Race/Ethnicity = 3.</p>	<p>Census &gt; People &gt; Demographics &gt; Race/Ethnicity &gt; State Race/Ethnicity</p>	Integer

Data Element	Requirement/Rules	Path	Format
<b>Black or African American Count</b>	<p>Reports the count of students with a Race Ethnicity of 4: Black or African American.</p> <p>Count of distinct StateIDs in the caseload for the section where State Race/Ethnicity = 4.</p>	Census > People > Demographics > Race/Ethnicity > State Race/Ethnicity	Integer
<b>Two or More Races Count</b>	<p>Reports the count of students with a Race Ethnicity of 7: Two or More Races.</p> <p>Count of distinct StateIDs in the caseload for the section where State Race/Ethnicity = 7.</p>	Census > People > Demographics > Race/Ethnicity > State Race/Ethnicity	Integer
<b>Native Hawaiian or Other Pacific Islander Count</b>	<p>Reports the count of students with a Race Ethnicity of 5: Native Hawaiian or Other Pacific Islander.</p> <p>Count of distinct StateIDs in the caseload for the section where State Race/Ethnicity = 5.</p>	Census > People > Demographics > Race/Ethnicity > State Race/Ethnicity	Integer
<b>White Count</b>	<p>Reports the count of students with a Race Ethnicity of 6: White.</p> <p>Count of distinct StateIDs in the caseload for the section where State Race/Ethnicity = 6.</p>	Census > People > Demographics > Race/Ethnicity > State Race/Ethnicity	Integer
<b>Eco Non-Dis Count</b>	<p>Reports the count of students who are not eligible to participate in the National School Lunch Program.</p> <p>Count of distinct StateIDs in the caseload for the section where Economically Disadvantaged = 0.</p>	Roster: Search > Course/Section > Section > Roster  FRAM: FRAM > Eligibility > Eligibility Editor > State Eligibility Code	Integer

Data Element	Requirement/Rules	Path	Format
<b>Eco Dis Count</b>	<p>Reports the count of students who are eligible to participate in the National School Lunch Program.</p> <p>Count of distinct StateIDs in the caseload for the section where Economically Disadvantaged = 1.</p>	<p>Roster: Search &gt; Course/Section &gt; Section &gt; Roster</p> <p>FRAM: FRAM &gt; Eligibility &gt; Eligibility Editor &gt; State Eligibility Code</p>	Integer
<b>Homeless Count</b>	<p>Reports the count of students who lack a fixed, regular, and adequate nighttime residence.</p> <p>Count of distinct StateIDs in the caseload for the section where Homeless = 1.</p>	<p>Roster: Search &gt; Course/Section &gt; Section &gt; Roster</p> <p>Homeless: Student Information &gt; Program Participation &gt; Homeless</p>	Integer
<b>Foster Care Count</b>	<p>Reports the count of students involved in the Foster Care System.</p> <p>Count of distinct StateIDs in the caseload for the section where Foster Care = 1.</p>	<p>Roster: Search &gt; Course/Section &gt; Section &gt; Roster</p> <p>Foster Care: Student Information &gt; Program Participation &gt; Foster Care</p>	Integer

Data Element	Requirement/Rules	Path	Format
<b>Military Connected Count</b>	<p>Reports the count of students with parents/guardians in Active Military Duty.</p> <p>Count of distinct StateIDs in the caseload for the section where Military Connected = 1.</p>	<p>Roster: Search &gt; Course/Section &gt; Section &gt; Roster</p> <p>Military: Census &gt; People &gt; Military Connections &gt; Military Connections Editor &gt; Status</p>	Integer
<b>Grade Count</b>	<p>Count of students in grade level (95-99, 00-12, 14, 20)</p> <p>Count of distinct StateIDs in the caseload for the section where Grade = (95-99, 00-12, 14, 20)</p>	<p>Search &gt; Course/Section &gt; Section &gt; Roster</p>	Integer