

Tool Rights (Medicaid) [.2319 and previous]

Last Modified on 05/12/2023 9:35 am CDT

You are viewing a previous version of this article. See [Tool Rights \(Medicaid\)](#) for the most current information.

[Medicaid](#) | [Student Information > Medicaid](#) | [System Administration > Medicaid](#)

Tool Rights determine the level of access users have to tools throughout Campus. This article refers to tool rights in abbreviated form (i.e., R, W, A, D or any combination of the four). Sub-rights appear as *italicized*.

Right	Description
R (Read)	The R right indicates the information on the corresponding tool may be viewed by the user. When applicable, the user is also allowed to print information. The user will NOT have access to the Save, Add or Delete icons in the action bar.
W (Write)	The W right indicates the user may view and modify the information on the corresponding tool. The Save icon in the action bar will be functional. This right allows the user to modify only existing data in the area since adding new data is controlled by the A right. This right includes the ability to change or remove data from a specific field.
A (Add)	The A right indicates the user may view, modify and add to the information on the corresponding tool. The New and Add icons in the action bar will be functional. This right allows the user to add new data/records.
D (Delete)	ASSIGN THIS RIGHT WITH CAUTION. The D right indicates the information on the corresponding tool may be deleted. The Delete icon in the action bar will be functional. This right provides the ability to completely remove an existing record, including all data contained within the record. The ability to change/remove data from a field is controlled through the W right.

RWAD Rights assigned at the module or folder level give those rights to all features within the module. For example, giving RW rights to the System Administration Health folder assigns RW rights to all tools within that folder, including any subrights.

Medicaid

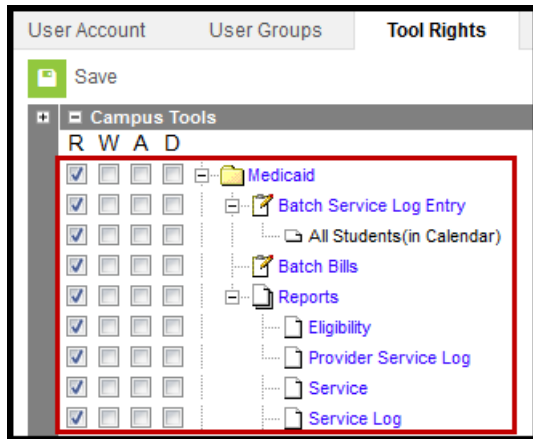


Image 1: Medicaid Tool Rights

Right	R	W	A	D
Batch Service Log Entry	Allows the user to add service log records for selected students.	N/A	N/A	N/A
All Students (in Calendar)	Allows the user the ability to log services for all students in the calendar (not just those in the selected school). Requires All Calendar tool rights.	N/A	N/A	N/A
Batch Bills	N/A	N/A	N/A	N/A
Reports	Allows the user to create and generate Medicaid reports.	N/A	N/A	N/A

Student Information > Medicaid

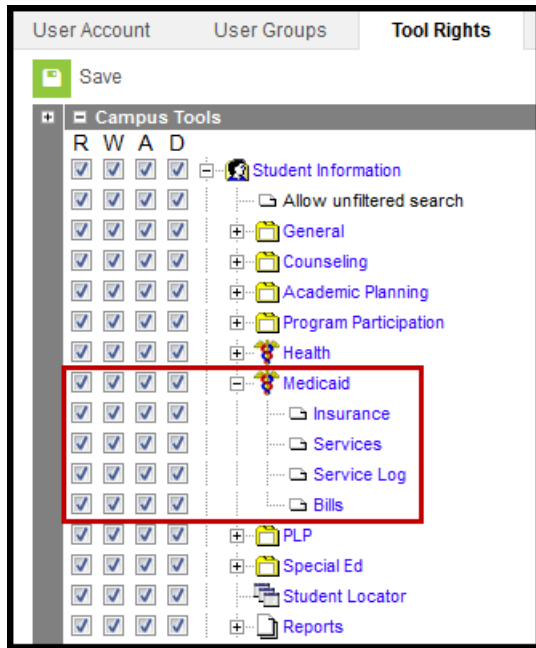


Image 2: Student Information Medicaid Tool Rights

Right	R	W	A	D
Insurance	Allows the user to view existing Insurance records for the student.	Allows the user to edit existing insurance records.	Allows the user to add new insurance records.	Allows the user to delete insurance records for the student.
Services	Allows the user to view existing medicaid service records for the student.	Allows the user to edit existing medicaid service records for the student.	Allows the user to add new service records for the student.	Allows the user to delete service records for the student.
Service Log	Allows the user to view existing medicaid service log records for the student.	Allows the user to edit existing medicaid service logs for the student.	Allows the user to add new medicaid service logs for the student.	Allows the user to delete service log records.
Bills	N/A	N/A	N/A	N/A

System Administration > Medicaid

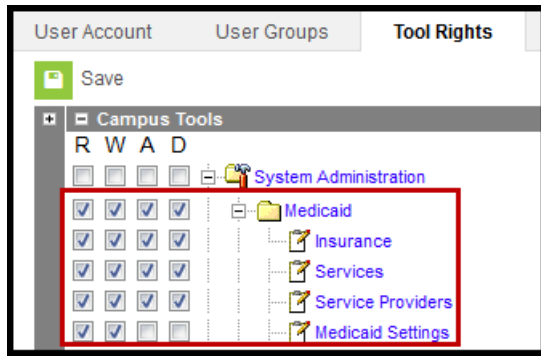


Image 3: System Administration Medicaid Tool Rights

Right	R	W	A	D
Insurance	Allows the user to view existing Medicaid Insurance options.	Allows the user to edit existing Medicaid insurance options.	Allows the user to add new Medicaid insurance options.	Allows the user to permanently remove Medicaid insurance options.
Services	Allows the user to view existing Medicaid services.	Allows the user to edit existing Medicaid services.	Allows the user to add new Medicaid services.	Allows the user to permanently remove Medicaid services.
Service Providers	Allows the user to view existing Medicaid service providers.	Allows the user to edit existing Medicaid service providers.	Allows the user to add new Medicaid service providers.	Allows the user to permanently remove Medicaid service providers.
Medicaid Settings	Allows the user to view existing Medicaid settings.	Allows the user to edit existing Medicaid settings.	N/A	N/A