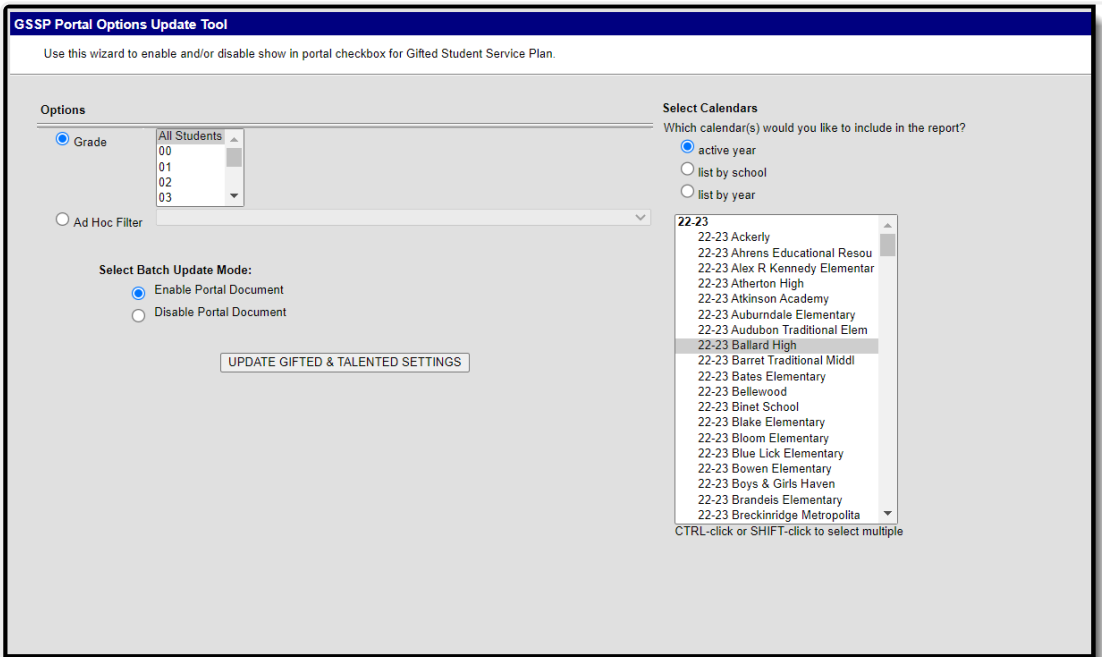


GSSP Portal Options Update Tool (Kentucky)

Last Modified on 03/11/2024 8:47 am CDT

PATH: *System Administration > Portal > GSSP Portal Options Update Tool*

The GSSP Portal Options Update Tool can be used to batch enable and/or disable the **Show in Portal** checkbox for the Gifted Student Service Plan.



GSSP Portal Options Update Tool image

Batch Update Portal Option Settings

1. Select the **Grade(s)** to include or an **Ad hoc Filter**.
2. Choose the **Select Batch Update Mode:**
 - Enable Portal Document
 - Disable Portal Document
3. **Select Calendars** to include in the batch update.
4. Click the **UPDATE GIFTED & TALENTED SETTINGS** button.

The GSSP Portal Setting Report can be used at any time to show the current portal settings.