

# Outline Links [.2211 - .2307]

Last Modified on 03/10/2023 10:54 am CST

You are viewing a previous version of this article. See [Outline Links](#) for the most current information.

## Creating Outline Links | Field Definitions

**PATH:** *System Administration > Custom > Outline Links*

The Outline Links tool allows shortcut links to be added within the Campus Index.

These links can be used to allow staff access to commonly used websites, like the district website or help desk, state Department of Education, reporting interfaces, health tools, etc.

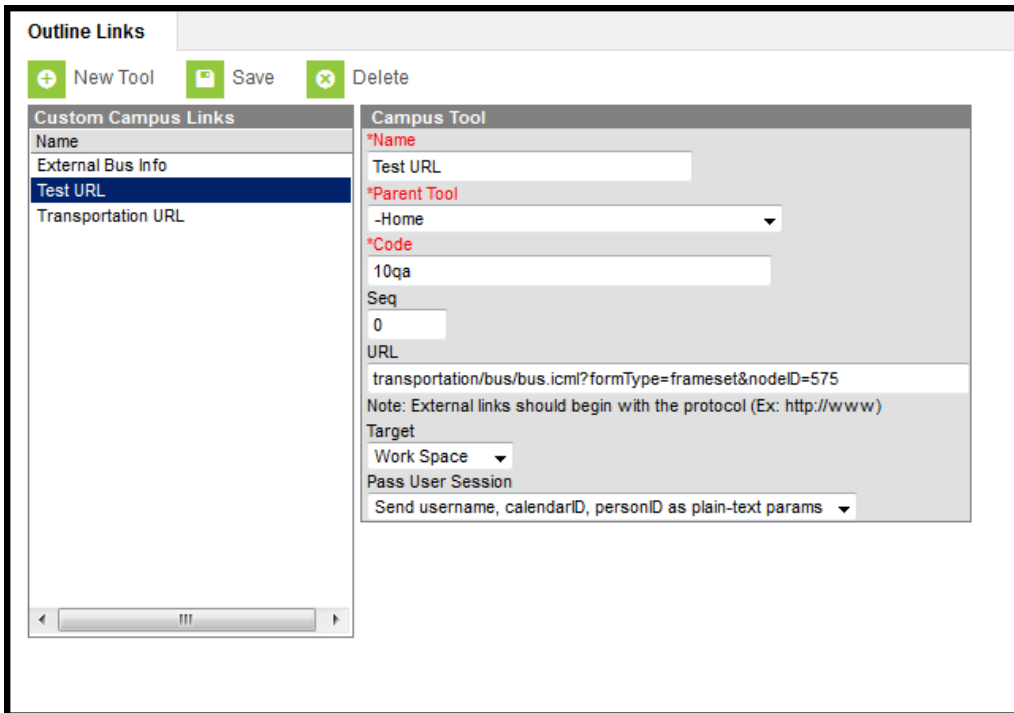


Image 1: Outline Links Tool

## Creating Outline Links

1. Select the **New Tool** icon from the action bar. The Campus Tool editor will display.
2. Enter information in the required **Name**, **Parent Tool**, and **Code** fields.
3. Enter information in the non-required fields, as necessary.
4. Click the **Save** icon to create the link.

The new Outline Link will NOT appear in the Campus Index until the user logs out and back into the Campus system.

Outline shortcut links will appear to all district staff with appropriate user rights to the Parent Tool location.

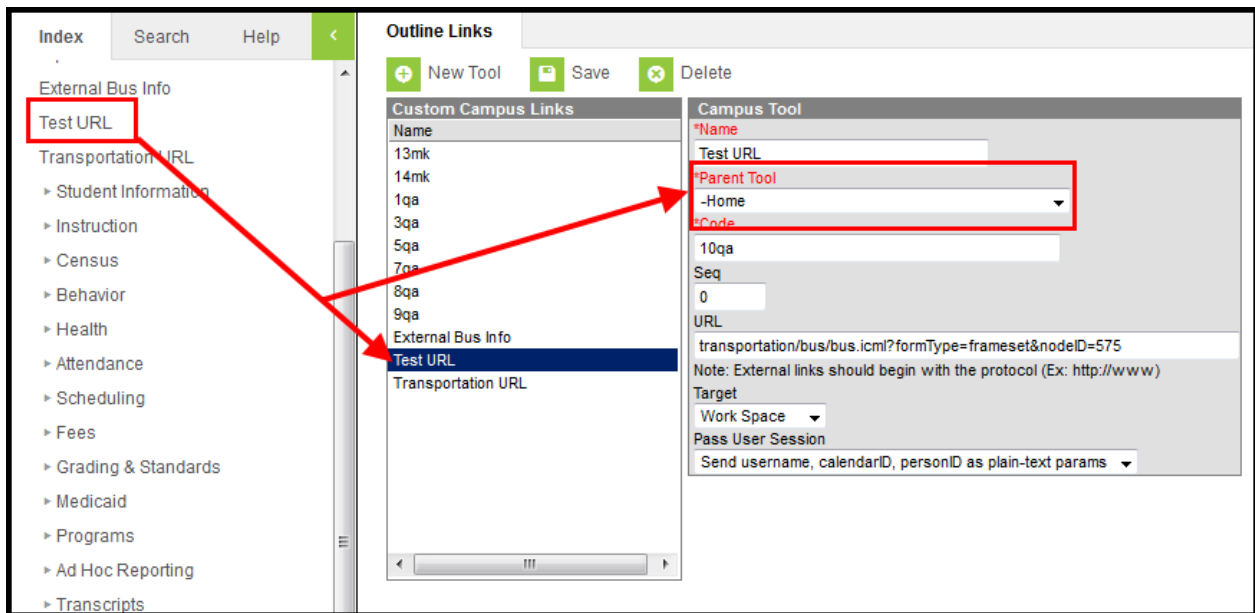


Image 2: Adding Outline Links

## Field Definitions

The fields of the Outline Link tool are defined as follows:

Field	Definition
<b>Name</b>	Name of the link to be displayed in the Index (up to 50 characters).
<b>Parent Tool</b>	The area within the Index where the link should be inserted. This list only displays parent Campus tools associated with the outline that are activated for the district.
<b>Code</b>	The alias/tooltip to appear when the user hovers the mouse over the link in the Index.
<b>Seq</b>	This field is for specifying the location of the Outline Link within the Index, as related to the tool selected from the Parent Tool dropdown list. <i>E.g.,</i> When "Student Information" is selected from the Parent Tool field, the value entered in the Seq(ue)nce field indicates the number of components (tools, folders, etc.) that should precede the Outline Link. A Seq(ue)nce value of 7 will set the Outline Link as the eighth component available in the Index under Student Information.

Field	Definition
<b>URL</b>	<p>The URL of the link's website.</p> <p>A link to an external URL must begin with the protocol (<i>http://www.website.com</i> rather than <i>www.website.com</i>). If an external URL does not begin with the protocol, it is assumed to be an internal link and an error message that the resource is not available will be shown when the link is accessed.</p>
<b>Target</b>	<p>Indicates where the link should open.</p> <ul style="list-style-type: none"> <li>• <b>Work Space</b> should be selected for internal links. An error message will appear if the URL is an external link.</li> <li>• <b>New Window</b> should be selected for external links. This will allow the URL to open in a new tab or window.</li> </ul>
<b>Pass User Session</b>	<p>This field makes it possible for other sites, particularly dedicated to custom reporting, to pass select Campus parameters in a URL.</p> <ul style="list-style-type: none"> <li>• <b>None --</b> This option is for inserting regular links when no Campus user sessions are passed to the link.</li> <li>• <b>Send username, calendarID, personID as plain-text params --</b> Indicates these elements will be used to pass along the user info the link's site.</li> <li>• <b>Encrypt url-encoded username, etc. --</b> Indicates that select user session parameters for a user logged into Campus should be passed to the link's site. These parameters added to the URL include personID, userID, username, calendarID, contextID, contextIDType and timeStamp.</li> </ul>