

Behavior (Oregon)

Last Modified on 06/18/2024 3:18 pm CDT

[Behavior Setup](#) | [Behavior Management](#)

The Behavior module provides tools for monitoring and recording behavior incidents, for creating letters for parents/guardians regarding student's behavior and for generating reports related to behavior.

Behavior Setup

[Event Types](#) | [Resolution Types](#) | [Response Types](#)

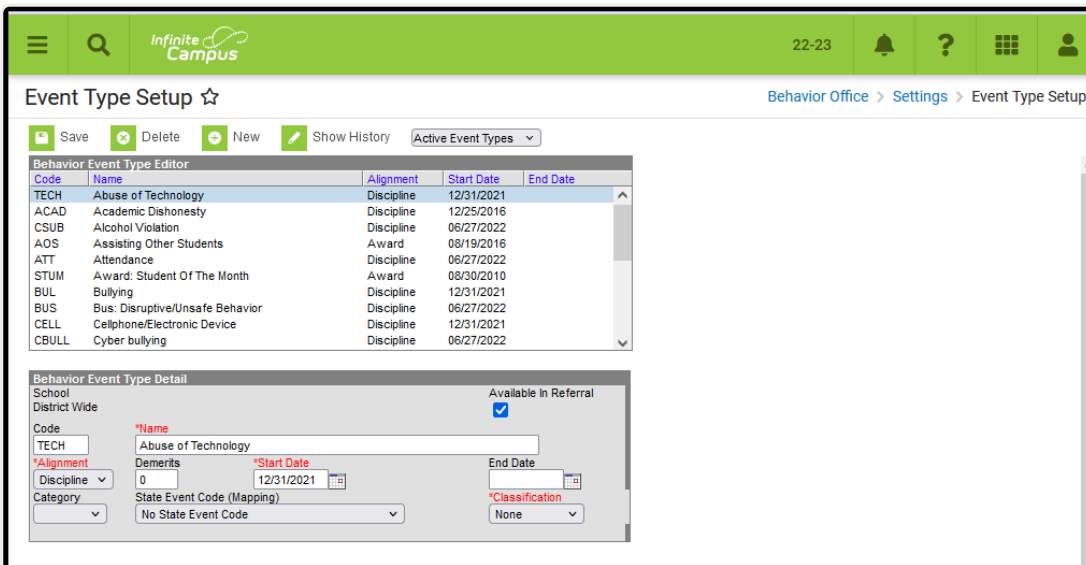
The Behavior Settings tools are used to set up behavior events/incidents, resolutions, and responses. For the most part, these settings apply to the entire district, but there are instances where an event, resolution or response may only apply to a particular school.

See the core [Event Types](#) and [Resolution Types](#) articles for information on creating this information.

Event Types

Tool Search: Event Type Setup

Behavior Event Types organize behavior incidents into categories.



Event Type Setup

State Event Code (Mapping)

State Event Codes indicate the reason a student was subject to a disciplinary action. These are the official state codes to which all district-defined behavior events/incidents should be mapped. Behavior events/incidents that are not mapped to a state event code do NOT report.

▶ [Click here to expand...](#)

Classification of Event Types

When Event Types and Resolution Types have the **Classification** field to a value that is NOT None, additional fields display on the Event and Resolution Detail editors. For example, an Event Type that has a Classification of Weapon displays the Weapon Type and Weapon Description fields.

Event Types can have a Classification of Harassment, Drugs or Weapons. Event types with a State Event Code related to one of these should be marked accordingly.

▶ [Click here to expand...](#)

Resolution Types

Tool Search: Resolution Type Setup

Behavior Resolution Types organize the resolution of an event into categories.

☰
🔍
Infinite Campus

Resolution Type Setup ☆

Save
Delete
New
Show History
Active Resolution Types ▾

Behavior Resolution Type Editor				
Code	Name	Alignment	Start Date	End Date
1	Expulsion	Discipline	08/08/2008	
2	In-School Suspension	Discipline	08/08/2008	
3	Out-of-School Suspension	Discipline	08/08/2008	
5	Removal to an Alternative Educational Se...	Discipline	08/08/2008	
4	Truancy	Discipline	08/08/2008	

Behavior Resolution Type Detail

School
District Wide
Calculate End Date/Duration

Code:

*Name:

*Alignment:

Category:

Allow attendance modification

*Start Date:

End Date:

State Resolution Code (Mapping):

Sub-Type:

Behavior Resolution Types

State Resolution Code (Mapping)

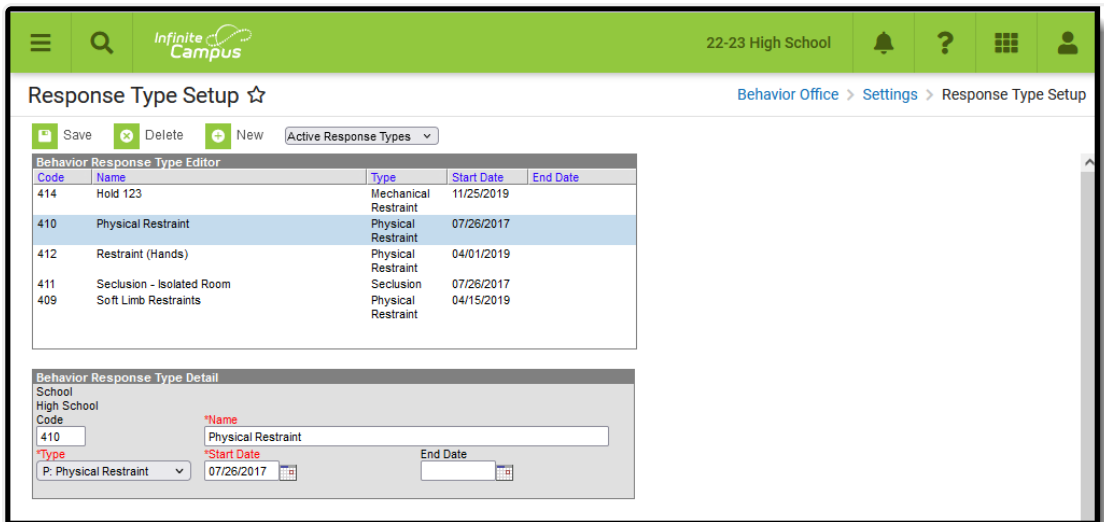
State Resolution Codes (also referred to as **Discipline Action Types**) indicate the type of disciplinary action taken for a student. These are the official state codes to which all district-defined behavior resolutions should be mapped. Behavior resolutions that are not mapped to a state event code do NOT report.

▶ [Click here to expand...](#)

Response Types

Tool Search: Response Type Setup

Response Types are assigned to behavior incidents that require a restraint to be administered by the approved personnel. The fields on this editor are NOT localized; however, Response Types are needed in order to complete the Behavior Response on the Behavior Incident editor.



Behavior Response Types

Response Type Code and Name

Lists the code and name of the response.

▶ [Click here to expand...](#)

Type

Describes the way the restraint or seclusion was performed.

The use of chemical restraint, mechanical restraint or prone restraint on a student in a public education program in the State of Oregon is strictly prohibited.

The use of physical restraint or seclusion on a student in a public education program in the State of Oregon is prohibited unless used in the following manner:

- The student's behavior imposes a reasonable threat of imminent, serious bodily injury to the student or others; and
- Less restrictive interventions would not be effective.

See additional guidance on using restraints on the Oregon Department of Education website.

▶ [Click here to expand...](#)

Behavior Management

[Participant Fields](#) | [Resolution Fields](#)

Tool Search: Behavior Management

The Behavior Management tool is used to record all behavior incidents that occur in a school. Information is separated into Behavior Events, Participants in that event, and Resolutions to that event.

See the core Behavior Management article for information on recording and processing behavior incidents.

Behavior Management ☆

Save Delete New

Status Filter: Submitted/In-Progress Alignment Filter: Discipline/Award

Title	Date/Time	Incident Location	Context	Submitted By	Status	Locked
Theft/Vandalism	09/21/2021 1:41 PM	Restroom	After Class	Staff	IP	
Student, Matthew	09/17/2021 1:35 PM	Classroom	During Class	Staff	SB	
Noncompliant	09/09/2021 11:13 AM	Classroom	During Class	Staff	IP	
Disrespect	09/09/2021 11:07 AM	Classroom	During Class	Staff	IP	
Vape Possession	09/01/2021 3:00 PM	Classroom	During Class	Staff	IP	
phone incident	08/24/2021 3:23 PM	Classroom	During Class	Staff	SB	
Lunch Detention	08/20/2021 2:28 PM	On Campus	During Class	Staff	IP	
Truancy	08/19/2021 1:10 PM	Unknown	Unknown	Staff	IP	
Fight	08/18/2021 3:15 PM	On-Campus, Other Outside Area	After Class	Staff	IP	

Incident Detail Information

This section stores information specific to the incident and will be shared on the behavior tab of each participant. Add Event/Participant and Add Resolution buttons will not be enabled until all required fields are filled.

Incident ID: 389288 Status: Submitted Submitted Date: 09/17/2021 02:07 PM Submitted By: Staff

*Alignment: Discipline Title: Student, Matthew

*Date of Incident: 09/17/2021 *Time of Incident: 01:35 PM Damages: \$ 0.00

*Context: DC: During Class Context Description: Refusal to remove hat

*Incident Location: CLA: Classroom Location Description: 1204

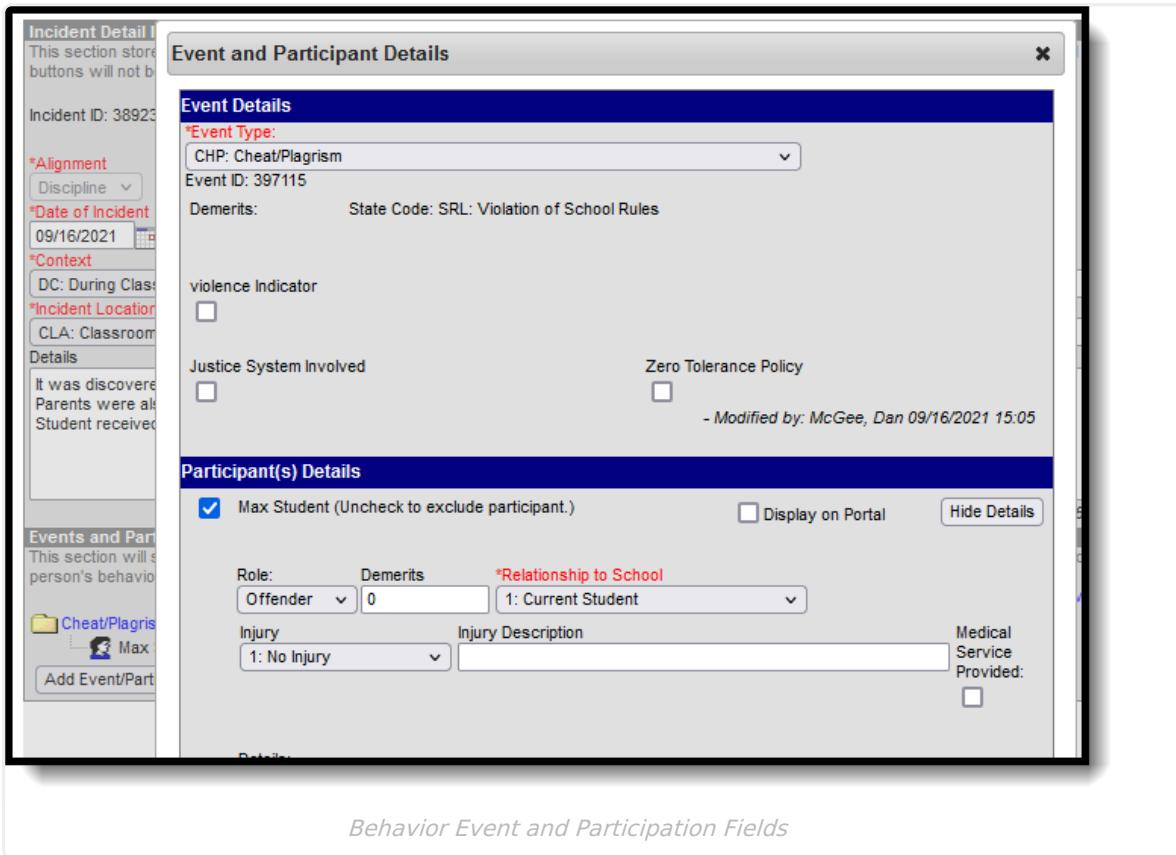
Details: Student came to class today (he's missed many days). When he walked in, he was wearing a hat. I asked him to please remove it. He ignored me. I then walked over to him and asked him to please remove it. He replied that he would "rather not". I told him I was asking him politely a third time, and if he refused I'd need to send an email. He is still wearing his hat.

- Modified by: Staff 09/17/2021 14:07

Behavior Management

Participant Fields

Participants in a Behavior Incident can be offenders or witnesses.



Behavior Event and Participation Fields

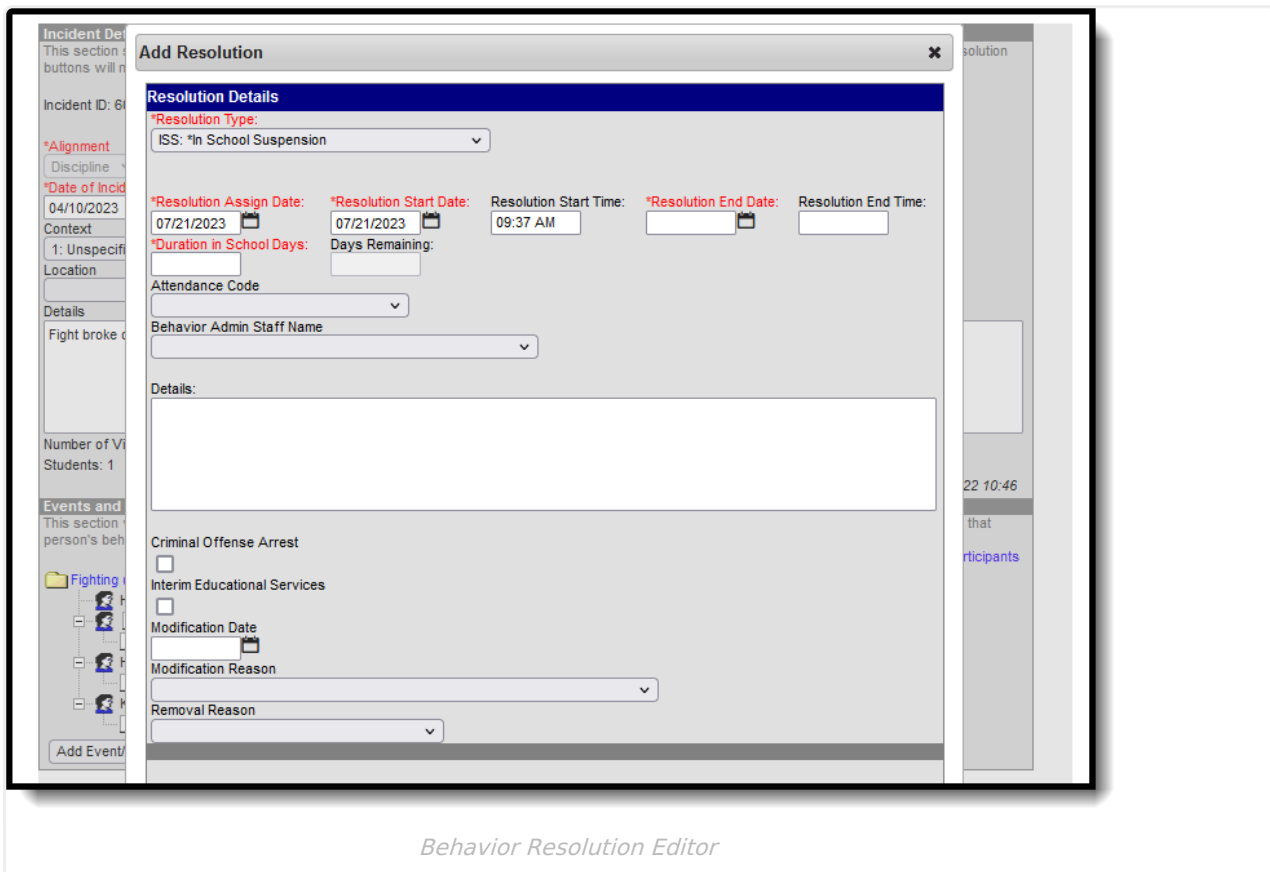
Weapon and Weapon Code

Indicates whether the incident triggering the disciplinary action involved a weapon. **The event association with the resolution must have a Classification of Weapon in order to display and assign a Weapon to a participant on the Event Type Setup.**

▶ [Click here to expand...](#)

Resolution Fields

Behavior Management Resolution fields provide information on the consequence of the behavior incident.



Behavior Resolution Editor

Criminal Offense Arrest

Indicates the incident resulted in the student's arrest for a violent criminal offense. Incidents included in this definition are as follows:

- Assault
- Manufacture of delivery of a controlled substance
- Sexual crimes using force, threatened use of force or against an incapacitated person
- Arson
- Robbery
- Hate/Bias Crime
- Coercion
- Kidnapping

▶ [Click here to expand...](#)

Interim Educational Services

Indicates the district provided interim educational services to the student during the discipline days to enable the student to continue to participate in the general education curriculum and/or to progress toward meeting the goals set out in the student's IEP.

▶ [Click here to expand...](#)

Modification Date

Reports the date the resolution was modified.

▶ [Click here to expand...](#)

Modification Reason

Describes special circumstances that may have modified the disciplinary action/resolution.

▶ [Click here to expand...](#)

Removal Reason

Indicates the reason the student was removed.

▶ [Click here to expand...](#)

Behavior Response Fields

Behavior Response fields provide details on the activity surrounding the restraint and seclusion of a student when the behavior incident required that response.

Incident Detail
This section stores buttons will not b

Incident ID: 605

*Alignment
Discipline

*Date of Incident
04/10/2023

Context
1: Unspecified

Location

Details
Fight broke out o

Number of Victim
Students: 1

Events and Par
This section will s
person's behavio

Fighting (Eve
Henr
Harle
Kurt

Add Event/Part

Add Response ✕

Response Details

*Response Type
410: Physical Restraint Complete

Response Date: 04/10/2023 *Response Start Time: 10:15 AM *Response End Time: 10:25 AM Duration: 10 mins

*Behavior Response Approver
Administrator, Demo

Pre-Response Actions: (Describe the actions of the student and employees involved before the response along with any alternatives to the response attempted.)

Response Details: (Provide a description of the response utilized along with the actions of the student and school personnel.)

Post-Response Actions: (Describe observed student and school employee behaviors following the response along with any deescalation techniques.)

Room:

Seclusion Room Locked

Seclusion Room State Standards Met

Steps Taken State Code(s): (Indicate the steps taken to decrease the use of restraint and seclusion for students restrained or secluded more than 10 times during the school year.)

Select Values

Steps Taken Comment: (Explain any additional or 'Other' steps taken.)

Restraint/Seclusion - Staff Result Untrained Staff

Resolution

4/2022 10:46

d on that

y Participants

Behavior Response Details

Seclusion Room Locked

Indicates the seclusion occurred in a locked room.

▶ [Click here to expand...](#)

Seclusion Room State Standards Met

When marked, indicates the seclusion room meets all standards for seclusion.

▶ [Click here to expand...](#)

Steps Taken State Code

Selection indicates the steps taken to decrease the use of the restraint and seclusion for students

restrained or secluded more than 10 times during the school year.

▶ [Click here to expand...](#)

Steps Taken Comment

Provides information on the steps that were taken to restrain and/or seclude the student during the behavior incident. Allows up to 500 characters.

▶ [Click here to expand...](#)

Student was Injured During Response

When marked, indicates the use of the restraint or seclusion resulted in the injury of a student.

▶ [Click here to expand...](#)

Student Died during Response

When marked, indicates the use of the restraint or seclusion resulted in the death of a student.

▶ [Click here to expand...](#)

Restraint/Seclusion - Staff Result

Indicates the use of restraint or seclusion resulted in the death or injury of a staff member.

▶ [Click here to expand...](#)

Untrained Staff

Indicates that at least one staff member administering the restraint or seclusion during this incident was not trained.

▶ [Click here to expand...](#)
