

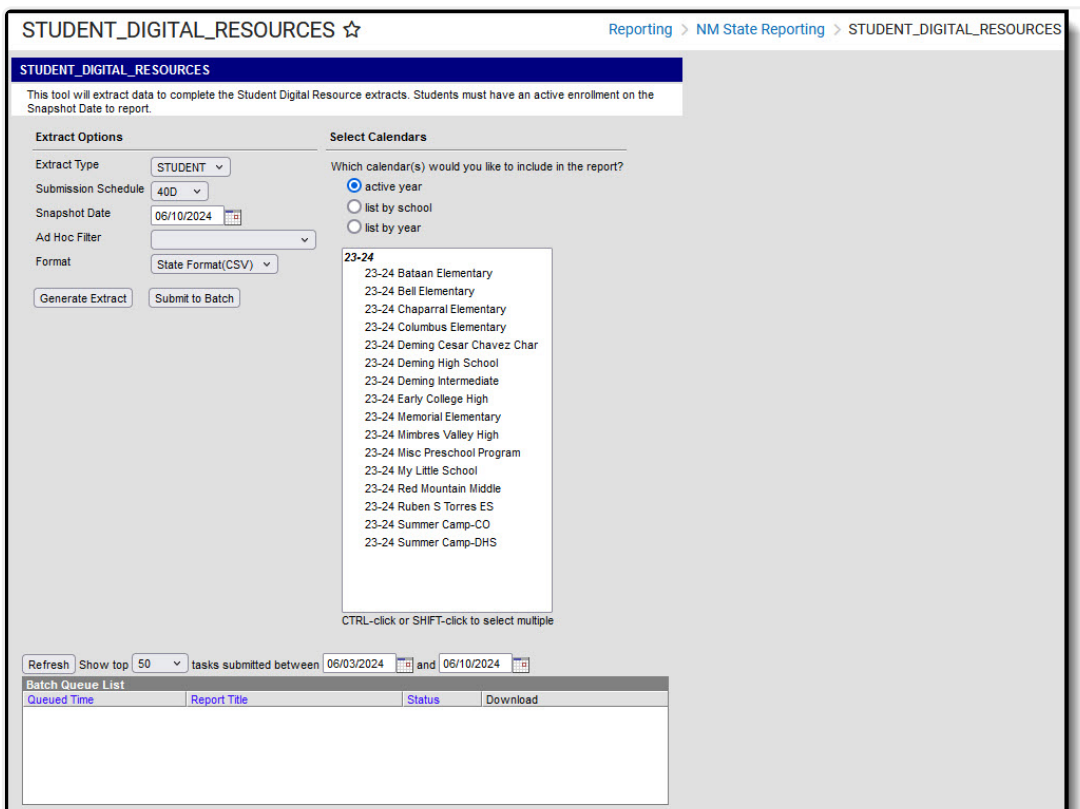
Student Digital Resources Template (New Mexico)

Last Modified on 06/10/2024 7:50 am CDT

[Extract Logic](#) | [Extract Editor](#) | [Report Layout](#)

Tool Search: Student Digital Resources Template

This tool will extract data to complete the Student Digital Resource extracts. Students must have an active enrollment on the Snapshot Date to report.



Student Digital Resources Editor.

Extract Logic

▶ [Click here to expand...](#)

Extract Editor

Field	Description
Extract Type	A dropdown list of available extracts. Extracts include: <ul style="list-style-type: none"> • Student

Field	Description
Submission Schedule	A dropdown list of submission schedules and include: <ul style="list-style-type: none"> • 40D • 80D • 120D • EOY (End of Year)
Snapshot Date	Defaults to the current date.
Ad Hoc Filter	Ad Hoc Filters allow you to limit report results to those included in the filter. This option is useful for troubleshooting.
File Format	The format in which the report will generate. <ul style="list-style-type: none"> • State Format (CSV) • HTML
Calendar Selector	The calendar(s) from which data is pulled for the report.
Generate Extract/Batch Queue	The report can be marked to generate immediately using the Generate Extract button or can be marked to generate at a later time using the Submit to Batch button. See the Batch Queue article for additional guidance.

Report Layout

#	Element	Logic	Location
Student 1	District Code	A three character district code.	District Information > State District Number Database: District.number

#	Element	Logic	Location
Student 2	Location Code	<p>If Student Information > Special Education > General > NM Exceptionality (State Reporting) Data Entry Plan is active on the Snapshot Date AND Location = 998, report as 998.</p> <ul style="list-style-type: none"> • Otherwise, State School Number from the reporting enrollment of record reports. 	<p>Special Education > General > NM Exceptionality (State Reporting) Data Entry Plan</p> <ul style="list-style-type: none"> • Participation Start Date • Participation End Date • Location Code <p>Database:</p> <ul style="list-style-type: none"> • nmExceptionalityPlan.participationStartDate • nmExceptionalityPlan.participationEndDate • nmExceptionalityPlan.locationCode
Student 3	School Year Date	<p>Reports the end year value based on the Year selected in the Campus Toolbar</p> <ul style="list-style-type: none"> • <i>(pulls from a SQL table populated on the back-end when each calendar is first created)</i> <ul style="list-style-type: none"> ◦ Report as YYYY-06-30 all records, where YYYY is the year value based on Calendar > End Date 	<p>Calendar Information > End Date</p> <p>Database: Calendar.endDate</p>

#	Element	Logic	Location
Student 4	Student ID	Reports the state-assigned identifier for the student.	Demographics > Student State ID Database: Person.stateID
Student 5	Reporting Date	Report year value based on reporting school year and value selected in the Submission Schedule on the extract editor: <ul style="list-style-type: none"> • IF 40D, year plus hard coded 10-01 reports • IF 80D, year plus hard coded 12-15 reports • IF 120D, year plus hard coded 03-01 reports • IF EOY, year plus hard coded 06-01 reports 	Calendar > School Years
Student 6	Primary Learning Device Type Code	Reports the Primary Digital Device code from the latest Digital Equity record that is active as of the Snapshot Date. Otherwise, reports blank.	Digital Equity > Primary Digital Device

#	Element	Logic	Location
Student 7	School Provided Device Indicator	<p>Reports the Primary Learning Device Provider code from the latest Digital Equity record that is active as of the Snapshot Date</p> <p>Otherwise, reports blank.</p>	Digital Equity > Primary Learning Device Provider
Student 8	Filler8	N/A	N/A
Student 9	Primary Learning Device Access Code	<p>Reports the Primary Device Access code from the latest Digital Equity record that is active as of the Snapshot Date</p> <p>Otherwise, reports blank.</p>	Digital Equity > Primary Device Access
Student 10	Filler10	N/A	N/A
Student 11	Internet Access In Residence Indicator	<p>Reports the Internet Access In Residence code from the latest Digital Equity record that is active as of the Snapshot Date</p> <p>Otherwise, reports blank.</p>	Digital Equity > Internet Access In Residence
Student 12	Filler12	N/A	N/A

#	Element	Logic	Location
Student 13	Internet Access Type Code	<p>Reports the Primary Internet Access Type In Res code from the latest Digital Equity record that is active as of the Snapshot Date</p> <p>Otherwise, reports blank.</p>	Digital Equity > Primary Internet Access Type In Res
Student 14	Internet Performance Code	<p>Reports the Internet Performance code from the latest Digital Equity record that is active as of the Snapshot Date</p> <p>Otherwise, reports blank.</p>	Digital Equity > Internet Performance
Student 15	Filler15	N/A	N/A