

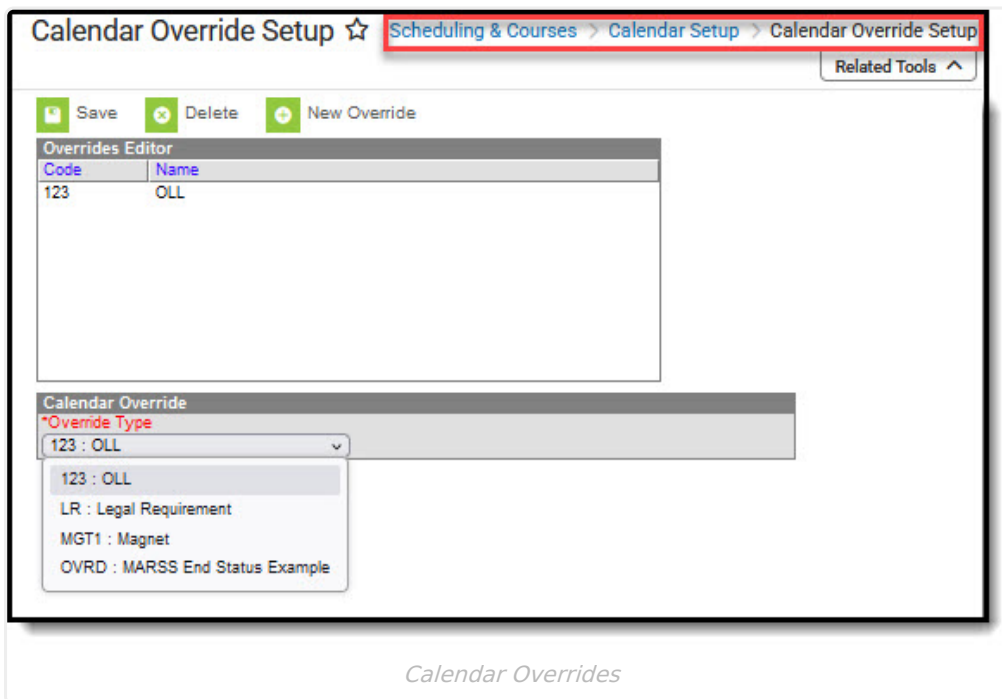
# Calendar Override Setup

Last Modified on 02/03/2025 3:09 pm CST

Tool Search: Calendar Override Setup

Calendar overrides apply to the programs a school offers to students. Overrides may be set for a person or on a household address. Person overrides take precedence over the household address override. A student may be denied enrollment to a school if the student does not live at an address within the school boundary. In this case, the student would need to obtain a person override to attend the school based on a specific curriculum program or administrative decision.

Overrides are created in the [Resources Override Type](#) tool.



## Add Calendar Overrides

1. Select the **New Override** icon. The **Calendar Override** editor displays.
2. Select the **Override Type** from the dropdown list.
3. Click the **Save** icon.

Repeat this process until all of the appropriate override types are listed for the selected calendar.

## Next Steps

See the [School Choice Workflow](#) for a complete list of steps for Campus School Choice.

- Add [Address](#) and [Person Overrides](#).

- Roll school calendars forward.
  - Mark calendars for School Choice and Require Student Assignment.
-