

IR (IREAD-3 Exemption Report) (Indiana)

Last Modified on 07/11/2024 1:54 pm CDT

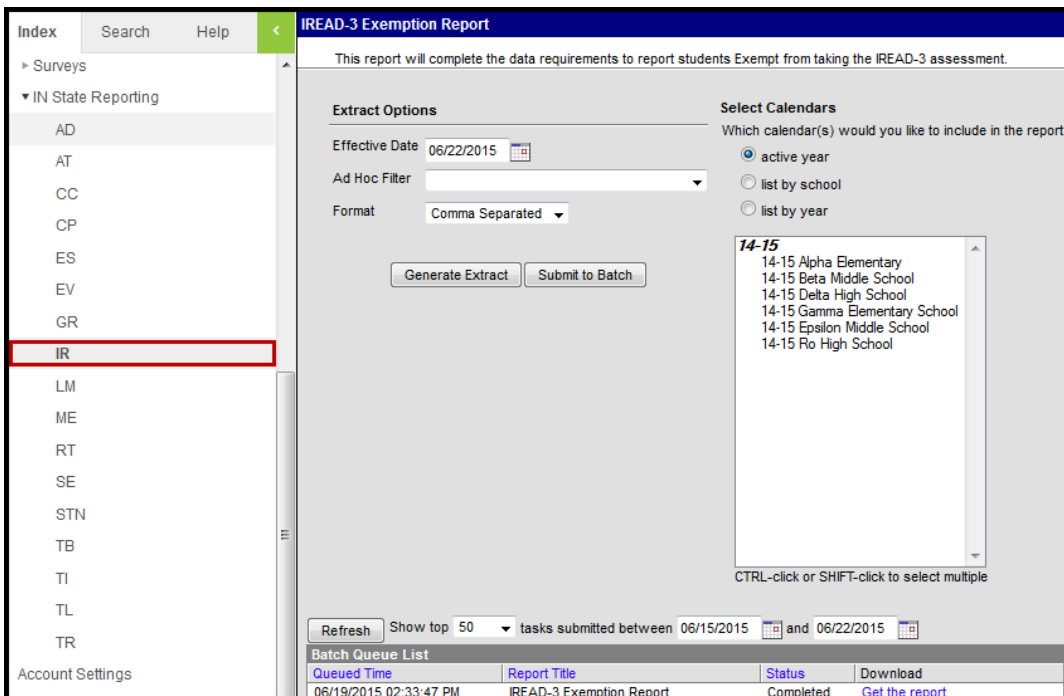
This report is no longer supported or updated by Infinite Campus. The flat file reports will remain available in the Infinite Campus system until the 2023-2024 school year. Schools can continue to use the flat file reports as needed until then, but Infinite Campus no longer provides any support.

[Data Exchange](#) was designated as the sole source of truth for all data for the purposes of required reports beginning with the 2021-2022 school year. Please refer to the [Indiana Ed-Fi documentation](#) for additional information about current state reporting practices / procedures using the Data Exchange Ed-Fi System.

[Report Logic](#) | [Generating the Report](#) | [Report Layout](#)

PATH: [IN State Reporting](#) > [IR](#)

The Indiana Reading Evaluation And Determination (IREAD-3) Assessment is a summative assessment that evaluates the reading skills for students who are in grade three. The IREAD-3 Exemption Report collects data on students *exempted* from IREAD-3.



IR (IREAD-3 Exemption Report) Editor

Report Logic

Reports all students with at least one of the IREAD-3 Exemptions marked on their enrollment record. A maximum of one record reports per school and calendar. If multiple enrollments in the same school and calendar meet the criteria to report, the qualifying exemptions from all enrollments report in a single record. Excludes enrollments marked as State Exclude or No show.

Generating the Report

1. Enter the **Effective Date** in *MMDDYYYY* format or by clicking on the calendar icon.
2. If desired, select an **Ad Hoc Filter** from the dropdown.
3. Select the **Format** from the dropdown. Available formats are Comma Separated, HTML, and CSV.
4. Select the **Calendar(s)** to include in the report.
5. Click **Generate the Extract** or **Submit to Batch** to send the report to the Batch Queue.

Users can submit the report request to the batch queue by clicking **Submit to Batch** instead of **Generate Extract**. This process allows larger reports to generate in the background, without disrupting the use of Campus. For more information about submitting a report to the batch queue, see the [Batch Queue](#) article.

	A	B	C	D	E	F	G	H
1	SchoolNum	StudentTestNu	ELExempt	IEPEmp	RetainedE	OutOfState	ExemptionStatus	
2	5198	123456789	N	N	Y	N		
3	5198	234567890	N	N	N	Y		
4	5198	345678901	Y	Y	N	N		

IR (IREAD-3 Exemption Report) - Comma Separated Example

IRead 3 Exemption Records: Records:3							
SchoolNumber	StudentTestNumber	FirstName	LastName	ELExemptionStatus	IEPEmpStatus	RetainedExemptionStatus	OutOfStateExemptionStatus
5198	123456789	Christopher	Student	N	N	Y	N
5198	234567890	Chase	Student	N	N	N	Y
5198	345678901	Brayden	Student	Y	Y	N	N

IR (IREAD-3 Exemption Report) - HTML Example

```
<?xml version="1.0" encoding="UTF-8"?>
- <XIF_IRData>
  - <Corporation Id="5310">
    - <School Id="5198">
      <Student AltAssessment="N" Retained="Y" IEP="N" EL="N" STN="123456789"/>
      <Student AltAssessment="Y" Retained="N" IEP="N" EL="N" STN="234567890"/>
      <Student AltAssessment="N" Retained="N" IEP="Y" EL="Y" STN="345678901"/>
    </School>
  </Corporation>
</XIF_IRData>
```

IR (IREAD-3 Exemption Report) - CSV Example

Report Layout

Element	Description	Type, Format and Length	Campus Database	Campus Interface
Corporation ID	The district identification number. This field only reports for the XML Format.	Numeric, 4 digits	District.number	System Administration > Resources > District Information > State District Number
School Number	The state-assigned school number of the school submitting the exemption record. Reports the four-digit IN Serving School code if populated. Otherwise, the state school number for the school the student is enrolled in reports.	Numeric, 4 digits	Enrollments.servingSchool School.number	Student Information > General > Enrollments > IN Serving School; OR System Administration > Resources > School > School Number
Student Test Number (STN)	The official Student Test Number (STN) assigned to the student.	Numeric, 9 digits	Enrollment.stateID	Student Information > General > Enrollments > State ID
First Name	The student's first name. This field only reports for the HTML format.	Alphanumeric	Identity.firstName	Census > People > Identity > First Name

Element	Description	Type, Format and Length	Campus Database	Campus Interface
Last Name	The student's last name. This field only reports for the HTML format.	Alphanumeric	Identity.lastName	Census > People > Identity > Last Name
EL Exception Status	Indicates if the student is receiving an exemption based on the decision of the ILP team.	Alphanumeric, 1 character Y or N	EnrollmentIN.elExemption	Student Information > General > Enrollment > State Reporting Testing > EL Exemption
IEP Exemption Status	Indicates the student is receiving an exemption based on the decision of the Case Conference Committee.	Alphanumeric, 1 character Y or N	EnrollmentIN.iepExemption	Student Information > General > Enrollment > State Reporting Testing > IEP Exemption
Retained Exemption Status	Indicates the student is receiving an exemption based on being retained twice prior to fourth grade.	Alphanumeric, 1 character Y or N	EnrollmentIN.retainedExemption	Student Information > General > Enrollment > State Reporting Testing > Retained Exemption