

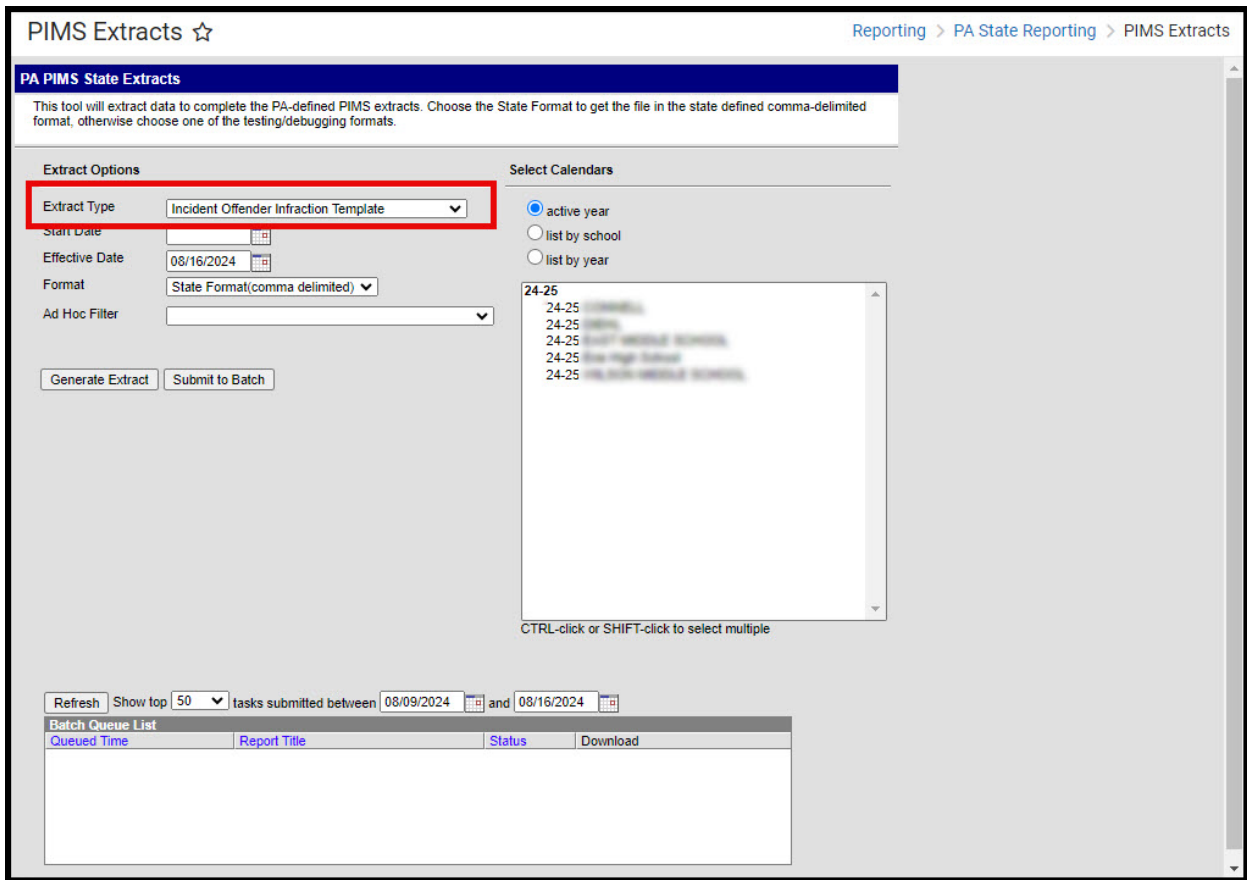
PIMS Incident Offender Infraction Template (Pennsylvania)

Last Modified on 05/06/2025 12:28 pm CDT

Tool Search: PIMS Extracts

The Incident Offender Infraction Template connects an incident and the offender to an infraction. If multiple infractions apply to the incident/offender, multiple records are submitted, one per infraction. If the offender is unknown, the template cannot be submitted.

See the [PIMS Reporting](#) article for additional PIMS Reporting information.



Report Logic

Only students assigned a Role of Offender report.

Only behavior incidents that are marked as Submitted, In Progress or Complete report. Behavior incidents that are in Draft status do not report.

Reports all matching students from that school for the selected calendar. Students report even if they are enrolled in a different calendar and the calendar in which they are enrolled is not selected on the extract editor. Reports all associated behavior data from an incident that happened in a selected calendar. Incident and incident related reports are not included in the

report population if the calendar selected in the extract editor is not the calendar in which the incident was documented. Incidents and students involved in incidents do not report in calendars marked as Exclude (System Administration > Calendar > Calendar > Exclude).

Student enrollments marked as [State Exclude](#) do not report.

Generate the Incident Offender Infraction Template

1. Select **Incident Offender Infraction Template** from the **Extract Type** from the dropdown list.
2. Enter the **Start Date** of the extract in *mmddyy* format or use the calendar icon to select a date.
3. Enter the **Effective Date** of the extract in *mmddyy* format or use the calendar icon to select a date.
4. Select the **Format** of the extract.
5. If desired, select an **Ad hoc Filter** to return only those students included in that filter.
6. Select the appropriate **Calendar(s)** from which to include data on the extract.
7. Click the **Generate Extract** button or the **Submit to Batch** button, if available. The extract displays in the selected format.

Incident Offender Infraction Template Records:2

DistrictCode	IncidentID	OffenderID	InfractionCode	SchoolYearDate	WeaponCount	InfractionComment
105256553	12687	123456789	17	2013-06-30	0	
105256553	12688	234567890	46	2013-06-30	1	This is the incident Detail section

Incident Offender Infraction Template - HTML Format

	A	B	C	D	E	F	G
1	DistrictCode	IncidentID	OffenderID	InfractionCode	SchoolYearDate	WeaponCount	InfractionComment
2	105256553	12687	1234567890	17	6/30/2013	0	
3	105256553	12688	2345678901	46	6/30/2013	1	This is the incident Detail section
4							
5							

Incident Offender Infraction Template - CSV Format

Report Layout

Element	Description	Campus Interface
---------	-------------	------------------

Element	Description	Campus Interface
Submitting District Code	<p>State District Number</p> <p>Reports the district number of the reporting school unless there is a different district located in the serving district.</p> <p>Numeric, 9 digits</p>	<p>District Information > District Detail > State District Number</p> <p>Enrollments > State Reporting Fields > Serving District</p> <p>District.districtNumber</p>
Incident ID	<p>Reports the identification number assigned to the behavior event.</p> <p><i>Numeric, 30 digits</i></p>	<p>Behavior > Behavior Event > Event ID</p> <p>BehaviorEvent.eventID</p>
Offender ID	<p>Reports the student's State ID Number.</p> <p><i>Numeric, 20 digits</i></p>	<p>Demographics > Person Identifiers > State ID</p> <p>Person.stateID</p>
Infraction Code	<p>Reports the infraction code of the offender.</p> <ul style="list-style-type: none"> When the Event State Code is Academic Incident, a value of A reports. When the Event State Code is Conduct Incident, a value of C reports. <p>Values A or C only report when the associated State Resolution is S3 - S9. If resolution is not S3-S9, the A or C incident does not report.</p> <p><i>Alphanumeric, 2 digits</i></p>	<p>Behavior Management > Events and Participants > Event Details > Event Type</p> <p>BehaviorEvent.name</p>
School Year Date	<p>Reports the end date of the school year.</p> <p><i>Date field, 10 characters, 20XX-06-30</i></p>	<p>Calendar Information > Calendar Info > End Date</p> <p>Calendar.endDate</p>
Field 6	Does not report.	N/A

Element	Description	Campus Interface
Infraction Comment	<p>Reports the comment regarding the nature of the infraction. This is a required field when the Infraction Code is 16.</p> <ul style="list-style-type: none"> • Infraction Comment reports as <i>Other weapon or harassment infraction</i> when the Incident Detail field is blank and the Behavior Event state code is 16. • Reports blank when the Behavior Event state code is not 16. <p><i>Alphanumeric, 500 characters</i></p>	<p>Behavior Management > Events and Participants > Participant Details > Comments</p> <p>BehaviorEvent.Comment</p>

Previous Versions

[PIMS Incident Offender Infraction Template \(Pennsylvania\) \[.2243 and previous\]](#)