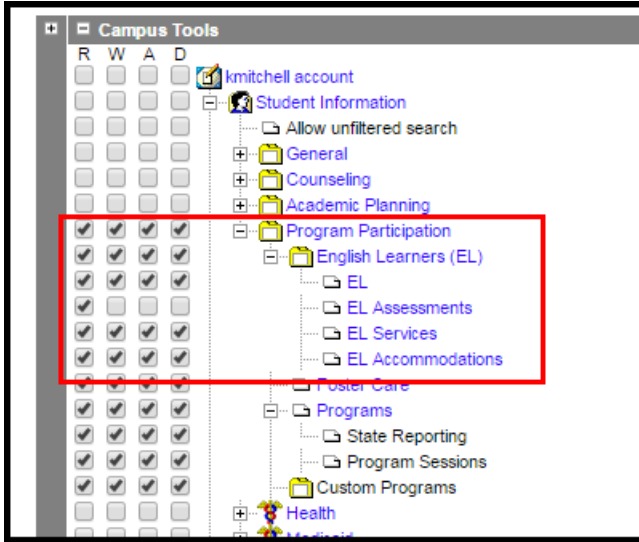


# Tool Rights for English Learners (EL)

Last Modified on 10/21/2024 8:20 am CDT

Tool Search: English Learners

Tool Rights must be assigned for access to the English Learners toolset.



*English Learners Tool Rights*

Right	R	W	A	D
<b>English Learners</b>	Allows the user to view the English Learners (EL) toolset.	Allows the user to edit information to the tools available in the EL toolset.	Allows the user to add new information to the tool available in the EL toolset.	Allows the user to delete EL records.

Right	R	W	A	D
<b>EL</b>	Allows the user to view existing data on the EL tool. For districts associated with a state edition installation, any PDF reports that were sent with a student who transferred from another state district, only R rights are needed to view these reports, as long as Student Records Transfer rights are also assigned.	Allows the user to add information to the existing EL tool.	Allows the user to add new information to the EL tool.	Allows the user to delete the student's EL record.
<b>EL Assessments</b>	Allows the user to view existing EL Assessment data. Assessment information is maintained on the student's <a href="#">Assessment</a> tool. This view of assessments is read only.	N/A	N/A	N/A
<b>EL Services</b>	Allows the user to view existing EL Services.	Allows the user to add information to existing EL Services and print the Service History report.	Allows the user to add new EL Services records.	Allows the user to delete the student's EL Services record.
<b>EL Accommodations</b>	Allows the user to view existing EL Accommodations.	Allows the user to add information to existing EL Accommodations and print the Accommodation History report.	Allows the user to add new EL Services records.	Allows the user to delete the student's EL Accommodations record.

Right	R	W	A	D

---