

Resync (Ed-Fi)

Last Modified on 01/28/2026 12:08 pm CST

Tool Search: Resync

The Resync tool allows users to manually resync data from Campus to the Ed-Fi system. Although Ed-Fi data is sent from Campus to Ed-Fi in real-time (transaction-based), instances where connection is lost, records appear to have not sent, or other various instances may require you to manually request a resync of specific data. Users may also choose to manually resync data if new data has been entered such as new people or schedules and assigned Ed-Fi values to these people after creating Demographics records. This would ensure these people are now linked to Ed-Fi. A resync is automatically done on all person related resources when an Ed-Fi ID is added or changed on a person's Demographics page and saved.

- When the Combine Person tool is used, all records from the deleted person are removed from Ed-Fi and a resync is automatically performed on the kept person.
- All course -related resources can be resynced by course and/or section.
- Users must perform a resync on all data at the beginning of a new school year or when a new Ed-Fi ODS has been connected.

Resync ☆
Reporting > Ed-Fi > Resync

Related Tools ^

⚙ Start Resync

Select an Ed-Fi Configuration and Schools to resync data. If a resync is needed for specific people, enter the Campus Person ID's of the records to resync. When more than one person's records should be resynced, separate the ID's with a line break, comma or space. If running for specific people, non-person-related resources and attendance will not resync. **Warning** For best performance, run one school at a time as running the Resync Tool sends large amounts of data.

Ed-Fi Configuration

School(s) All Schools

Campus Person ID(s) All People

Campus Course ID(s) All Courses

Campus Section ID(s) All Sections

Select Dependencies

- Attendance Information
- Discipline Information
- Grade Information
- Parent Information
- Schedule Information
- Staff Information
- Student Information

Grayed out resource checkboxes indicate a resync is already in progress for that School & Resource Combination.

Resync Tool

Read - View data within the Resync tool.

Write - Perform a resync.

Add - Provides no function for this tool.

Delete - Provides no function for this tool.

For more information about Tool Rights and how they function, see [this Tool Rights article](#).

Prerequisites

- Ed-Fi functionality must be enabled via [Enable Ed-Fi System Preference](#).
- In order to properly use Ed-Fi tools, proper values must be established within the [Ed-Fi Config tool](#). This ensures Campus is communicating with Ed-Fi and successfully sending data to their servers.
- Ed-Fi IDs should be assigned to users via the [Demographics tab](#).

Resync Ed-Fi Data

Users will have to resync all data when a new ODS is connected and all data setup is complete. This will send a large amount of data so users are advised to resync this data during non-peak hours.

Resync ☆

Reporting > Ed-Fi > Resync

⚙️ Start Resync

line break, comma or space. If running for specific people, non-person-related resources and attendance will not resync.
Warning For best performance, run one school at a time as running the Resync Tool sends large amounts of data.

Ed-Fi Configuration
 Core Ed-Fi v 3.x 20-21 ▾

School(s)

Campus Person ID(s)

Campus Course ID(s)

Campus Section ID(s)

All Schools

All People

All Courses

All Sections

Select Dependencies

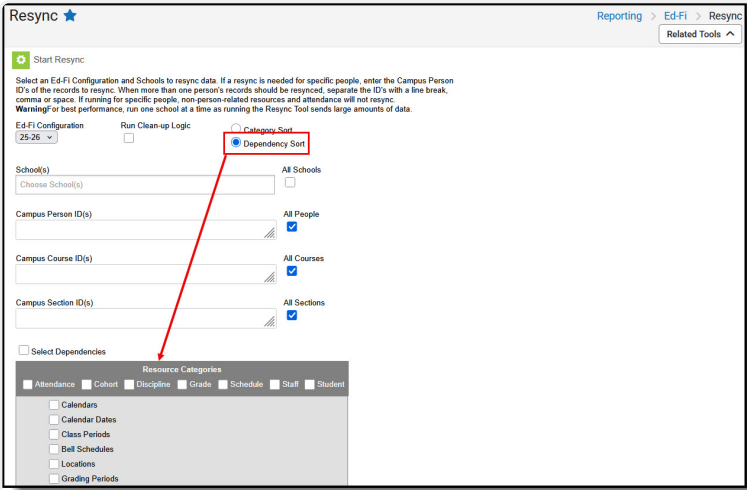
- Attendance Information
 - Student School Attendance Events
 - Student Section Attendance Events
- Cohort Information
- Discipline Information
- Education Organization Information
 - Schools

Resync Ed-Fi Data

Resync Fields

Field	Description
Ed-Fi Configuration	The Ed-Fi Configuration in which records will be resynced. Only records within this year and school are synced.
School(s)	The school(s) the Ed-Fi records will be resynced for.
All Schools	When marked, all schools within the district are resynced. <div style="background-color: #fff9c4; padding: 10px; margin: 5px 0; border: 1px solid #ccc;"> Users are highly encouraged NOT to select All Schools as it can cause severe system performance issues. </div>
Campus Person ID(s)	Allows users to select specific people to be resynced by entering their Person ID.

Field	Description
Campus Course ID(s)	Allows users to select specific courses to be resynced.
Campus Section ID(s)	Allows users to select specific sections to be resynced.
Select Dependencies	When marked, resources that are dependent upon each other are included in the resync.
Resources	Select the resources to be resynced. The resources turned on in the Resource Preferences tool determine which options are available for selection.
Run Clean-up Logic (Tennessee Only)	<p data-bbox="480 696 1422 786" style="background-color: #e1f5fe; padding: 5px;">This option is for Tennessee only.</p> <p data-bbox="475 819 1422 927">Allows users to run the automatic dependency cleanup logic. Running the cleanup logic may dramatically increase the processing time during a resync. This function should only be used if a cleanup is required.</p> <div data-bbox="480 934 1086 1256" style="border: 1px solid black; padding: 5px;"> <p data-bbox="491 943 580 965">Resync ☆</p> <p data-bbox="501 1001 592 1019">Start Resync</p> <p data-bbox="501 1030 1059 1084">Select an Ed-FI Configuration and Schools to resync data. If a resync is needed for specific people, enter the Campus Person ID's of the records to resync. When more than one person's records should be resynced, separate the ID's with a line break, comma or space. If running for specific people, non-person-related resources and attendance will not resync. Warning!For best performance, run one school at a time as running the Resync Tool sends large amounts of data.</p> <p data-bbox="501 1086 892 1178"> Ed-FI Configuration: 25-26 <input type="checkbox"/> Run Clean-up Logic School(s): Choose School(s) <input type="checkbox"/> All Schools </p> <p data-bbox="676 1211 895 1234" style="text-align: center;"><i>Run Clean-up Logic</i></p> </div>
Category Sort (Tennessee Only)	<p data-bbox="480 1279 1422 1368" style="background-color: #e1f5fe; padding: 5px;">This option is for Tennessee only.</p> <p data-bbox="475 1402 1155 1431">Allows users to reorder the Resource list by Category</p> <div data-bbox="480 1438 1257 1995" style="border: 1px solid black; padding: 5px;"> <p data-bbox="491 1447 564 1469">Resync ☆</p> <p data-bbox="501 1491 592 1509">Start Resync</p> <p data-bbox="501 1514 940 1554">Select an Ed-FI Configuration and Schools to resync data. If a resync is needed for specific people, enter the Campus Person ID's of the records to resync. When more than one person's records should be resynced, separate the ID's with a line break, comma or space. If running for specific people, non-person-related resources and attendance will not resync. Warning!For best performance, run one school at a time as running the Resync Tool sends large amounts of data.</p> <p data-bbox="501 1556 807 1599"> Ed-FI Configuration: 25-26 <input type="checkbox"/> Run Clean-up Logic <input checked="" type="radio"/> Category Sort <input type="checkbox"/> Dependency Sort </p> <p data-bbox="501 1601 807 1644"> School(s): Choose School(s) <input type="checkbox"/> All Schools </p> <p data-bbox="501 1646 807 1688"> Campus Person ID(s): <input type="text"/> <input checked="" type="checkbox"/> All People </p> <p data-bbox="501 1691 807 1733"> Campus Course ID(s): <input type="text"/> <input checked="" type="checkbox"/> All Courses </p> <p data-bbox="501 1736 807 1778"> Campus Section ID(s): <input type="text"/> <input checked="" type="checkbox"/> All Sections </p> <p data-bbox="501 1780 807 1921"> <input type="checkbox"/> Select Dependencies <input checked="" type="checkbox"/> Attendance Information <input type="checkbox"/> Student School Attendance Events <input checked="" type="checkbox"/> Cohort Information <input type="checkbox"/> Cohorts <input type="checkbox"/> Student Cohort Associations <input type="checkbox"/> Discipline Information </p> <p data-bbox="791 1951 951 1980" style="text-align: center;"><i>Category Sort</i></p> </div>

Field	Description
<p>Dependency Sort (Tennessee Only)</p>	<p>This option is for Tennessee only.</p> <p>Allows users to reorder the Resource list in dependency order.</p>  <p style="text-align: center;"><i>Dependency Sort</i></p>

To resync records:

1. Select the **Configuration**.
2. Select which **School(s)** will resync records with Ed-Fi. This field will begin to show school results as a value is typed into the field. You may also scroll through the entire list of schools by simply entering the cursor in the field and scrolling the available dropdown list. You may also select **All Schools** if you would like to resync records for all schools within the district.

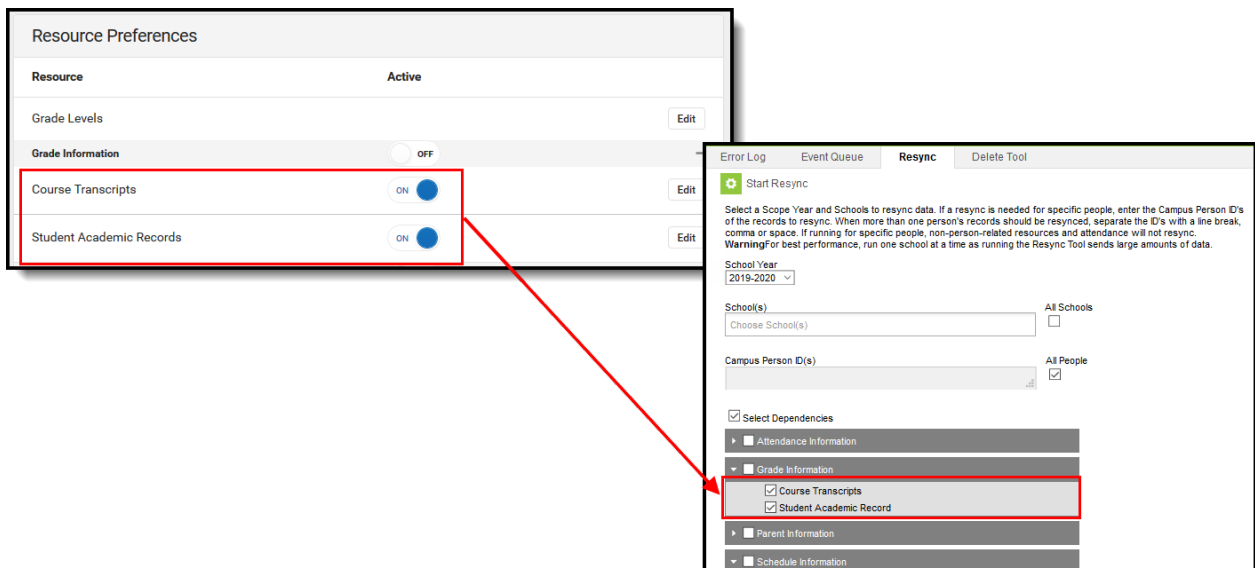
Users are highly encouraged NOT to select All Schools as it can cause severe system performance issues.

3. If only records for specific people should be resynced, enter their **Campus Person ID(s)**. Each ID should be separated by a line break, comma, or space. Non-person related resources and attendance will resync for specific people.
4. If desired, select specific courses and/or sections to be resynced.
5. Once the Configuration and School(s) are set, the data set(s) needs to be marked. The resources turned on in the [Resource Preferences](#) tool determine which options are available for selection here. For example in the image below, turning on the Course Transcript and Student Academic Record resources in the Ed-Fi > Ed-Fi Configuration > Resource Preferences area enables users to select these items for resync in the Resync tool.

Review the [Core Recommended Resync Order](#) for guidance on when to sync each resource.

Note: The linked article is for Core Ed-Fi only. For states not using Core Ed-Fi, please see your [state-specific Ed-Fi information](#).

Mark the **Select Dependencies** checkbox to include those items that are dependent upon each other. For example, when Select Dependencies is marked, and the Course Offerings option is selected in the Schedule Information section, the Sessions option is also selected.



6. Select **Start Resync** to resync selected data sets.

When a resync is in progress, resources become read only for the resources/school combination that is being resynced.