

Grading Tasks (Courses)

Last Modified on 02/02/2026 3:23 pm CST

[Best Practices for Grading Tasks](#) | [Grading Task Information in Ad hoc Query Wizard](#) | [Course Grading Task Detail Editor](#) | [Add Grading Tasks to Courses](#) | [Copy Grading Tasks to Another Course](#)

Tool Search: Course Grading Tasks

The **Grading Tasks** tool lists the items the teachers grade as part of the grading process. These tasks include mid-term grades, quarter grades, semester grades, etc. These grading tasks are created in the [Grading Tasks](#) tool in the Grading and Standards area.

If you are using the [Multiple Year Academic Planning](#) functionality, see the Best Practices for more information.

Course Grading Tasks ☆

Scheduling & Courses > Courses > Course Grading Tasks

0011 Core English I

Related Tools ^

Save

Add

Copy

Grading Task Editor

Grading Task	Credit Group	Credit Type	Score Group	Credit	Term GPA	Post-only
Quarter			Secondary Score Group		1.000	
Semester	High School	English	Secondary Score Group	1.000		

Icon Legend:

Locked to Course Master

Linked Course Catalog Unlocked

Course Master Unlinked

Course Managed

Course Grading Task Detail

Grading Task

Quarter

Score Group

Secondary Score Group

Term GPA

1

Credit

Credit Type

Credit Overflow Override

Term Mask





☒ Term 1 ☒ Term 2 ☒ Term 3 ☒ Term 4

☐ Post-only Grading Task

Course Grading Tasks

See the [Course Grading Tasks Tool Rights](#) article for information about rights needed to use this tool.

Grading Tasks can also be managed at the [Course Master](#) level. Icons in the Grading Task List provide more information about each task:

Icon	Text	Description
	Locked to Course Master	Indicates that the task corresponds to a task at the Course Master level. These tasks are not editable in this tool.
	Linked Course Catalog Unlocked	Indicates that tasks are unlocked for the whole Course Catalog . These tasks are editable in this tool.
	Course Master Unlinked	Indicates that the tasks is associated with a tasks at the Course Master level, but that the link with that task is broken. To relink tasks: <ul style="list-style-type: none"> • Use the Push All Course Masters tool: select a Push Mode of <i>Overwrite</i> and leave <i>Grading Tasks</i> marked in the Data to be Pushed section. • Use the Course Status tool. • Click the <i>Reset Data to Course Master Settings</i> button (if the Course Catalog is unlocked).
	Course Managed	Indicates that the task is managed at the Course level and does not have a corresponding record at the Course Master level.

Visit the [Course Status](#) tool to view a list of all courses associated with a given course master, see the status of grading setup for each course, and relink courses as needed.

Best Practices for Grading Tasks

When using [Academic Planning](#) functionality:

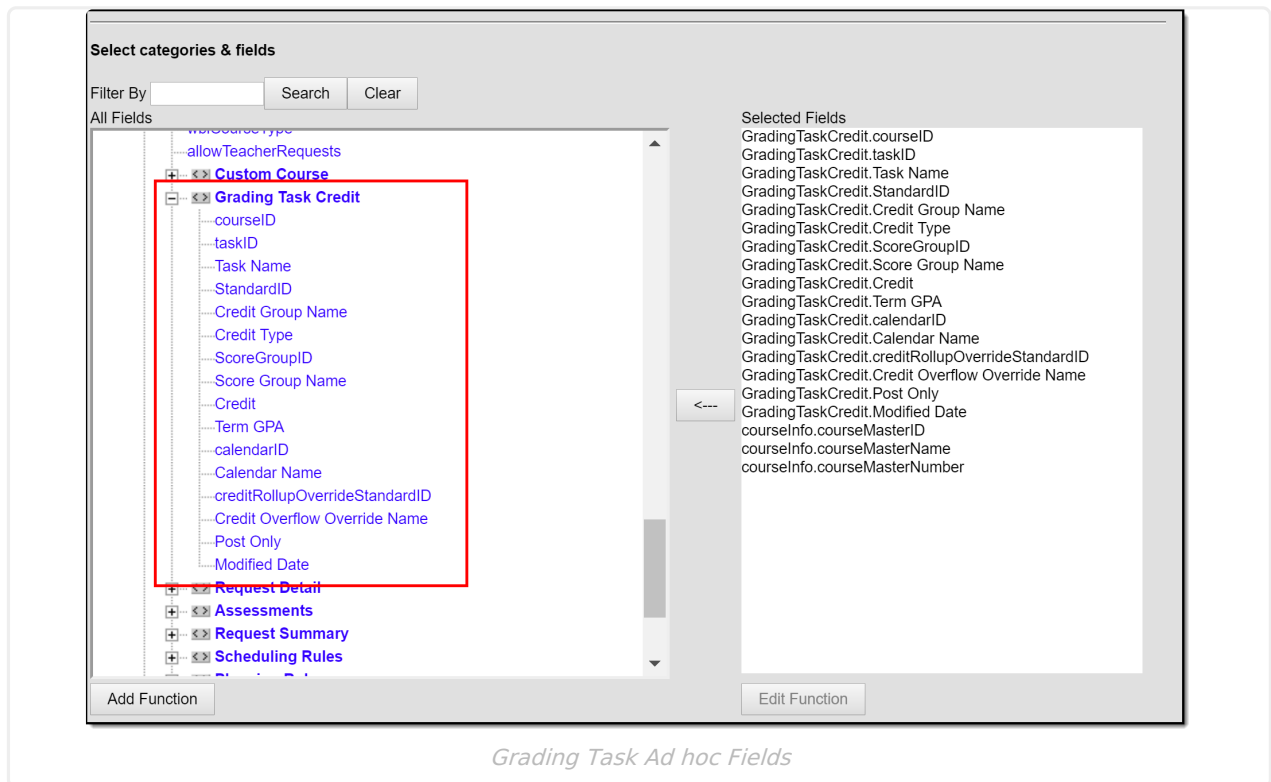
- When a calendar is assigned a Course Master, the Credit Overflow Override field must be set on the Grading Task of the course in the course master.
- When a calendar is not assigned a Course Master, and courses are maintained at each school, the Credit Overflow Override field must be set on the Grading Task of the course.

For districts that have more than one high school and multi-year academic planning is used, it is recommended that [Course Masters](#) be created. This reduces the amount of individual course maintenance that needs to be performed.

Grading Task Information in Ad hoc Query Wizard

Course Grading Task fields are available in the Query Wizard when using the Course/Section Data

type in the **Course > Course Information > Grading Task Credit** folder.

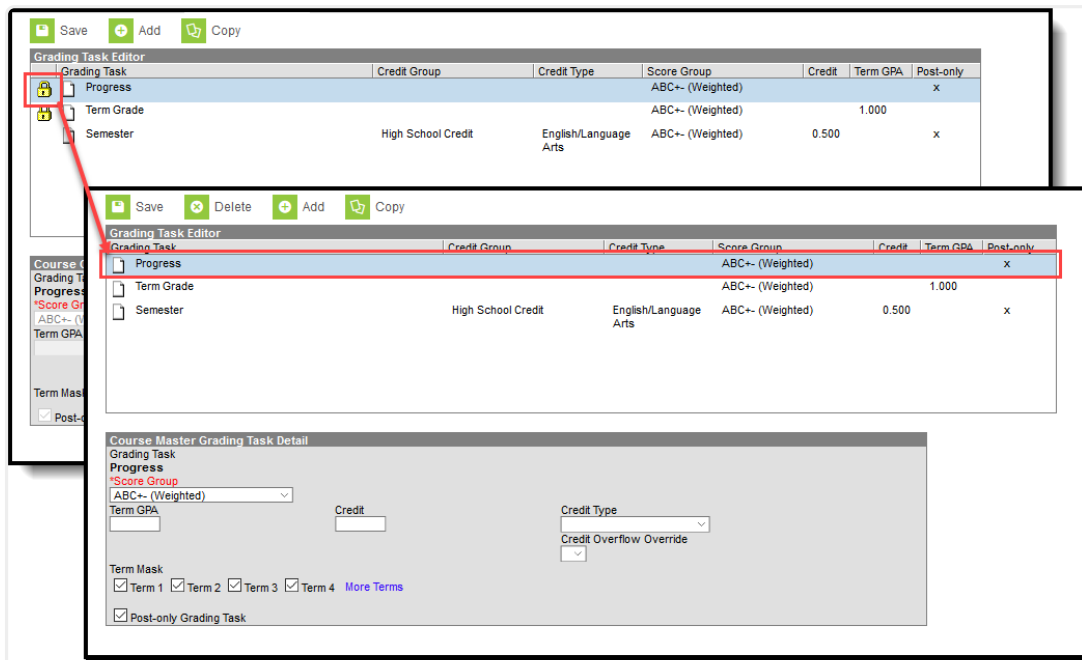


Course Grading Task Detail Editor

Before assigning grading tasks to courses, verify the following:

- [Grading Tasks](#) are created in the Grading and Standards area.
- [Score Groups](#) are created in the Grading and Standards area.
- [Credit Types](#) are created in the Grading and Standards area.

The Grading Task Editor provides a summary of the grading task, including its name, assigned credit group and credit type (if listed), the score group, the credit value and the term GPA. It also indicates if that grading task is locked. The locked icon displays when the course is linked to a Course Master, and grading tasks are assigned at the Course Master level. Changes can only be made through the Course Master. Fields are marked as locked on the [Course Catalog](#).



Grading Task Lock Display from Course Master

The Grading Task editor provides a list of grading tasks and a detail editor showing specific elements of the selected grading task. The following provides a description of the fields on the Course Grading Task editor.

Field	Description	Ad hoc Fields
Score Group	Determines the points and/or letter grades that is used when scoring the grading task.	GradingTaskCredit.ScoreGroupName
Term GPA	Indicates the weight used when calculating the grade of the student.	GradingTaskCredit.TermGPA
Credit	Indicates the amount of credit the student receives upon completion of the course or when the course is posted on a transcript. This value depends on the set up of courses - whole year courses or semester long courses. This is usually only populated on those tasks that are posted to transcripts.	GradingTaskCredit.Credit
Credit Type	Indicates the group of credit the student receives when credit is given. This is used in Academic Planning when tracking the progress of the student towards graduation.	GradingTaskCredit.CreditType

Field	Description	Ad hoc Fields
Credit Overflow Override	<p>This field is set for a single course Grading Task and is used to roll credits when the current credit type has met its credit requirements.</p> <p>The credits from the course first try to roll up to the override credit type. If that credit type has met its requirements, it then looks at the overflow setup for the course's credit type.</p> <p>A particular course may be able to count towards more than one credit type. For example a particular CTE course may fulfill a science credit or a math credit. This course would be set up with its default credit type of Math and an override rollup credit type of Science. If the student has completed their math requirement, this course would then be counted as a science credit (only if a science credit was still needed). If both credit requirements were met, then the default rollup would occur, likely going from math to elective credit.</p>	GradingTaskCredit.CreditOverflowName
Term Mask	<p>Selection indicates when the task must be graded.</p> <p>In a four-term setup, a quarter grade would be graded at the end of each term, which would mean the Term Mask is marked for all four terms. For semester grade tasks, the term mask would only be selected at the end of term 2 and term 4.</p>	N/A
Post-only Grading Task	Indicates a grading task cannot be aligned to assignments and categories in the teacher's Grade Book. Post-only Grading Tasks are for posting grades only, not for aligning student work.	<p>GradingTaskCredit.PostOnly</p> <p>Reports a value of 1 if the checkbox is marked; reports a value of 0 if the checkbox is not mark.</p>
Exclude from Ed-Fi (WI only)	Indicates the Grading task is not reported to Ed-Fi.	

Add Grading Tasks to Courses

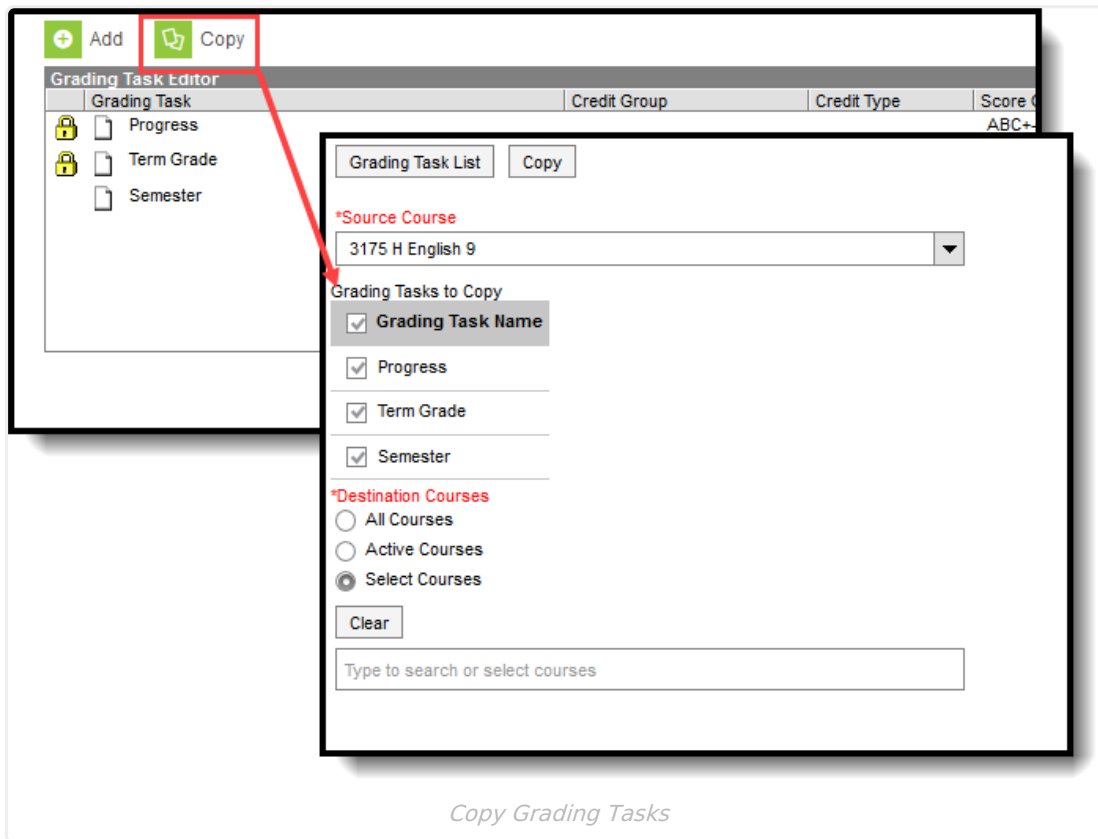
1. Click the **New** icon. A **Course Grading Task Detail** displays.
2. Select the **Grading Task** to add to the Courses from the dropdown list.
3. Select the **Score Group** from the dropdown list.
4. Enter the **Term GPA** weight the student receives.
5. Enter the **Credit** value the student receives.
6. Select the **Credit Type** from the dropdown list.
7. If desired, select the appropriate **Credit Overflow Override** option from the dropdown list.
8. Mark the appropriate **Term Mask** for the grading task.
9. If desired, mark the **Post-only Grading Task** checkbox.
10. Click the **Save** icon when finished.

Copy Grading Tasks to Another Course

Use the **Copy** icon to easily add the Grading Tasks associated with one course to another course (called the Source Course) to one or more other courses (called Destination Courses). The **Copy** icon displays when proper tool rights are assigned.

When copying a grading task from one course to another:

- Grading tasks that already exist in the destination course are not copied again. This means when five grading tasks are selected to be copied in the source course, but three of those already exist in the destination course, only the two that do not exist in the destination course are copied.
- Destination courses cannot be tied to any course masters.
- Grading tasks are copied from one course to another course within the same calendar year.



1. Select a specific grading task to copy, and then click the **Copy** icon. Or, just click the **Copy** icon without selecting a grading task. When a specific grading task is selected to copy, that grading task is the only one selected to copy; when no grading tasks are selected to copy, all of the grading tasks in that course are automatically selected to copy.
2. Select the **Source Course** from the dropdown list. This displays the currently selected course. To change this selection, begin typing in the dropdown field.
3. Mark the **Grading Tasks to Copy**. Or, clear the selections by clicking the checkbox in the gray **Grading Task Name** header.
4. Select the **Destination Course(s)**:
 1. **All Courses**: copies tasks to all courses in the calendar.
 2. **Active Courses**: copies tasks to all courses in the calendar that currently have the Active flag marked.
 3. **Select Courses**: copies tasks to the selected courses. To select a course, type the Number or Name in the search field. Multiple courses can be selected. Click **Clear** to remove all courses from the list.
5. Click the **Save** button to copy the selected grading tasks to the destination course.

If there are no grading tasks to copy, an alert displays indicating all selected grading tasks already exist in the destination course master.