

Class Serve Setup (Application Manager)

Last Modified on 03/11/2024 8:45 am CDT

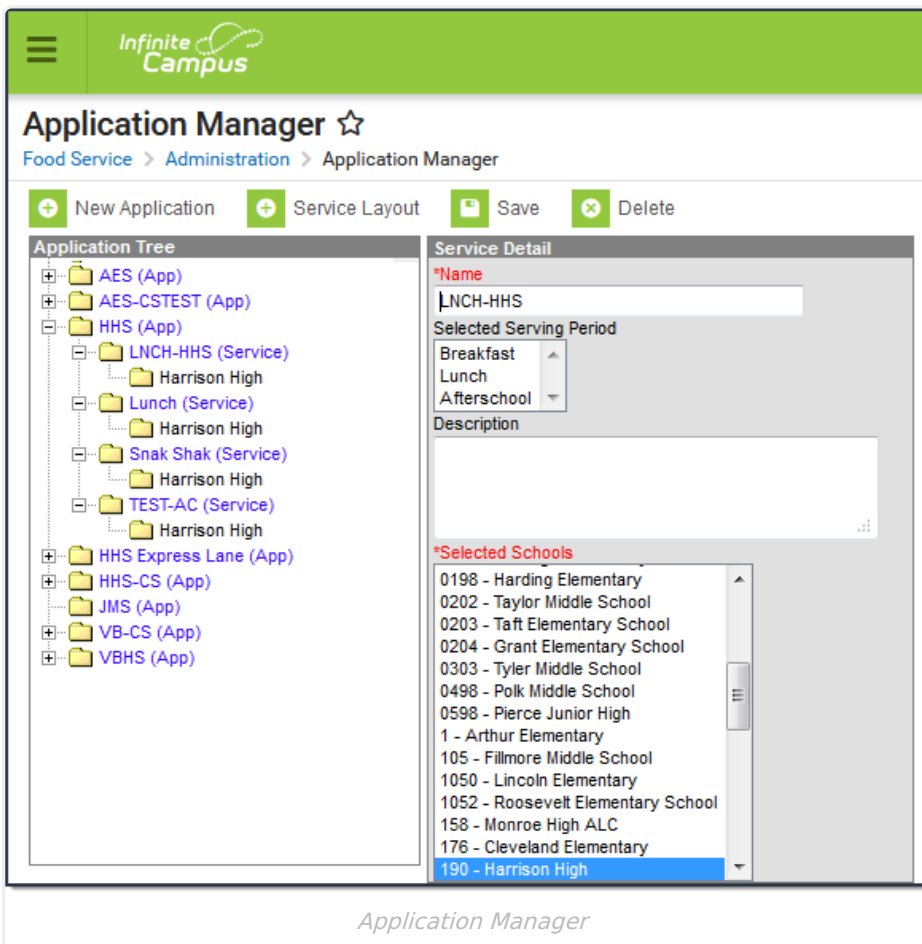
[Create a New Application](#) | [Create New Services](#) | [Create Service Layouts for Class Serve](#)

Point of Sale 1.0 has been deprecated as of 7/1/2023. Please see the [Migration Checklist \(POS 2.0\)](#).

Classic View: Point of Sale > Administration > Application Manager

Search Terms: Application Manager

The [Class Serve](#) option may be used when a meal, snack or milk is served in the classroom during the school day. The teacher of that course may then record the students who received the item and have the cost of the item deducted from the student’s POS Account balance. The following information describes the setup required in order to implement a class serve option.

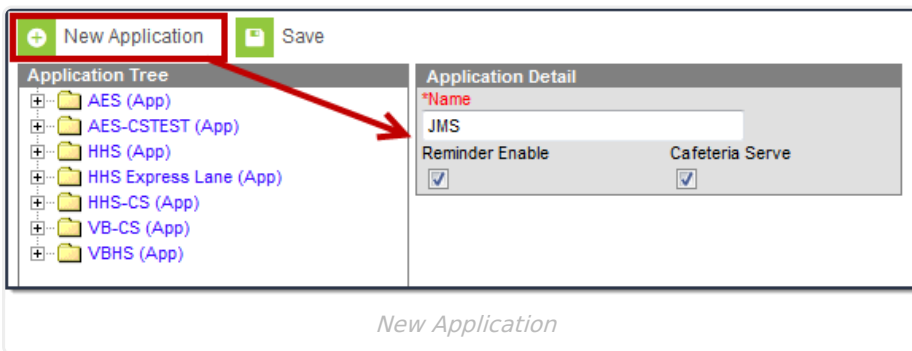


Create a New Application

Applications provide a central location for grouping services based on location or types of service.

If the district is also using POS Terminals, they may choose to add a Class Serve service to an existing Application.

Before applications and services can be created, [Item Categories](#) and [Purchasable Items](#) must first be defined.



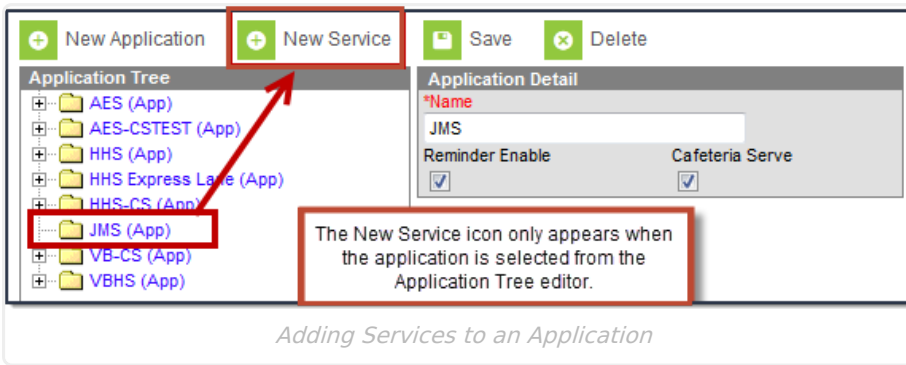
1. Select the **New Application** button. The Application Detail editor will appear to the right of the Application Tree.
2. Enter a **Name** for the application.
3. **DO NOT** mark the **Reminder Enable** or **Cafeteria Serve** checkboxes. These fields are not used as part of Class Serve.
4. Select the **Save** icon. The application will appear in the Application Tree in alphabetical order.

Once the application is created, services need to be created for the application.

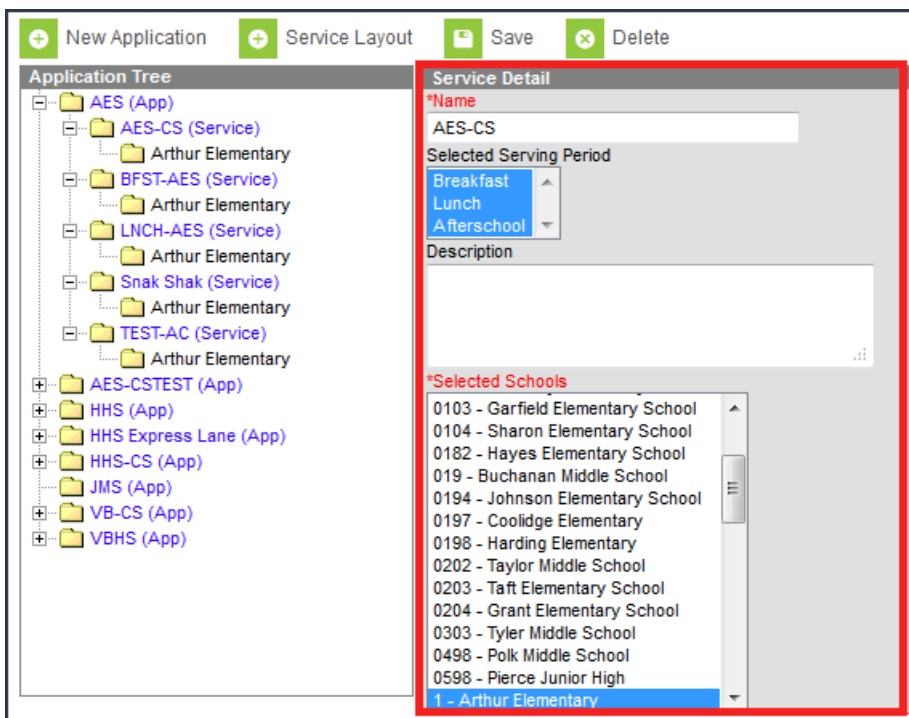
Create New Services

Services define what item(s) are being served during what serving period(s) and within what school(s).

Before services can be created, [Item Categories](#) and [Purchasable Items](#) must first be defined.



1. Select the application for which to assign service from the Application Tree.
2. Click the **New Service** icon. The Service Detail editor will appear to the right of the Application Tree.

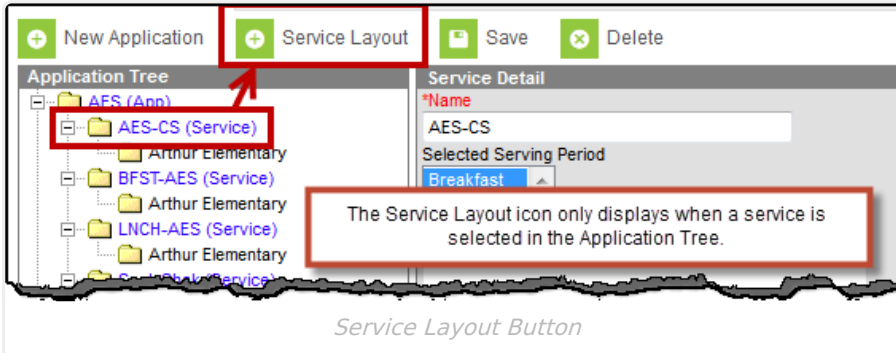


3. Enter the **Name** of the service.
4. Select the **Serving Period(s)**.
5. Enter a **Description** about the service.
6. Select which **Schools** are allowed to use this service.
7. Click the **Save** button. The service and assigned schools will appear below the corresponding application in the Application Tree.
8. Repeat this process for as many services or menu tabs needed for the application.

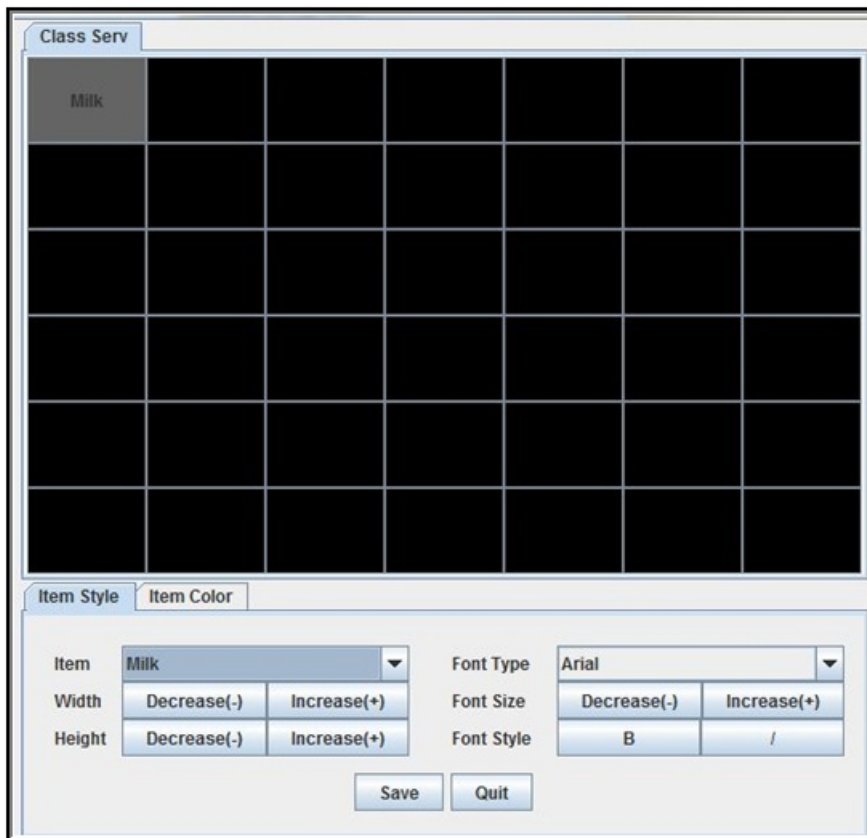
Create Service Layouts for Class Serve

Once services are created for an application, the Service Layout should be defined and saved. The service layout for Class Serve determines which items are available for teachers to check off during a Class Serve period. The menu screen will NOT be seen by teachers at that time, they will only see a list of items.

Service Layout uses a Java applet to open. Users must install the [Java](#) application in order to use this feature.



1. Select the service from the Application Tree and click the **Service Layout** button. If this is the first time running the Service Layout tool, a separate window will appear asking the user to download a java-specific file.
2. Ensure a current version of Java is installed on the computer and open the java file provided by the Application Manager tool.



To set up the Service Layout, select each open square and complete the following steps.

1. Assign an **Item** to the square.
2. **Increase(+)** or **Decrease(-)** the width of the item square selected.
3. **Increase(+)** or **Decrease(-)** the height of the item square selected.

4. Determine the **Font Type** of the item text.
 5. **Increase(+)** or **Decrease(-)** the font size.
 6. Select the **Font Style**.
 7. Repeat Steps 1 - 6 until all appropriate items have been added to the Service Layout screen.
 8. Select **Save**.
-