

# Create Course Plan Templates for Academic Programs

Last Modified on 06/30/2025 9:50 am CDT

In the Campus.2523 release, the **Academic Programs** and **Graduation Programs** tools were combined into a single tool.

► [Click here to expand...](#)

Both types of programs can now be created and managed with the new tool, found at **Student Information > Program Administration > Academic and Graduation Programs**.

Consult the articles in the [Academic and Graduation Programs](#) category for more information.

[Best Practices](#) | [Things to Know](#) | [Course Plan Template Warnings, Alerts and Errors](#) | [Add Courses to a Plan Template](#)

Tool Search: Academic Programs

The Course Plan Template allows counselors/administrators to mass add courses to a student's [Course Plan](#). For example, a graduation program for incoming eighth graders contains all of the core courses high school students must take and pass for the next four years. Instead of adding those courses individually for each student, administrators can create course plans for that graduation program. When students are assigned to that program, the Academic Planner automatically adds the courses from the Course Plan Template into the students Course Plan.

## Academic Programs ☆

Student > Program Administration > Academic Programs

Save Template

New

☒ Show District Programs

Academic Programs

- Computer Science
  - Course Requirements
  - Test Requirements
  - Compound Requirements
  - GPA Requirements
  - Course Plan Template
- Culinary Arts
- Life Skills

Course Plan Template

This tool associates a program with a Course Plan Template. For detailed information on entering data in these fields, refer to the [Knowledge Base](#).

When students are assigned to this Program, the courses selected in this Course Plan Template are applied to their plan.

Calendar to select courses from:

20-21 Harrison High

Clear Template

Grade: 09 0.0 / 0.0	Grade: 10 1.0 / 0.0	Grade: 11 1.0 / 0.0	Grade: 12 1.0 / 0.0
Type to search or select courses	Type to search or select courses	Type to search or select courses	Type to search or select courses
<b>Technology (3.0 / 0.0)</b>			
0.0 / 0.0	1.0 / 0.0	1.0 / 0.0	1.0 / 0.0
Type to search or select courses	<div>✖ 8400 Web Design I - 0.5</div> <div>✖ 8410 Web Design II - 0.5</div>	<div>✖ 8700 Computer Literacy - 0.5</div> <div>✖ 8750 Computer Science - 0.5</div>	<div>✖ 8720 Java Programming - 0.5</div> <div>✖ 8774 Computer Repair - 0.5</div>
<b>Vocational (0.0 / 0.0)</b>			
0.0 / 0.0	0.0 / 0.0	0.0 / 0.0	0.0 / 0.0
Type to search or select courses	Type to search or select courses	Type to search or select courses	Type to search or select courses
<b>World Language (0.0 / 0.0)</b>			
0.0 / 0.0	0.0 / 0.0	0.0 / 0.0	0.0 / 0.0
Type to search or select courses	Type to search or select courses	Type to search or select courses	Type to search or select courses

Course Plan Template for Academic Programs

Additional courses the student wants to plan outside of this template can be added by the student on the Portal using the [Academic Planner](#) tool. Additional single courses the counselor wants a particular student to plan can be added using the [Course Plan](#) tool in Academic Planning.

Individual changes can still be made for students who need to alter the plan.

Students can take the courses in different grade levels than what the plan suggests. If the template indicates that Algebra I be taken in 9th grade, but the student successfully completed that course in 8th grade, the 9th grade math course might instead be Geometry, which is planned for 10th grade.

When planning for current year, course plan templates apply any course that is on the template for a student who meets the current year planning requirements (no scheduled courses for the current year, no transcript courses for the current year). If planned courses already exist for students in the current year grade level, the Course Plan Template does not apply course plans to the current year grade level. See the [Course Plan](#) article for more information on planning for the current year.

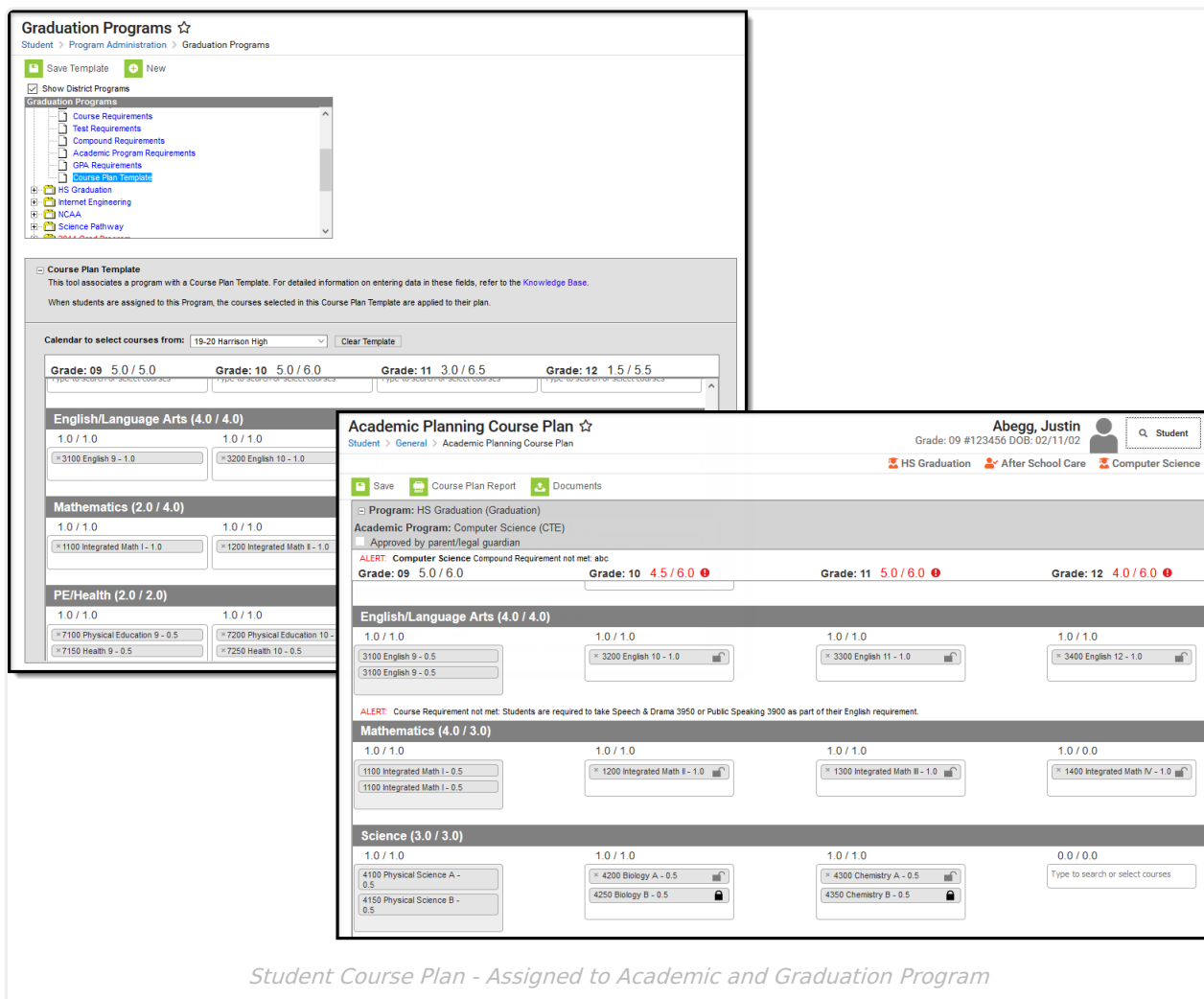
## Best Practices

This tool is best used for incoming 9th grade students who do not have any existing scores posted

to a transcript from a previous high school enrollment. When a program is assigned to a student, students are assigned this template, along with the other program requirements (course requirements, test requirements, etc.). The Course Plan Template courses are automatically added to the student's Course Plan tab. If the student is assigned both a graduation program and an academic program, the academic program courses also display on the Course Plan tab.

Course Plan Templates only add a planned course into a cell if nothing has previously been planned or added to the student's transcript. The Course Plan Template only adds courses to the Course Plan if the box in the Credit Type and Year is blank. **It does not append/overwrite if there is a planned course or a course on the transcript in that credit type/year.**

In the example below, the student is assigned both a graduation program and an academic program.



**Graduation Programs** ☆  
Student > Program Administration > Graduation Programs

Save Template New

Show District Programs

Graduation Programs

- Course Requirements
- Test Requirements
- Compound Requirements
- Academic Program Requirements
- GPA Requirements
- Course Plan Template

HS Graduation  
Internet Engineering  
NCAA  
Science Pathway

**Course Plan Template**  
This tool associates a program with a Course Plan Template. For detailed information on entering data in these fields, refer to the [Knowledge Base](#).  
When students are assigned to this Program, the courses selected in this Course Plan Template are applied to their plan.

Calendar to select courses from: 19-20 Harrison High Clear Template

Grade: 09 5.0 / 5.0 Grade: 10 5.0 / 6.0 Grade: 11 3.0 / 6.5 Grade: 12 1.5 / 5.5

**English/Language Arts (4.0 / 4.0)**  
1.0 / 1.0 1.0 / 1.0  
3100 English 9 - 1.0 3200 English 10 - 1.0

**Mathematics (2.0 / 4.0)**  
1.0 / 1.0 1.0 / 1.0  
1100 Integrated Math I - 1.0 1200 Integrated Math II - 1.0

**PE/Health (2.0 / 2.0)**  
1.0 / 1.0 1.0 / 1.0  
7100 Physical Education 9 - 0.5 7200 Physical Education 10 - 0.5  
7150 Health 9 - 0.5 7250 Health 10 - 0.5

**Academic Planning Course Plan** ☆  
Student > General > Academic Planning Course Plan

Abegg, Justin Grade: 09 #123456 DOB: 02/11/02 Student

HS Graduation After School Care Computer Science

Save Course Plan Report Documents

Program: HS Graduation (Graduation)  
Academic Program: Computer Science (CTE)  
Approved by parent/legal guardian

ALERT: Computer Science Compound Requirement not met: abc

Grade: 09 5.0 / 6.0 Grade: 10 4.5 / 6.0 Grade: 11 5.0 / 6.0 Grade: 12 4.0 / 6.0

**English/Language Arts (4.0 / 4.0)**  
1.0 / 1.0 1.0 / 1.0 1.0 / 1.0 1.0 / 1.0  
3100 English 9 - 0.5 3200 English 10 - 1.0 3300 English 11 - 1.0 3400 English 12 - 1.0  
3100 English 9 - 0.5

ALERT: Course Requirement not met: Students are required to take Speech & Drama 3950 or Public Speaking 3900 as part of their English requirement.

**Mathematics (4.0 / 3.0)**  
1.0 / 1.0 1.0 / 1.0 1.0 / 1.0 1.0 / 0.0  
1100 Integrated Math I - 0.5 1200 Integrated Math II - 1.0 1300 Integrated Math III - 1.0 1400 Integrated Math IV - 1.0  
1100 Integrated Math I - 0.5

**Science (3.0 / 3.0)**  
1.0 / 1.0 1.0 / 1.0 1.0 / 1.0 0.0 / 0.0  
4100 Physical Science A - 0.5 4200 Biology A - 0.5 4300 Chemistry A - 0.5 Type to search or select courses  
4150 Physical Science B - 0.5 4250 Biology B - 0.5 4350 Chemistry B - 0.5

*Student Course Plan - Assigned to Academic and Graduation Program*

This tool can also be used for students who already have scores posted to their transcript. The course plan template does not add courses from a grade level the student has completed (ended enrollment). If a student transfers from another high school in the junior year, and has transcript records for the freshman and sophomore year, courses that are on the template for the junior and senior year are added to the transfer student's course plan for Grade 11 and Grade 12. The columns for Grade 09 and 10 contain the transcript information (from the transfer courses).

# Things to Know

For courses like Band or Choir, or other courses that can be taken multiple times throughout a student's high school career, make sure these sorts of courses are marked as Repeatable. Another option is to set these courses up as individual courses for each grade level. 9th graders would have a Band - Grade 09 course, 10th graders would have a Band - Grade 10 course, etc. The Course Plan Template will not add a course to a student's plan that has already been planned, which means a course that could be repeated would not be added.

If the student has already planned courses for future grade levels in a certain credit area, courses from the plan template are not added for that area. If a student already has transcript scores for a course in the plan, it is not added again.

Courses in which the student is already scheduled are not added to the course plan.

Courses cannot be locked on the plan template. This action is only available to a counselor on the student's Course Plan tab.

Using Course Plan Templates is a plan for students' graduation or career tech program. This is not a tool to mass assign actual courses to student schedules. That process is performed using the [Scheduling Board](#) and other Scheduling tools.

## Course Plan Template Warnings, Alerts and Errors

Just like the display on a student's Course Plan, alerts display on the Course Plan Template when a [Planning Rule](#) is violated during the creation of the template. Each time a change is made on the Course Plan, all rules and requirements are reevaluated and updated alerts and messages display. The Course plan does not need to be saved to show these alerts. When the alerts have been satisfied, they will be removed automatically.

Counselors can still save course plans when alerts and warnings exist.

**Academic Programs** ☆

Student > Program Administration > Academic Programs

Save Template New

**Academic Programs**

- Culinary Arts
- Life Skills
- Computer/Tech
- STEM
  - Course Requirements
  - Test Requirements
  - Compound Requirements
  - GPA Requirements
  - Course Plan Template
- Animal Science
- FLIR&R Plan 2

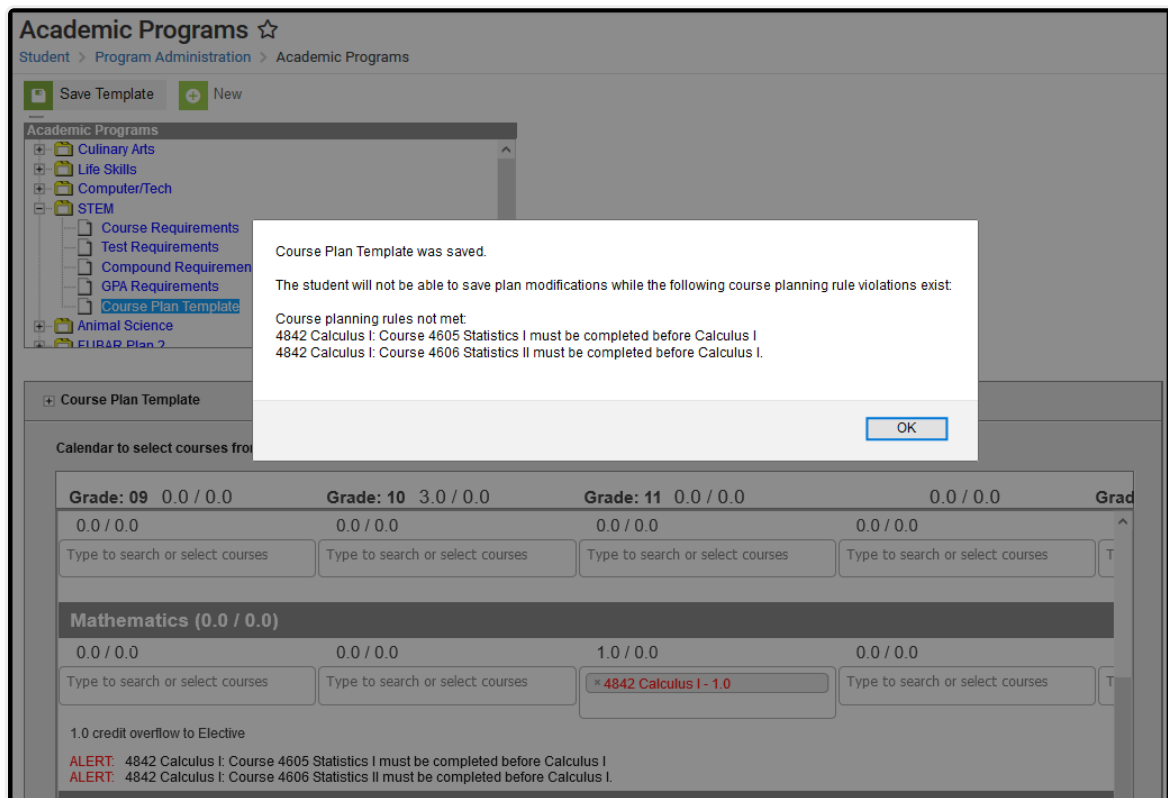
**Course Plan Template**

Calendar to select courses from: 2019-20 Armstrong Clear Template

Grade: 09 0.0 / 0.0	Grade: 10 3.0 / 0.0	Grade: 11 0.0 / 0.0	Grade: 12 0.0 / 0.0	Grade: 13 0.0 / 0.0
0.0 / 0.0	0.0 / 0.0	0.0 / 0.0	0.0 / 0.0	0.0 / 0.0
Type to search or select courses	Type to search or select courses	Type to search or select courses	Type to search or select courses	Type to search or select courses
<b>Mathematics (0.0 / 0.0)</b>				
0.0 / 0.0	0.0 / 0.0	1.0 / 0.0	0.0 / 0.0	0.0 / 0.0
Type to search or select courses	Type to search or select courses	✖ 4842 Calculus I - 1.0	Type to search or select courses	Type to search or select courses
1.0 credit overflow to Elective				
ALERT: 4842 Calculus I: Course 4605 Statistics I must be completed before Calculus I ALERT: 4842 Calculus I: Course 4606 Statistics II must be completed before Calculus I				

*Alerts and Warnings in Course Plan Templates*

In the image above, the template has placed course (4842) in Grade 11 without its prerequisite courses (4605 & 4606) planned. The course shows in red and an alert is displayed below the credit type indicating an issue exists. The template can be saved with this alert, but the student will not be able to modify their plan. Below, a warning message displays, indicating such.



*Course Plan Template Saved with Active Alert*

Warnings display when:

- There is a failure in the template that prohibits the student from modifying and saving their course plan.

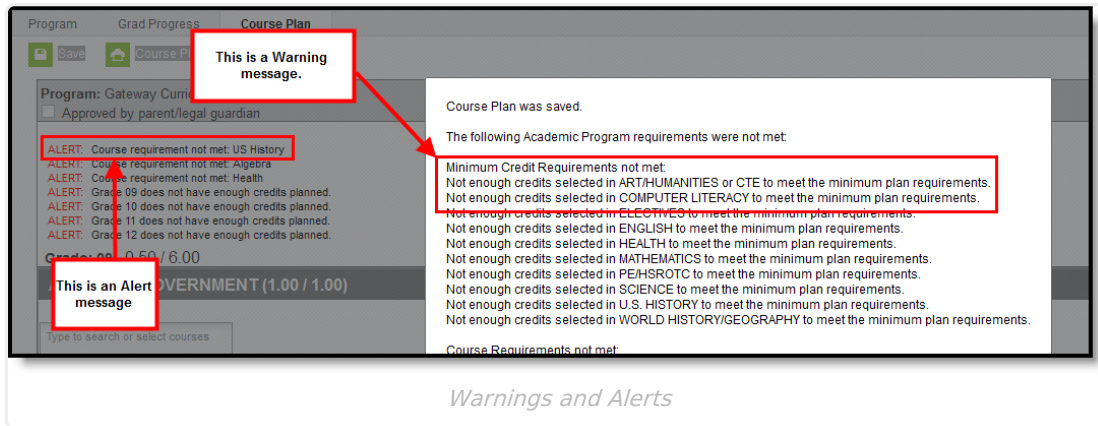
Alerts display when:

- A grade does not have enough credits planned.
- A credit type does not have enough credits planned.

Students who have an Academic Plan that contains an error will not be able to save changes made to their course plan from the Portal.

Certain [Portal Display Options](#) apply here that can be turned on or off to show these rules.

- When the **Enforce All Rules** option is marked as part of the Academic Planner option, students can only save their academic plan if it meets ALL requirements and planning rules that have been established.
- When the **Enforce All Rules** options is NOT marked, students can save their plan without meeting all requirements, but all planning rules must still be met. Warning messages from failed requirements and failed planning rules display so users can see the issues but still save the entry.



## Add Courses to a Plan Template

Only one template can be created per program.

The courses display based on the selected calendar in the Campus toolbar. To load courses from another calendar, change the **Calendar to select courses from** selection. Only calendars in which the program is available are available for selection (School selection is populated on the Graduation or Career Tech Programs tab, or the program is available for all schools in the district).

1. Click in the text box below the number of credits for a certain grade level. Active courses meeting that credit type display for selection.
2. Choose the desired course(s). When they are added, they display the same way a planned course does and the number of credits is updated. The credits assigned to a course appear after the course name.
3. Add enough credits for future years as needed.
4. Repeat these steps for each credit type. At the end of the process, the student should have a clear idea of what courses need to be taken in each grade level to meet the requirements of the assigned program.
5. Click the **Save** icon when finished.

Click the X next to any added course that does not need to be on the Plan Template. Click the **Clear Template** button to remove ALL courses from the grid.

[GPA Requirements](#)
[Course Plan Template](#)

**Course Plan Template Instructions**  
 This tool is used to associate a program with a Course Plan Template. Students assigned to this Course Plan Template will receive the courses selected below.

Calendar to select courses from: 17-18 High School Clear Template

Grade: 9 4.0 / 4.0	Grade: 10 3.0 / 4.0	Grade: 11 3.0 / 3.0	Grade: 12 0.0 / 9.0
<b>ENGLISH (0.5 / 2.0)</b>			
1.0 / 0.0	1.0 / 0.0	1.0 / 0.0	0.0 / 2.0
✕ E19525S1 English I Found S1 - 0.5 ✕ E19525S2 English I Found S2 - 0.5	✕ E29525S1 English II Found S1 - 0.5 ✕ E29525S2 English II Found S2 - 0.5 AIC9224S1 AICE Eng Lang AS S1 - 0.5 AIC9224S2 AICE Eng Lang AS S2 - 0.5 AIC9225S1 AICE Eng Lit AS S1 - 0.5 AIC9225S2 AICE Eng Lit AS S2 - 0.5 E19525ALS1 English I Found AL S1 - 0.5 E19525ALS2 English I Found AL S2 - 0.5 E1L9525S1 English I SB S1 - 0.5 E1L9525S2 English I SB S2 - 0.5 E2L9525S1 English II SB S1 - 0.5 E2L9525S2 English II SB S2 - 0.5	✕ E39525S1 English III Found S1 - 0.5 ✕ E39525S2 English III Found S2 - 0.5	Type to search or select courses
<b>MATHEMATICS (3.0 / 4.0)</b>			
1.0 / 1.0		1.0 / 1.0	0.0 / 1.0
✕ M1L9525S1 Mathematics I SB S1 - 0.5 ✕ M1L9525S2 Mathematics I SB S2 - 0.5		✕ M3L9525S1 Mathematics III SB S1 - 0.5 ✕ M3L9525S2 Mathematics III SB S2 - 0.5	Type to search or select courses

*Adding Courses to the Plan Template*