

# Outline Links

Last Modified on 08/27/2024 10:21 am CDT

**As of Release Pack .2339, this tool has been replaced by [Custom Tool Setup](#).**

[Creating Outline Links | Field Definitions](#)

Tool Search: Outline Links

The Outline Links tool allows shortcut links to be added within the Campus Index. These links can be used to allow staff access to commonly used websites, like the district website or help desk, state Department of Education, reporting interfaces, health tools, etc.

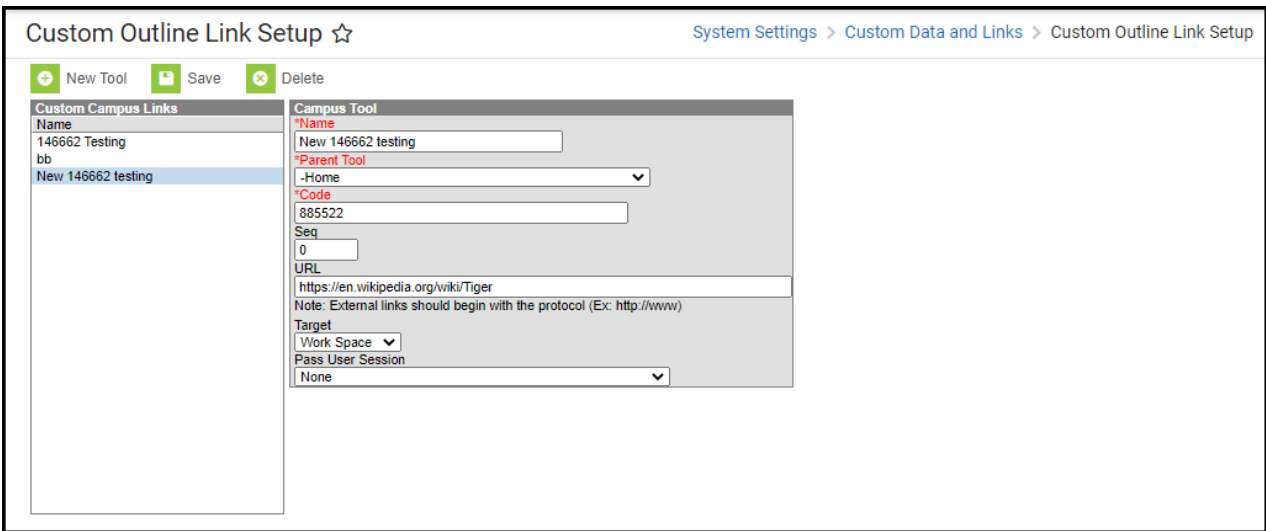


Image 1: Outline Links Tool

## Creating Outline Links

1. Select the **New Tool** icon from the action bar. The Campus Tool editor will display.
2. Enter information in the required **Name**, **Parent Tool**, and **Code** fields.
3. Enter information in the non-required fields, as necessary.
4. Click the **Save** icon to create the link.

In Classic Campus, the new Outline Link will NOT appear in the Campus Index until the user logs out and back into Infinite Campus. The outline link will appear to all district staff with appropriate tool rights for the Parent Tool location set.

For users using the New Look of Infinite Campus, you will need to designate a location for the new outline link using the New Tool Mapping feature of the [Custom Tool Placement Editor](#).

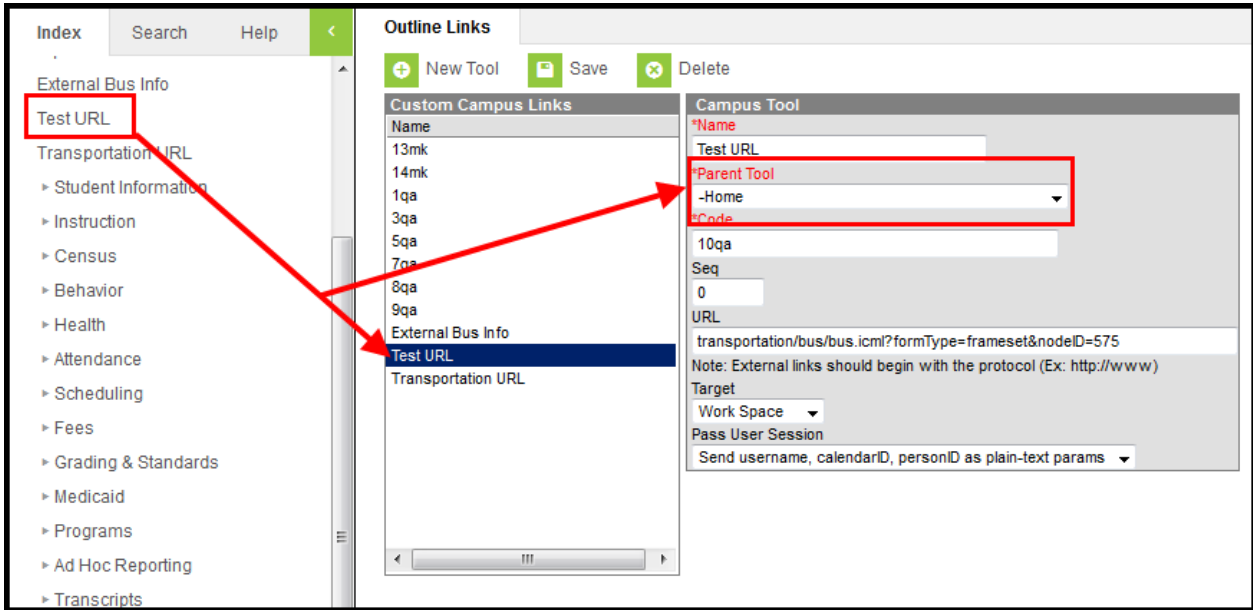


Image 2: Adding Outline Links

## Field Definitions

The fields of the Outline Link tool are defined as follows:

Field	Definition
Name	Name of the link to be displayed in the Index (up to 50 characters).
Parent Tool	The area within the Index where the link should be inserted. This list only displays parent Campus tools associated with the outline that are activated for the district.
Code	The alias/tooltip to appear when the user hovers the mouse over the link in the Index.
Seq	This field is for specifying the location of the Outline Link within the Index, as related to the tool selected from the Parent Tool dropdown list.  E.g., When “Student Information” is selected from the Parent Tool field, the value entered in the Seq(ue)nce field indicates the number of components (tools, folders, etc.) that should precede the Outline Link. A Seq(ue)nce value of 7 will set the Outline Link as the eighth component available in the Index under Student Information.
URL	The URL of the link’s website.  A link to an external URL must begin with the protocol ( <a href="http://www.website.com">http://www.website.com</a> rather than <a href="http://www.website.com">www.website.com</a> ). If an external URL does not begin with the protocol, it is assumed to be an internal link and an error message that the resource is not available will be shown when the link is accessed.

Field	Definition
Target	<p data-bbox="284 255 759 286">Indicates where the link should open.</p> <ul data-bbox="316 295 1059 362" style="list-style-type: none"> <li data-bbox="316 295 1034 327">• Work Space - The link will open within the work space</li> <li data-bbox="316 331 1059 362">• New Window - The URL to open in a new tab or window.</li> </ul> <div data-bbox="284 394 1430 517" style="background-color: #fff9c4; padding: 10px; margin: 10px 0;"> <p data-bbox="304 418 1394 488">Websites with a Content Security Policy which prohibits the use of their site within other sites will prevent the page from appearing (i.e., google.com, amazon.com, etc)</p> </div> <div data-bbox="284 551 1430 824" style="background-color: #e1f5fe; padding: 10px; margin: 10px 0;"> <p data-bbox="304 575 1310 645">Linking to an external resource (URL) poses some security risk and you will be warned about this risk if having them open in the Work Space.</p> <p data-bbox="304 689 1366 795">External resources are automatically added to your Content Security Policy. If a custom link is later deleted, the associated URL is automatically removed from the district's Content Security Policy.</p> </div>
Pass User Session	<p data-bbox="284 880 1414 947">This field makes it possible for other sites, particularly dedicated to custom reporting, to pass select Campus parameters in a URL.</p> <ul data-bbox="316 956 1423 1247" style="list-style-type: none"> <li data-bbox="316 956 1404 1023">• None -- This option is for inserting regular links when no Campus user sessions are passed to the link.</li> <li data-bbox="316 1028 1331 1095">• Send username, calendarID, personID as plain-text params -- Indicates these elements will be used to pass along the user info the link's site.</li> <li data-bbox="316 1099 1423 1247">• Encrypt url-encoded username, etc. -- Indicates that select user session parameters for a user logged into Campus should be passed to the link's site. These parameters added to the URL include personID, userID, username, calendarID, contextID, contextIDType and timeStamp.</li> </ul>