

Application Manager (POS 1.0)

Last Modified on 03/11/2024 8:44 am CDT

Point of Sale 1.0 has been deprecated as of 7/1/2023. Please see the [Migration Checklist \(POS 2.0\)](#).

Classic View: Point of Sale > Administration > Application Manager

Search Terms: Application Manager

The Application Manager contains a list of schools/sites where food services are offered. It also associates specific serving periods and menus to each site.

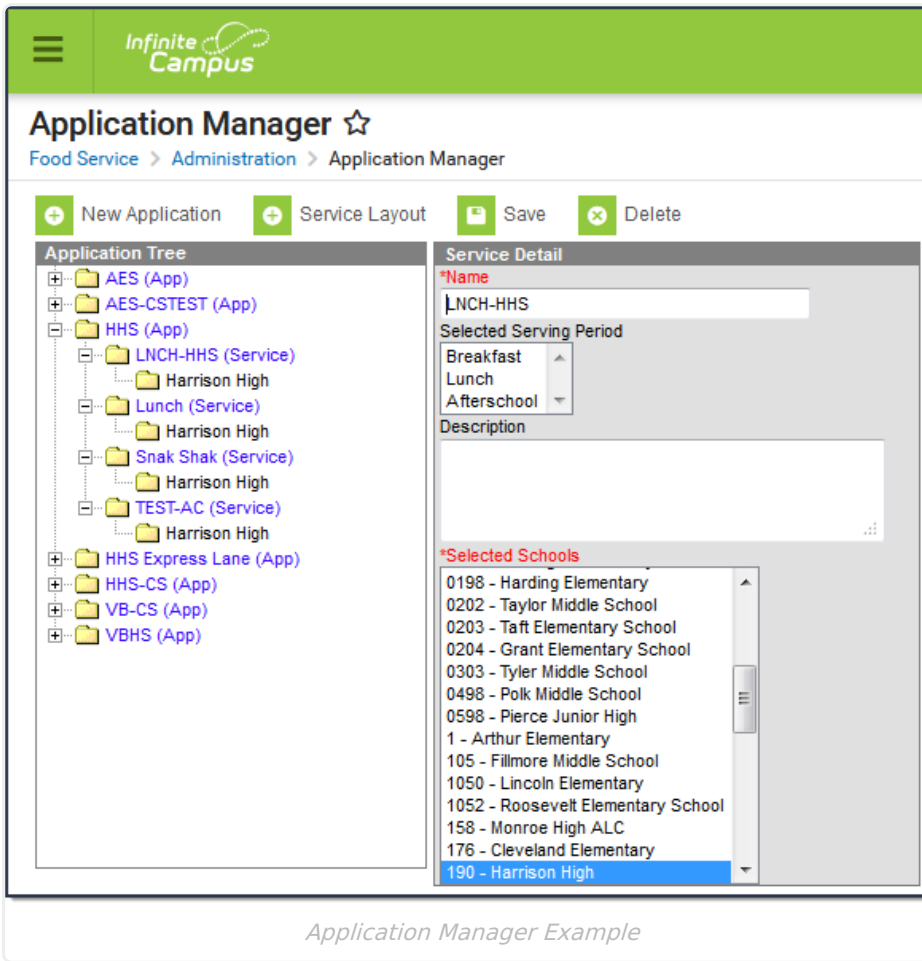
The Application Manager requires the following POS tools to be set up before it can be used: [Terminals](#), [Item Categories](#) and [Purchasable Items](#). Please also see the [Point of Sale Best Practices](#) for preferable setup of applications.

Deleting Unused Applications

You can delete unused Applications with services associated to them as long as no transactions have occurred. **If any Point of Sale terminals have been configured to the Application/Service, transaction data could be lost.**

Warning

You can use the Service Layout Copy Wizard to copy a Cafeteria Serve layout to another Cafeteria Serve layout. If you copy a non-Cafeteria Serve layout to a Cafeteria Serve layout, the layout will **NOT** display properly when the layout is opened in Cafeteria Serve.



Application Manager Example

Depending on the way food service transactions are processed in a district, one or more of the following setup methods are available.

Method	Description
Cafeteria Serve	This option allows for processing meal transactions without a Point of Sale Terminal. The menu layout is more limited; only 9 items may be added to one menu and button size is fixed. No cash accounting can be done with this form of service. This option may be used for all meal sales or may be created as a back up in case the Point of Sale Terminal(s) go down. This functionality is performed via the Cafeteria Serve tool.
Class Serve	This option is used when a meal, snack, or milk is served in the classroom during the day. The number of items available should be limited (1 or 2). The teacher of that course records in the Class Serve tool which students received what items. The cost of the item is deducted from the student's Point of Sale account balance.

Method	Description
POS Terminals	<p>This option must be used in conjunction with physical Point of Sale Terminals. This option allows for cash and checks to be used for payment of transactions with remaining change either deposited into the patron's account or given back as change. This option provides a greater amount of customization and functionality; up to 42 items are available on menus, button size may be changed, money may be deposited into a patron's account, etc. Point of Sale Terminals run separately from Campus. However, transactions, updated account balances, student information, etc is communicated between Campus and terminals in real-time (dependent upon an internet connection/server accessibility).</p>
