

Lockers (Admin)

Last Modified on 10/21/2024 8:19 am CDT

[Prepare to Enter Locker Data](#) | [Locker Maintenance and Student Locker Management](#) | [Generate Locker Related Reports](#) | [Locker Types and Lock Types](#)

Tool Search: Locker

Administrative tools available for the maintenance of student lockers include the ability to end student lockers, schedule student lockers and rotate locker combinations. Reports are also available that will print student locker assignments, a list of lockers not in use and students who do not have lockers assigned.

See the [Tool Rights](#) article for descriptions of tool rights for this area.

Prepare to Enter Locker Data

Topic	Tool
Create Locker Types	Custom Attribute/Dictionary
Create and define Locker Locations	Locker Location
Create and define Lockers using a padlock or no lock	Lockers
Create and define Lockers with a Built-in Lock	Lockers
Create and define Locks	Locks

Locker Maintenance and Student Locker Management

Topic	Tool
Apply new locker combinations	Combination Rotation Wizard
Assign a locker to a student	Student Lockers
Assigning or ending lockers to multiple students	Locker Schedule Wizard
End a locker assigned to a student	Student Lockers
Assign lockers to students in a course section	Teacher Lockers

Generate Locker Related Reports

Topic	Tool
Generate a report showing assigned locker combinations and locker sequence	Locker Assignments Report
Generate a report listing students without assigned lockers	Students Without Lockers Report
Generate a report of vacant lockers	Vacant Locker Report

Locker Types and Lock Types

Lockers Types need to be created before lockers, locks, locker assignments and any other locker management task can be completed. Lock Types already exist but can be added to if additional types of locks are needed.

Locker types allow users to group and identify lockers based on the locker use within the school. The creation of locker types is a two-part process:

- Part 1 - The attribute detail record needs to be reviewed for proper district use.
- Part 2 - The dictionary items, or types of lockers) need to be created.

Modifying the Campus Attribute Detail is an option for districts. The locker process will work without modification to this area.

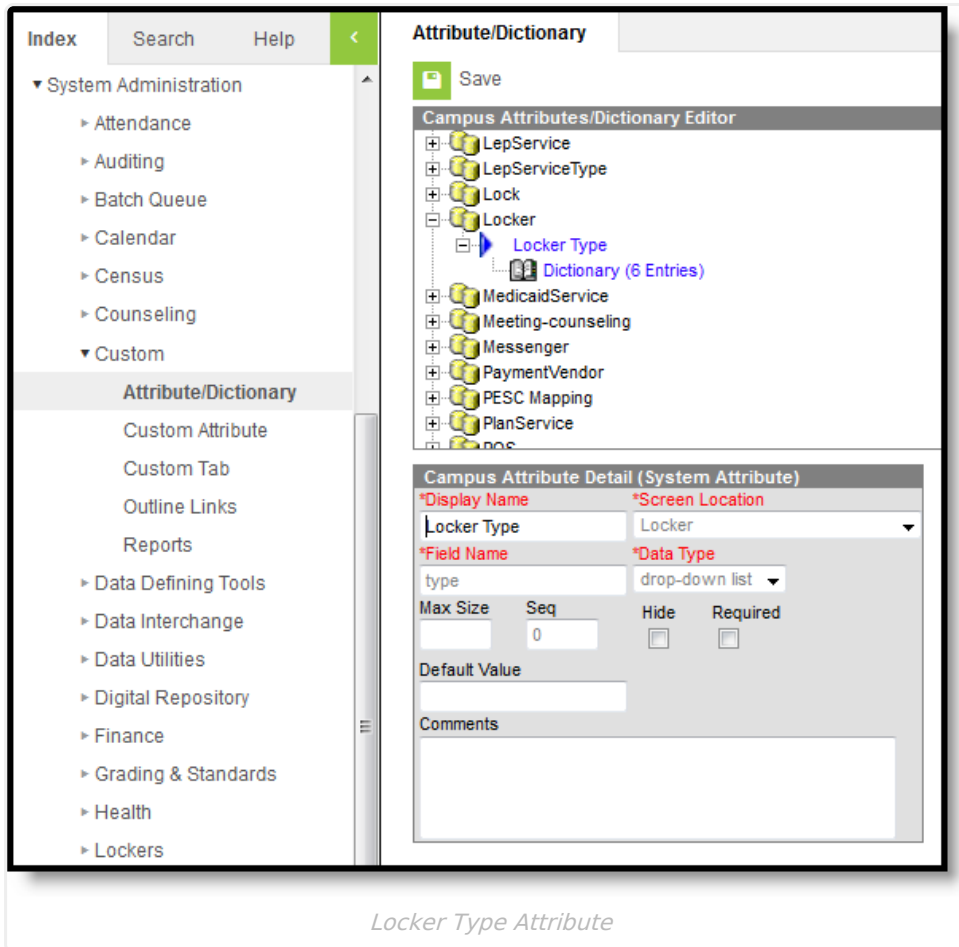
Locker types are used when finding lockers or when creating new lockers, and when generating locker reports.

Modify the Campus Attribute Detail for Lockers

Tool Search: Attribute/Dictionary

1. Locate to the **Locker** option in the Campus Attributes/Dictionary Editor.
2. Select the **Locker Type** item within the Campus Attribute Editor list. Required fields will be populated for use already - Display Name, Object, Element and Data Type. **Do not modify this information.**
3. Enter a **Default Value** for the Locker Type, if any. A value entered in this field is used in ad hoc reports and the database as an assumed value when the attribute is null (has not otherwise been edited).
4. Enter the **Max(imum) Size** of the attribute. This is the maximum number of characters allowed for this field.

5. Enter a **Seq(ue)n**ce) for the attribute. A value entered in this field orders the attribute as it relates to other fields used.
6. Determine if this item should be hidden, and mark the **Hide** checkbox accordingly. A checkbox in this field indicates it will not be displayed in the user interface on the tab.
7. Determine if this item is required entry for the user, and mark the **Required** checkbox accordingly. A checkbox in this field indicates a user must enter a value on the tab or the information cannot be saved.
8. Enter any **Comments** for this attribute as needed.
9. Click the **Save** icon when finished. The dictionary items can now be entered.



Add Locker Types

1. Expand the **Locker Type** attribute item by clicking on the plus sign next to Locker Type.
2. Select the **Dictionary** link. A **Dictionary Detail** table will appear.
3. Select the **Add Campus Dictionary** button. An additional row appears allowing for new locker type information to be entered.
4. Enter the locker **Code**. This code appears as a prefix describing the locker type for locker search results when using the Find locker search tool.
5. Enter the **Name** of the locker type. This name will describe the locker type and appear as the main identifier in all Locker Type dropdown lists.
6. Enter the **Sequence**. This is the order in which locker types appear within Locker Type dropdown lists.
7. **DO NOT enter values in the Value or Standard Code fields** . These items are not used

- for locker types and should be left blank.
8. Mark the **Active** checkbox. This will make the locker type active within the system and appear in Locker Type dropdown lists.
 9. Add additional items by selecting the **Add Campus Dictionary** button as often as needed.
 10. Click the **Save** icon when finished. Locker type values will be saved.

Locker Type Dictionary Detail

	Code	Name	Seq
X	AC	Activity	0
X	ED	Academic	0
X	FB	Football	0
X	IT	IT	0
X	MC	Music	0
X	PE	Phy Ed	0

Adding Custom Locker Types

The [Student Summary](#) tool displays Academic Locker information based on the code of ED assigned to the locker type. If this code is modified, locker information does not display on the Summary Tab.

Add Lock Types

Two lock types are already available in the Attribute Dictionary.

- BL - Built into Locker
- PD - Pad Lock

These lock types are assigned to locks and are used to track combinations for lockers. No additional lock types should be needed. If there is a situation where these two types do not meet the needs of the district, follow the procedures above for adding additional dictionary items.

