

Behavior (Pennsylvania)

Last Modified on 10/21/2024 8:19 am CDT

[Behavior Settings](#) | [Behavior Management](#) | [Behavior Referral](#)

Tool Search: Behavior

Behavior fields that are specific to the state of Pennsylvania are described below in the Behavior Setup, Behavior Management, and Behavior Referral sections. For all other inquiries, please visit the Behavior article.

Behavior Settings

Behavior Settings are used to setup behavior events/incidents, resolutions, and responses. Behavior Admin fields that are specific to the state of Pennsylvania are described below. For all other inquiries, please visit the [Behavior](#) article.

Event Types

Tool Search: Event Type Setup

The screenshot shows the 'Event Type Setup' interface. At the top, there are navigation links: 'Behavior Office > Settings > Event Type Setup'. Below this are action buttons: 'Save', 'Delete', 'New', 'Show History', and a dropdown for 'Active Event Types'. The main area is divided into two sections:

- Behavior Event Type Editor:** A table listing various event types with columns for Code, Name, Alignment, Start Date, and End Date. The 'Bullying' event type (Code B-1) is highlighted.
- Behavior Event Type Detail:** A form for editing the 'Bullying' event type. It includes fields for Code (B-1), Name (Bullying), Alignment (Discipline), Start Date (01/08/2008), End Date, and Classification (None). A red box highlights the 'State Event Code (Mapping)' dropdown menu, which is currently set to '(27) Bullying'.

Below the screenshot is the caption: *Behavior Event Type Detail Editor*

State Event Code (Mapping)

State Event Codes indicate the reason a student was subject to a disciplinary action. These are the official state codes to which all district-defined behavior events/incidents should be mapped. Behavior events/incidents that are not mapped to a state event code do NOT report.

Be sure to populate the Weapons Detected and Weapon Count fields if the State Event Code for a Behavior Incident is:

- 39: Possession of Handgun or,

- 40: Possession of Rifle/Shotgun or,
- 41: Possession of Other Firearm or,
- 42: Possession of Knife or,
- 43: Possession of Cutting Instrument or,
- 44: Possession of Explosive (Bomb, Missile, etc.) or,
- 45: Possession of BB/Pellet Gun or,
- 46: Possession of Other Weapon or,
- 54: Possession of Weapon

▶ [Click here to expand...](#)

Code	Description	Definition
1	Simple Assault on Student	The unlawful physical attack by one student upon another where neither the offender displays a weapon, nor the victim suffers obvious severe or aggravated bodily injury involving apparent broken bones, loss of teeth, possible internal injury, severe laceration or loss of consciousness.
2	Aggravated Assault on Student	<p>An unlawful attack by one person upon another in which the offender uses a weapon or displays it in a threatening manner, or the victim suffers obvious severe or aggravated bodily injury involving apparent broken bones, loss of teeth, possible internal injury, severe lacerations, or loss of consciousness. This also includes assault with disease (as in cases when the offender is aware that he/she is infected with a deadly disease) by biting, spitting, etc.</p> <p>Aggravated assault on a student is an unlawful attack by one student upon another. By definition there can be no attempted assaults, only completed assaults. The act should intentionally, knowingly, or recklessly cause bodily injury and/or serious bodily injury to a student(s).</p>
3	Simple Assault on Staff	An unlawful attack by one person upon another. By definition there can be no attempted assaults, only completed assaults. The act should be intentionally, knowingly, or recklessly causing bodily injury or serious bodily injury to an employee(s).

Code	Description	Definition
4	Aggravated Assault on Staff	<p>An unlawful attack by one person upon another in which the offender uses a weapon or displays it in a threatening manner, or the victim suffers obvious severe or aggravated bodily injury involving apparent broken bones, loss of teeth, possible internal injury, severe lacerations, or loss of consciousness. This also includes assault with disease (as in cases when the offender is aware that he/she is infected with a deadly disease) by biting, spitting, etc.</p> <p>A person is guilty of aggravated assault if he/she: Attempts to cause or intentionally or knowingly causes bodily injury to a teaching staff member, school board member or other employee, including a student employee, of any elementary or secondary publicly-funded educational institution, any elementary or secondary private school licensed by the Department of Education or any elementary or secondary parochial school while acting in the scope of his or her employment or because of his or her employment relationship to the school.</p>
5	Rape	<p>May be Forcible or Statutory.</p> <p><i>Forcible Rape:</i> Vaginal intercourse committed by force and without the consent of the victim, regardless of age.</p> <p><i>Statutory Rape:</i> Vaginal intercourse committed on a child under the age of 16 by a person who is at least 12 years old and at least 4 years older than the victim, regardless of whether the victim consented. Consensual vaginal intercourse between a 13, 14 or 15 year old girl or boy and a 16 year old girl or boy is not a crime; statutory rape requires at least four years between birthdays of the victim and perpetrator. Some examples of incidents which must be reported under this category are consensual intercourse between a 19-year old and a 15-year old; consensual intercourse with a person who is mentally handicapped or incapacitated, or physically helpless, regardless of whether the victim consented; or intercourse with an intoxicated or drugged victim who is too incapacitated to give consent.</p>

Code	Description	Definition
6	Involuntary Sexual Deviate Intercourse	<p>A person commits a felony of the first degree when the person engages in deviate sexual intercourse with a complainant: (1) by forcible compulsion; (2) by threat of forcible compulsion that would prevent resistance by a person of reasonable resolution; (3) who is unconscious or where the person knows that the complainant is unaware that the sexual intercourse is occurring; (4) where the person has substantially impaired the complainant's power to appraise or control his or her conduct by administering or employing, without the knowledge of the complainant, drugs, intoxicants or other means for the purpose of preventing resistance; (5) who suffers from mental disability which renders him or her incapable of consent; or (6) who is less than 16 years of age and the person is four or more years older than the complainant and the person are not married to each other.</p> <p><i>Involuntary Deviate Sexual Intercourse with a Child:</i> A person commits involuntary deviate sexual intercourse with a child, a felony of the first degree, when the person engages in deviate sexual intercourse with a complainant who is less than 13 years of age.</p> <p><i>Involuntary Deviate Sexual Intercourse with a Child with Serious Bodily Injury:</i> A person commits an offense under this section with a child resulting in serious bodily injury, a felony of the first degree, when the person violates this section and the complainant is less than 13 years of age and the complainant suffers serious bodily injury in the course of the offense.</p>
7	Statutory Sexual Assault	<p>A person commits a felony of the second degree when that person engages in sexual intercourse with a complainant under the age of 16 years and that person is four or more years older than the complainant and the complainant and the person are not married to each other.</p> <p>A person commits a felony of the first degree when that person engages in sexual intercourse with a complainant under the age of 16 years and that person is 11 or more years older than the complainant and the complainant and the person are not married to each other.</p>

Code	Description	Definition
8	Sexual Assault	Except as relating to rape or relating to involuntary deviate sexual intercourse, a person commits a felony of the second degree when that person engages in sexual intercourse or deviate sexual intercourse with a complainant without the complainant's consent.
9	Aggravated Indecent Assault	Except as relating to rape, relating to statutory sexual assault, relating to involuntary deviate sexual intercourse, and relating to sexual assault, a person who engages in penetration, however slight, of the genitals or anus of a complainant with a part of his person's body for any purpose other than good faith medical, hygienic or law enforcement procedures commits aggravated indecent assault if: (1) the person does so without the complainant's consent; (2) the person does so by forcible compulsion; (3) the person does so by threat of forcible compulsion that would prevent resistance by a person of reasonable resolution; (4) the complainant is unconscious or the person knows that the complainant is unaware that the penetration is occurring; (5) the person has substantially impaired the complainant's power to appraise or control his or her conduct by administering or employing, without the knowledge of the complainant, drugs, intoxicants or other means for the purpose of preventing resistance; (6) the complainant suffers from mental disability which renders him or her incapable of consent; (7) the complainant is less than 13 years of age; or (8) the complainant is less than 16 years of age and the person is four or more years older than the complainant and the person are not married to each other.
10	Indecent Assault	Committing a sexual act with or in the presence of a child under the age of 16 years, by a person at least age 16 and at least five years older than the child, for sexual gratification, regardless of whether force was used, or whether the victim consented. Examples of acts to be reported under this category are intentional exposure of genitals in front of a child; showing a child pornography, secretly or in the child's presence; or photographing girls changing clothes or using toilets, if these acts are done for sexual gratification.
11	Indecent Exposure	A person commits indecent exposure if that person exposes his or her genitals in any public place or in any place where there are present other persons under circumstances in which he or she knows or should know that this conduct is likely to offend, affront or alarm.

Code	Description	Definition
12	Open Lewdness	A person commits a misdemeanor of the third degree if he does any lewd act which he knows is likely to be observed by others who would be affronted or alarmed.
13	Obscene/sexual materials/performances	No person, knowing the obscene character of the materials or performances involved, shall: (1) display or cause or permit the display of any explicit sexual materials in or on any window, showcase, newsstand, display rack, billboard, display board, viewing screen, motion picture screen, marquee or similar place in such manner that the display is visible from any public street, highway, sidewalk, transportation facility or other public thoroughfare, or in any business or commercial establishment where minors, as a part of the general public or otherwise, are or will probably be exposed to view all or any part of such materials; (2) sell, lend, distribute, transmit, exhibit, give away or show any obscene materials to any person 18 years of age or older or offer to sell, lend, distribute, transmit, exhibit or give away or show, or have in his possession with intent to sell, lend, distribute, transmit, exhibit or give away or show any obscene materials to any person 18 years of age or older, or knowingly advertise any obscene materials in any manner; (3) design, copy, draw, photograph, print, utter, publish or in any manner manufacture or prepare any obscene materials; (4) write, print, publish, utter or cause to be written, printed, published or uttered any advertisement or notice of any kind giving information, directly or indirectly, stating or purporting to state where, how, from whom, or by what means any obscene materials can be purchased, obtained or had; (5) produce, present or direct any obscene performance or participate in a portion thereof that is obscene or that contributes to its obscenity; (6) hire, employ, use or permit any minor child to do or assist in doing any act or thing mentioned in this subsection; (7) knowingly take or deliver in any manner any obscene material into a State correctional institution, county prison, regional prison facility or any other type of correctional facility; (8) possess any obscene material while such person is an inmate of any State correctional institution, county prison, regional prison facility or any other type of correctional facility; or (9) knowingly permit any obscene material to enter any State correctional institution, county prison, regional prison facility or any other type of correctional facility if such person is a prison guard or other employee of any correctional facility described in this paragraph.

Code	Description	Definition
14	Sexual Harassment	<p>(Crime Against a Person): Discrimination against a student based on the student’s submission or rejection of sexual advances and/or requests or creating an atmosphere of harassment based on sexual issues/activity. The unwelcome sexual advances, requests for sexual favors, other physical or verbal conduct or communication of a sexual nature, and any other gender based harassment which has the purpose or effect to interfere with the individual performance, work environment, or participation in school sponsored activities, or creates an intimidating, hostile, or offensive educational environment. This includes students and staff. Examples include behaviors such as leering, pinching, grabbing, suggestive comments, gestures, jokes or pressure to engage in sexual activity.</p>
15	Racial/Ethnic Intimidation	<p>Malicious intent toward another person or property based on race, color, religion or national origin is a hate crime.</p> <p>A person commits the offense of <i>ethnic intimidation</i> if, with malicious intention towards the actual or perceived race, color, religion, national origin, ancestry, mental or physical disability, sexual orientation, gender or gender identity of another individual or group of individuals, he/she commits an offense with respect to such individual or his or her property or with respect to one or more members of such group or to their property</p>
16	All Other Forms of Harassment/Intimidation	<p>Threatening or Intimidating a School Official or a Student (Crime Against a Person): To unlawfully place another person in fear of bodily harm through threats or intimidation (physical, verbal, written, or electronic (e.g., internet) without displaying a weapon or subjecting the person to actual physical attack; stalking (i.e., secretly or stealthily pursuing another, spying on or watching another person, with or without the intent to harm, frighten, or coerce) should be included.</p>

Code	Description	Definition
17	Fighting	(Mutual Altercation): A student confrontation with another student in which the altercation is mutual, requiring physical restraint or resulting in injury or property damage. If the incident does not rise to that level, the incident should be classified as minor disruptive behavior or a minor infraction. Mutual participation in a fight involving physical violence, where there is no one main offender and no major injury. This does not include verbal confrontations, tussles or other minor confrontations. Law enforcement officers may refer this offense as simple assault. Administrators need to consider age and developmentally appropriate behavior before using this category.
18	Minor Altercation	An incident which involves a single offender who commits a minor violent act against another individual and the other individual does not respond and the incident does not elevate to a more severe type of incident such as a fight or assault (e.g., "Student A" strikes "Student B" resulting in little injury and the "Student B" does not retaliate).
19	Stalking	A person commits the crime of stalking when the person either: (1) engages in a course of conduct or repeatedly commits acts towards another person, including following the person without proper authority, under circumstances which demonstrate either an intent to place such other person in reasonable fear of bodily injury or to cause substantial emotional distress to such other person; or (2) engages in a course of conduct or repeatedly communicates to another person under circumstances which demonstrate or communicate either intent to place such other person in reasonable fear of bodily injury or to cause substantial emotional distress to such other person.
20	Kidnapping/Interference with Custody of Child	(Crime Against a Person): The removal, restraining or confinement of an individual by another through force, threat, or deception or (if person is under 14 years) without consent of a parent, guardian or school. Kidnapping/abduction includes hostage taking. A parent taking a child in violation of a court order, although it may be a crime, is not kidnapping for this purpose.
21	Unlawful Restraint	When someone restrains another unlawfully in circumstances that could expose the restrained to serious bodily injury or if the restrained is held in involuntary servitude.

Code	Description	Definition
22	Threatening School Official/Student	Threatening or Intimidating a School Official or a Student (Crime Against a Person): To unlawfully place another person in fear of bodily harm through threats or intimidation (physical, verbal, written, or electronic (e.g., internet)) without displaying a weapon or subjecting the person to actual physical attack; stalking (i.e., secretly or stealthily pursuing another, spying on or watching another person, with or without the intent to harm, frighten, or coerce) should be included.
23	Reckless Endangering Another Person	Recklessly Endangering Another Person: A person commits a misdemeanor of the second degree if he/she recklessly engages in conduct which places or may place another person in danger of death or serious bodily injury.
24	Robbery	<p>(Crime Against a Person): The taking, or attempting to take, anything of value under confrontational circumstances from the control, custody or care of another person by force or threat of force or violence and/or by putting the victim in fear of immediate harm. Because some type of assault may be an element of the crime of robbery, an assault should not be reported as an assault as long as it was performed in furtherance of the robbery. However, if the injury resulted in death, the incident must be reported as a homicide. A carjacking is a robbery offense where a motor vehicle is taken into force or threat of force.</p> <p><i>Robbery with a Dangerous Weapon (Armed Robbery):</i> Theft or attempted theft of anything of value from the person of another, or from the area under the immediate bodily control of the other, by using a dangerous weapon or by an act threatening use of a dangerous weapon. A dangerous weapon is any article, instrument or substance that is likely to produce death or great bodily harm. Forcible theft or attempted theft from a person without the use of a dangerous weapon should be reported under Robbery without a Dangerous Weapon.</p> <p><i>Robbery without a Dangerous Weapon:</i> The taking or attempting to take anything of value from another person, by force, or by an act threatening force or violence, which puts a victim in fear, without the use of a weapon. The stealing of someone's property without the use of force or from a source other than the victim's person is not included in this offense. If the taking from the person involves use of a dangerous weapon the incident is reported under Robbery with a Dangerous Weapon.</p>

Code	Description	Definition
25	Theft and Related Offenses	<p>Theft by unlawful taking or disposition.</p> <p><i>Movable Property:</i> A person is guilty of theft if he unlawfully takes, or exercises unlawful control over, Movable Property of another with intent to deprive him thereof.</p> <p><i>Immovable Property:</i> A person is guilty of theft if he unlawfully transfers, or exercises unlawful control over, immovable property of another or any interest therein with intent to benefit himself or another not entitled thereto.</p>
26	Crimes Related to Criminal Homicide	<p>Homicide (Crime Against a Person) (Murder or Manslaughter): Occurs when a person intentionally, knowingly, recklessly, or negligently causes the death of a human being. Homicide is classified as murder, voluntary manslaughter, or involuntary manslaughter.</p>
27	Bullying	<p>By law, "bullying" shall mean an intentional electronic, written, verbal or physical act, or a series of acts: directed at another student or students, which occurs in a school setting, that is severe, persistent or pervasive, and that has the effect of doing any of the following: substantially interfering with a student's education, creating a threatening environment, or substantially disrupting the orderly operation of the school. School setting shall mean in the school, on school grounds, in school vehicles, at a designated bus stop or at any activity sponsored, supervise or sanctioned by the school.</p> <p>The term bullying should not be used when there is a mutual confrontation between two students or groups of students. Behavior is clearly bullying when: (1) there is intent to harm. The perpetrator appears to find pleasure in taunting and continues even when the target's distress is obvious. Mutual "teasing" should not be confused with bullying behavior. (2) There is intensity and duration - the taunting continues over a period of time, and is not welcomed by the target.</p>
28	Suicide - Attempted	<p>An undertaking to deliberately take one's own life that entails more than mere preparation but does not result in the successful completion of the act.</p>
29	Suicide - Committed	<p>The deliberate taking of one's own life.</p>

Code	Description	Definition
30	Burglary	(Crimes Against Property): The unlawful entry into a building or other structure with the intent to commit a felony or theft. It is not necessary that force be used in gaining entry, neither is it necessary that property loss occur. Attempts to unlawfully enter a structure without expressed permission are also counted in this category.
31	Arson and Related Offenses	The unlawful and intentional damage or attempt to damage any real or personal property by fire or incendiary device. Setting a fire (by match, lighter, fireworks, firecrackers, trashcan fires, Molotov cocktails, or any other incendiary device) providing aid, counsel or pay toward same. This category does not include a simple act of lighting a match.
32	Vandalism	The unlawful desecration of a building or other structure with the intent to commit damage.
33	Criminal Trespass	A person commits an offense if, knowing that he/she is not licensed or privileged to do so, he/she: enters, gains entry by subterfuge or surreptitiously remains in any building or occupied structure or separately secured or occupied portion thereof; OR (ii) breaks into any building or occupied structure or separately secured or occupied portion thereof.
34	Rioting	A person is guilty of riot, a felony of the third degree, if he/she participates with two or more others in a course of disorderly conduct: (1) with the intent to commit or facilitate the commission of a felony or misdemeanor; (2) with intent to prevent or coerce official action; (3) when the actor or any other participant to the knowledge of the actor uses or plans to use a firearm or other deadly weapon.
35	Bomb Threats	A person commits the crime of terroristic threats if the person communicates, either directly or indirectly, a threat to: (1) commit any crime of violence with intent to terrorize another; (2) cause evacuation of a building, place of assembly or facility of public transportation; or (3) otherwise cause serious public inconvenience, or cause terror or serious public inconvenience with reckless disregard of the risk of causing such terror or inconvenience. The term "communicates" means, conveys in person or by written or electronic means, including telephone, electronic mail, Internet, facsimile, telex and similar transmissions.

Code	Description	Definition
36	Terroristic Threats (excl bomb threats)	A person commits the crime of terroristic threats if the person communicates, either directly or indirectly, a threat to: (1) commit any crime of violence with intent to terrorize another; (2) cause evacuation of a building, place of assembly or facility of public transportation; or (3) otherwise cause serious public inconvenience, or cause terror or serious public inconvenience with reckless disregard of the risk of causing such terror or inconvenience. The term “communicates” means, conveys in person or by written or electronic means, including telephone, electronic mail, Internet, facsimile, telex and similar transmissions.
37	Failure of Disorderly Persons to Disperse	Where three or more persons are participating in a course of disorderly conduct which causes or may reasonably be expected to cause substantial harm or serious inconvenience, annoyance or alarm, a peace officer or other public servant engaged in executing or enforcing the law may order the participants and others in the immediate vicinity to disperse.
38	Disorderly Conduct	A person is guilty of disorderly conduct if, with intent to cause public inconvenience, annoyance or alarm, or recklessly creating a risk thereof, he/she: (1) engages in fighting or threatening, or in violent or tumultuous behavior; (2) makes unreasonable noise; (3) uses obscene language, or makes an obscene gesture; or (4) creates a hazardous or physically offensive condition by any act which serves no legitimate purpose of the actor.
39	Possession of Handgun	Possession of Handgun on School Property: A person commits a misdemeanor of the first degree if he possesses a weapon in the buildings of, on the grounds of, or in any conveyance providing transportation to and from any elementary or secondary publicly-funded educational institution, any elementary or secondary private school licensed by the Department of Education or any elementary or secondary parochial school.
40	Possession of Rifle/Shotgun	Possession of Rifle/Shotgun on School Property: A person commits a misdemeanor of the first degree if he possesses a weapon in the buildings of, on the grounds of, or in any conveyance providing transportation to and from any elementary or secondary publicly-funded educational institution, any elementary or secondary private school licensed by the Department of Education or any elementary or secondary parochial school.

Code	Description	Definition
41	Possession of Other Firearm	Possession of Other Firearm on School Property: A person commits a misdemeanor of the first degree if he possesses a weapon in the buildings of, on the grounds of, or in any conveyance providing transportation to and from any elementary or secondary publicly-funded educational institution, any elementary or secondary private school licensed by the Department of Education or any elementary or secondary parochial school.
42	Possession of Knife	Possession of Knife on School Property: A person commits a misdemeanor of the first degree if he possesses a weapon in the buildings of, on the grounds of, or in any conveyance providing transportation to and from any elementary or secondary publicly-funded educational institution, any elementary or secondary private school licensed by the Department of Education or any elementary or secondary parochial school.
43	Possession of Cutting Instrument	Possession of Cutting Instrument on School Property: A person commits a misdemeanor of the first degree if he possesses a weapon in the buildings of, on the grounds of, or in any conveyance providing transportation to and from any elementary or secondary publicly-funded educational institution, any elementary or secondary private school licensed by the Department of Education or any elementary or secondary parochial school.
44	Possession of Explosive (Bomb, Missile, etc.)	Possession of Explosive or Incendiary Materials or Devices: A person commits a felony of the third degree, if he possesses, manufactures or transports any incendiary or explosive material with the intent to use or to provide such device or material to commit any offense described as Arson Endangering Persons, Arson Endangering Property, or Reckless Burning or Exploding.
45	Possession of BB/Pellet Gun	Possession of BB/Pellet Gun on School Property: A person commits a misdemeanor of the first degree if he possesses a weapon in the buildings of, on the grounds of, or in any conveyance providing transportation to and from any elementary or secondary publicly-funded educational institution, any elementary or secondary private school licensed by the Department of Education or any elementary or secondary parochial school.

Code	Description	Definition
46	Possession of Other Weapon	Possession of Other Weapon on School Property: A person commits a misdemeanor of the first degree if he possesses a weapon in the buildings of, on the grounds of, or in any conveyance providing transportation to and from any elementary or secondary publicly-funded educational institution, any elementary or secondary private school licensed by the Department of Education or any elementary or secondary parochial school.
54	Possession of Weapon	Includes all types of weapons - handguns, rifles, knives, etc. A person commits a misdemeanor of the first degree if he possesses a weapon in the buildings of, on the grounds of, or in any conveyance providing transportation to and from any elementary or secondary publicly-funded educational institution, any elementary or secondary private school licensed by the Department of Education or any elementary or secondary parochial school.
AI	Academic Incident	A specific act or offense involving one or more victims and one or more offenders. A reportable incident includes one or more acts of misconduct, involving one or more offenders. These include but are not limited to any behavior that violates a school’s educational mission or climate of respect or jeopardizes the intent of the school to be free of aggression against persons or property, drugs, weapons, disruptions, and disorder. Examples are incidents involving acts of violence, possession of a weapon, or the possession, use or sale of a controlled substance: alcohol, or tobacco by any person on school property; at school-sponsored events; and on school transportation to and from school. The “Misconduct Definitions” provides a listing and definition of all reportable incidents.
CI	Conduct Incident	A specific act or offense involving one or more victims and one or more offenders. A reportable incident includes one or more acts of misconduct, involving one or more offenders violating criteria. These include but are not limited to any behavior that violates a school’s educational mission or climate of respect or jeopardizes the intent of the school to be free of aggression against persons or property, drugs, weapons, disruptions, and disorder. Examples are incidents involving acts of violence, possession of a weapon, or the possession, use or sale of a controlled substance, alcohol, or tobacco by any person on school property; at school-sponsored events; and on school transportation to and from school. The “Misconduct Definitions” provides a listing and definition of all reportable incidents.

Database Location:

BehaviorType.stateEventCode

Ad Hoc Inquiries:

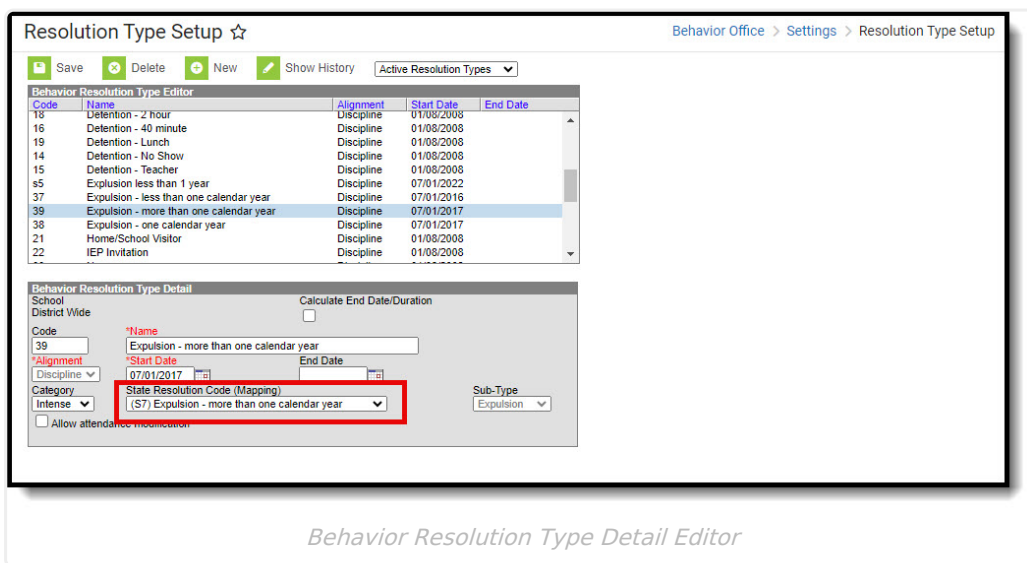
Student > Behavior > Behavior Event > stateEventCode

Reports:

- PIMS Incident Offender Disciplinary Action Template
- PIMS Incident Offender Infraction Template
- PIMS Incident Offender Infraction Weapon Template
- PIMS Incident Offender Parent Involvement
- PIMS Incident Offender Template
- PIMS Incident Victim Template
- PIMS Location Annual Fact Template
- PIMS Person Template
- PIMS Incident Template

Resolution Types

Tool Search: Resolution Type Setup



State Resolution Code (Mapping)

State Resolution Codes indicate the type of disciplinary action taken for a student. These are the official state codes to which all district-defined behavior resolutions should be mapped. Behavior resolutions that are not mapped to a state event code do NOT report. For more information on these codes, see the Pennsylvania Information Management System (PIMS) manual.

▶ [Click here to expand...](#)

Code	Description	Notes
R1	Alternative Education	Codes R1 - R9 are used if the offender is referred to, or participating in, remedial programs
R2	Homebound Instruction	Codes R1 - R9 are used if the offender is referred to, or participating in, remedial programs
R3	Student Assistance Referral	Codes R1 - R9 are used if the offender is referred to, or participating in, remedial programs
R4	Drug / Alcohol Counseling	Codes R1 - R9 are used if the offender is referred to, or participating in, remedial programs
R5	Guidance Counseling	Codes R1 - R9 are used if the offender is referred to, or participating in, remedial programs
R6	Psychological Evaluation	Codes R1 - R9 are used if the offender is referred to, or participating in, remedial programs
R7	Peer Mediation / Conflict Resolution	Codes R1 - R9 are used if the offender is referred to, or participating in, remedial programs
R8	Anger Management	Codes R1 - R9 are used if the offender is referred to, or participating in, remedial programs
R9	Other	Codes R1 - R9 are used if the offender is referred to, or participating in, remedial programs
S1	None	Each known offender should have one, and only one, sanction record in this template identifying the "highest" or most severe sanction (Disciplinary Action Codes between S1 and S10)
S10	Other	Each known offender should have one, and only one, sanction record in this template identifying the "highest" or most severe sanction (Disciplinary Action Codes between S1 and S10)
S2	Detention	Each known offender should have one, and only one, sanction record in this template identifying the "highest" or most severe sanction (Disciplinary Action Codes between S1 and S10)
S3	In school suspension	Each known offender should have one, and only one, sanction record in this template identifying the "highest" or most severe sanction (Disciplinary Action Codes between S1 and S10)
S4	Out of school suspension	Each known offender should have one, and only one, sanction record in this template identifying the "highest" or most severe sanction (Disciplinary Action Codes between S1 and S10)

Code	Description	Notes
S5	Expulsion - less than one calendar year	Each known offender should have one, and only one, sanction record in this template identifying the “highest” or most severe sanction (Disciplinary Action Codes between S1 and S10)
S6	Expulsion - one calendar year	Each known offender should have one, and only one, sanction record in this template identifying the “highest” or most severe sanction (Disciplinary Action Codes between S1 and S10)
S7	Expulsion - more than one calendar year	Each known offender should have one, and only one, sanction record in this template identifying the “highest” or most severe sanction (Disciplinary Action Codes between S1 and S10)
S8	Sp education student removed by school prsnl	Each known offender should have one, and only one, sanction record in this template identifying the “highest” or most severe sanction (Disciplinary Action Codes between S1 and S10)
S9	Sp education student removed by hearing off	Each known offender should have one, and only one, sanction record in this template identifying the “highest” or most severe sanction (Disciplinary Action Codes between S1 and S10)

Database Location:

BehaviorResType.stateResCode

Ad Hoc Inquiries:

Student > Behavior > Behavior Resolution > stateResCode

Reports:

- [PIMS Incident Offender Disciplinary Action Template](#)
- [PIMS Incident Offender Parent Involvement](#)
- [PIMS Location Annual Fact Template](#)

Behavior Management

Tool Search: Behavior Management

Behavior Management fields that are specific to the state of Pennsylvania are described below. For all other inquiries, please visit the [Behavior Management](#) article.

Behavior Management ☆ Behavior Office > Behavior Management > Behavior Management

Save Delete New

Status Filter: Submitted/In-Progress Alignment Filter: Discipline/Award

Title	Date/Time	Incident Place Code	Incident Time Frame Code	Submitted By	Status	Locked
ARICK - PA Testing	07/08/2024 8:01 AM			John, Lynn	IP	
Disruptive Behavior 9/28	09/29/2023 3:09 PM	On school property/grounds	During school hours	John, Lynn	IP	
Out of Assigned area/class cut	09/29/2023 1:12 PM	On school property/grounds	During school hours	John, Lynn	SB	
Class Cut	09/29/2023 6:57 AM		During school hours	John, Lynn	SB	
Class Cut	09/28/2023 4:33 PM		During school hours	John, Lynn	SB	
Halls - Walking the	09/28/2023 4:31 PM		During school hours	John, Lynn	SB	
Halls - skipping class	09/28/2023 4:26 PM	On school property/grounds	During school hours	John, Lynn	SB	
Walk Out - J.K.	09/28/2023 4:19 PM	On school property/grounds	During school hours	John, Lynn	SB	

Incident Detail Information

This section stores information specific to the incident and will be shared on the behavior tab of each participant. Add Event/Participant and Add Resolution buttons will not be enabled until all required fields are filled.

Incident ID: 440137 Status: Submitted Submitted Date: 09/29/2023 01:16 PM Submitted By: John, Lynn

*Alignment: Discipline Title: Out of Assigned area/class cut

*Date of Incident: 09/29/2023 Time of Incident: 01:12 PM Damages: \$ 0.00

Incident Time Frame Code: 2: During school hours Context Description: Out of assigned area/skipping

Incident Place Code: 1: On school property/grounds Location Description: Room 276

Details: Student walked into the classroom and after the sub took attendance, the student left. The student did not return to class. When confronted during lunch, the student admitting to skipping because he thought the sub was staying the entire class period.

Events and Participants

This section will store event and participant information. Event Details will be shared across participants. Participant Details will only be displayed on that person's behavior tab. Review Participants

Disruptive Behavior (8) (Event ID: 447818) - Offender

Add Event/Participant Add Resolution Add Behavior Response

Modified by: John, Lynn 09/29/2023 13:16

Behavior Incident Detail Editor

Incident Time Frame Code

The time at which the incident occurred.

To ensure proper reporting, if **Incident Place Code** is *1:On school property/grounds*, an Incident Time Frame Code is **REQUIRED**.

▶ [Click here to expand...](#)

Database Location:

BehaviorIncident.location

Ad Hoc Inquiries:

Student > Behavior > Behavior Incident > location

Reports:

[PIMS Incident Template](#)

Incident Place Code

The place of occurrence of the incident.

To ensure proper reporting, if **Incident Place Code** is *1:On school property/grounds*, an **Incident Time Frame Code** is REQUIRED.

▶ [Click here to expand...](#)

Code	Description	Definition
1	On school property/grounds	On school property/grounds (e.g., school building, athletic fields)
2	At offsite alternative placement facility	At an offsite alternative placement facility
3	School event/within school jurisdiction	At a school-sponsored event or at an event within the school's jurisdiction (e.g., athletic competition)
4	Off school grounds-jurisdiction other school	Off school grounds at an activity under the jurisdiction of another school (e.g., another school's play)
5	Off school grounds-event sponsored by school	Off school grounds at an activity, function or event sponsored by the school (e.g., visit to a museum)
6	On dist. provided transportation to/from school	On district provided public conveyance providing transportation to and from school
7	On dist. provided transportation to school event	On district provided public conveyance providing transportation to a school (sponsored activity, event, or function)
8	Off school grounds while en route to/from school	Off School grounds while en route to or from school
9	Internet/Online	Internet/Online

Database Location:

BehaviorEvent.location

Ad Hoc Inquiries:

Student > Behavior > Behavior Deactivated > locationClassifier_dep

Behavior Management Participant Fields

Behavior Management Participant fields that are specific to the state of Pennsylvania are

described below. For all other inquiries, see how to [Add Participants to a Behavior Incident](#).

Participant(s) Details

ADAM STUDENT (Uncheck to exclude participant.)
 Display on Portal

Role:	Demerits	*Relationship to School	
Offender	0	1: Student	

*Injury	Injury Description	Medical Service Provided:
1: No Injury		<input type="checkbox"/>

Details:

Weapons Detected
Weapons Detected Comment
Weapon Count
0

*Weapon	Weapon Description
3: Knife	

Behavior Participant Detail Editor

Weapons Detected

A description of how the weapons involved in the incident for the offender were detected.

This field is **REQUIRED** if the Behavior Event State Code is:

- 39: Possession of Handgun or,
- 40: Possession of Rifle/Shotgun or,
- 41: Possession of Other Firearm or,
- 42: Possession of Knife or,
- 43: Possession of Cutting Instrument or,
- 44: Possession of Explosive (Bomb, Missile, etc.) or,
- 45: Possession of BB/Pellet Gun or,
- 46: Possession of Other Weapon or,
- 54: Possession of Weapon

▶ [Click here to expand...](#)

Database Location:

Student > Behavior > Behavior Role > weaponsDetected

Reports:

[PIMS Incident Offender Template](#)

Weapons Detected Comment

A comment describing the detection of a weapon(s). Ex: Knife found outside school property.

To ensure proper reporting, a Weapons Detected Comment is REQUIRED if the **Weapons Detected** field is *5: Other*.

▶ [Click here to expand...](#)

Database Location:

BehaviorRole.weaponsDetectedComment

Reports:

[PIMS Incident Offender Template](#)

Weapon Count

If weapons were involved, specify the total number of weapons for this offender, for this incident, and the INFRACTION CODE.

This field is REQUIRED if the Behavior Event State Code is:

- 39: Possession of Handgun or,
- 40: Possession of Rifle/Shotgun or,
- 41: Possession of Other Firearm or,
- 42: Possession of Knife or,
- 43: Possession of Cutting Instrument or,
- 44: Possession of Explosive (Bomb, Missile, etc.) or,
- 45: Possession of BB/Pellet Gun or,
- 46: Possession of Other Weapon or,
- 54: Possession of Weapon

▶ [Click here to expand...](#)

Database Location:

BehaviorRole.weaponCount

Reports:

- [PIMS Incident Offender Infraction Template](#)
- [PIMS Incident Offender Infraction Weapon Template](#)

Behavior Resolution Fields

Behavior Management Resolution fields that are specific to the state of Pennsylvania are described below. For all other inquiries, see how to [Add a Behavior Resolution](#) article.

Add Resolution

Resolution Details

*Resolution Type: 30: Suspension - OSS - .5 to 3 days

State Code: S4: (S4) Out of school suspension Category: Minor

*Resolution Assign Date: 01/22/2020 Resolution Start Date: 01/22/2020 Resolution Start Time: 10:46 AM Resolution End Date: Resolution End Time:

Duration in School Days:

Behavior Admin Staff Name:

Details:

Arrest Code

Alt. Ed Assignment and Services

Adjudication Code

Student Assistance Program

Law Enforcement Involved

LLE Office

Parent Code

Select Values

Parent Comment

Behavior Resolution Detail Editor

Arrest Code

An indicator of whether the offender was arrested for this incident. Please note that removal of student by police does not constitute an arrest. There will be many situations in which law enforcement takes a student into custody but will not initiate criminal charges against the student.

To ensure proper reporting, an Adjudication Code is Required if the Arrest Code is:

- YW: Arrested for Weapons Violation *OR*
- YN : Arrested not for weapons

▶ [Click here to expand...](#)

Database Location:

BehaviorResolution.remvalReason2

Reports:

[PIMS Incident Offender Template](#)

Alt. Ed Assignment and Services

This field indicates whether if the student was assigned to alternative education for this incident.

This field is **REQUIRED** if the State Resolution Code is:

- S5: Expulsion - less than one calendar year or,
- S6: Expulsion - one calendar year or,
- S7: Expulsion - more than one calendar year

[▶ Click here to expand...](#)

Database Location:

BehaviorResolution.serviceProvided

Ad Hoc Inquiries:

Student > Behavior > Behavior Resolution > serviceProvided

Reports:

- [PIMS Incident Offender Disciplinary Action Template](#)
- [PIMS Incident Offender Template](#)

Adjudication Code

The type of adjudication of the offender for this incident.

To ensure proper reporting, you **MUST** select an Adjudication Code if the Arrest Code is:

- YW: Arrested for Weapons Violation *OR*
- YN : Arrested not for weapons

[▶ Click here to expand...](#)

Database Location:

BehaviorResolution.hearingCode

Ad Hoc Inquiries:

behaviorDetail.hearingCode

Reports:

[PIMS Incident Offender Template](#)

Student Assistance Program

Indicates whether the student received educational services during expulsion.

▶ [Click here to expand...](#)

Database Location:

CustomBehaviorResolution.value

Ad Hoc Inquiries:

Student > Behavior > Custom BehaviorResolution > studentAssistanceProgram

Reports:

[PIMS Incident Victim Template](#)

Law Enforcement Involved

The Law Enforcement Involved field specifies if local law enforcement was contacted regarding this offender and incident.

You **MUST** enter a LLE Office contact if the Law Enforcement Involved selection is:

- 2: Law Enforcement notified, arrested unknown or,
- 3: Law Enforcement notified, not arrested or,
- 4: Law Enforcement notified, arrest pending or,
- 5: Law Enforcement notified, arrested or,
- 6: Law Enforcement notified, charges filed

[▶ Click here to expand...](#)

Database Location:

BehaviorResolution.lawEnforcement

Ad Hoc Inquiries:

Student > Behavior > Behavior Resolution > lawEnforcement

Reports:

[PIMS Incident Offender Template](#)

LLE Office

The name of the local law enforcement office contacted regarding this offender and incident.

To ensure proper reporting, the LLE Office contact field **MUST** be populated if the Law Enforcement Involved Code is:

- 2: Law Enforcement notified, arrested unknown or,
- 3: Law Enforcement notified, not arrested or,
- 4: Law Enforcement notified, arrest pending or,
- 5: Law Enforcement notified, arrested or,
- 6: Law Enforcement notified, charges filed

[▶ Click here to expand...](#)

Database Location:

BehaviorResolution.lawContactName

Reports:

[PIMS Incident Offender Template](#)

Parent Code

The code of the parental involvement type for the offender and incident.

To ensure proper reporting, users **MUST** enter a **Parent Comment** if the **Parent Code** is **6**:

Other.

▶ [Click here to expand...](#)

Database Location:

CustomBehaviorResolution.value

Ad Hoc Inquiries:

Student > Behavior > Custom BehaviorResolution > parentCode

Reports:

[PIMS Incident Offender Parent Involvement](#)

Parent Comment

Comment regarding the parental involvement.

A Parent Comment is REQUIRED if the **Parent Code** is *6: Other*.

▶ [Click here to expand...](#)

Database Location:

BehaviorResolution.parentComment

Ad Hoc Inquiries:

Student > Behavior > Behavior Resolution > parentComment

Reports:

[PIMS Incident Offender Parent Involvement](#)

Behavior Referral

Tool Search: Behavior Referral

Behavior Referral fields that are specific to the state of Pennsylvania are described below. For all other inquiries, please visit the [Behavior Referral](#) article.

Behavior Referral ☆ Behavior Office > Behavior Management > Behavior Referral

Save Draft Submit Delete New

Title	Date/Time	Incident Place Code	Incident Time Frame Code
Fighting	08/15/2024 3:39 PM	On school property/grounds	After school hours

Incident Detail Information
This section stores information specific to the incident and will be shared on all participants behavior tab.

Incident ID: 440150 *Alignment: Discipline *Date of Incident: 08/15/2024 *Time of Incident: 03:39 PM

Title: Fighting

Incident Time Frame Code: 3. After school hours

Context Description: Immediately following the end of the day.

Incident Place Code: 1. On school property/grounds

Location Description: Main gym

Details:

Damages: \$ 0.00

Events and Participants
This section will store event and participant information. Event Details will be shared across participants. Participant Details will only be displayed on that person's behavior tab.

Add Event/Participant Add Behavior Response

Behavior Incident Detail Editor

Incident Time Frame Code

Restraint Staff Type indicates the kind of school staff person who performed a student restraint.

To ensure proper reporting, if **Incident Place Code** is *1:On school property/grounds*, an Incident Time Frame Code is REQUIRED.

▶ [Click here to expand...](#)

Database Location:

BehaviorIncident.location

Ad Hoc Inquiries:

Student > Behavior > Behavior Incident > location

Reports:

[PIMS Incident Template](#)

Incident Place Code

Restraint Staff Type indicates the kind of school staff person who performed a student restraint.

To ensure proper reporting, if **Incident Place Code** is *1:On school property/grounds*, an **Incident Time Frame Code** is REQUIRED.

▶ [Click here to expand...](#)

Code	Description	Definition
1	On school property/grounds	On school property/grounds (e.g., school building, athletic fields)
2	At offsite alternative placement facility	At an offsite alternative placement facility
3	School event/within school jurisdiction	At a school-sponsored event or at an event within the school's jurisdiction (e.g., athletic competition)
4	Off school grounds-jurisdiction other school	Off school grounds at an activity under the jurisdiction of another school (e.g., another school's play)
5	Off school grounds-event sponsored by school	Off school grounds at an activity, function or event sponsored by the school (e.g., visit to a museum)
6	On dist. provided transportation to/from school	On district provided public conveyance providing transportation to and from school
7	On dist. provided transportation to school event	On district provided public conveyance providing transportation to a school (sponsored activity, event, or function)
8	Off school grounds while en route to/from school	Off School grounds while en route to or from school
9	Internet/Online	Internet/Online

Database Location:

BehaviorEvent.location

Ad Hoc Inquiries:

Student > Behavior > Behavior Deactivated > locationClassifier_dep

Behavior Referral Participant Fields

Behavior Referral Participant fields that are specific to the state of Pennsylvania are described below. For all other inquiries, see how to [Add Participants to a Behavior Incident](#).

Participant(s) Details

STUDENT, JAMES (Gender: M Grade: 09 Age: 16 #: 123456) (Uncheck to exclude participant.) [Hide Details](#)

Role: Demerits:

*Injury: Injury Description: Medical Service Provided:

Details:

Weapons Detected:

Weapons Detected Comment:

Weapon Count:

Behavior Participants Detail Editor

Weapons Detected

A description of how the weapons involved in the incident for the offender were detected.

This field is REQUIRED if the Behavior Event State Code is:

- 39: Possession of Handgun or,
- 40: Possession of Rifle/Shotgun or,
- 41: Possession of Other Firearm or,
- 42: Possession of Knife or,
- 43: Possession of Cutting Instrument or,
- 44: Possession of Explosive (Bomb, Missile, etc.) or,
- 45: Possession of BB/Pellet Gun or,
- 46: Possession of Other Weapon or,
- 54: Possession of Weapon

[▶ Click here to expand...](#)

Database Location:

Student > Behavior > Behavior Role > weaponsDetected

Reports:

[PIMS Incident Offender Template](#)

Weapons Detected Comment

A comment describing the detection of a weapon(s). Ex: Knife found outside school property.

To ensure proper reporting, a Weapons Detected Comment is REQUIRED if the **Weapons Detected** field is 5: Other.

[▶ Click here to expand...](#)

Database Location:

BehaviorRole.weaponsDetectedComment

Reports:

[PIMS Incident Offender Template](#)

Weapon Count

If weapons were involved, specify the total number of weapons for this offender, for this incident, and the INFRACTION CODE.

This field is REQUIRED if the Behavior Event State Code is:

- 39: Possession of Handgun or,
- 40: Possession of Rifle/Shotgun or,
- 41: Possession of Other Firearm or,
- 42: Possession of Knife or,
- 43: Possession of Cutting Instrument or,
- 44: Possession of Explosive (Bomb, Missile, etc.) or,
- 45: Possession of BB/Pellet Gun or,
- 46: Possession of Other Weapon or,
- 54: Possession of Weapon

[▶ Click here to expand...](#)

Database Location:

BehaviorRole.weaponCount

Reports:

[PIMS Incident Offender Infraction Template](#)