

Data Options for Data Warehouse

Last Modified on 12/14/2025 8:45 pm CST

[Database Views](#) | [Adding Views to be Flattened](#) | [Views Not Available for Flattening](#) | [Removing Views from Flattening](#)


Tool Search: Data Options

This tool is only available to districts/states that have data warehousing functionality enabled.

The Data Options tool allows a system administrator the ability to manually add/remove specific database views from being "flattened" by the data warehouse optimization process.

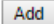
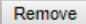
Data Options ☆

System Settings > Data Warehouse > Data Options

 Save

Views moved to the right will be 'flattened' during the data warehouse refresh process. Reports that run against a flattened view generate much faster, but the process of flattening a view is database intensive, increases the time it takes to generate the warehouse, and increases the size of the warehouse. It is recommended that users only include views that are used frequently. Views that appear gray are not available for flattening but are, along with the remaining unselected views, still accessible in the warehouse.

Database Views	Views to Flatten
CCS_calendarUnits	activeTrial
CCS_Counselor	attendanceCode
CCS_disability1	calendarStructure
CCS_disability2	cube_attendance
CCS_DV_CustomStudentSummary	cube_behavior
CCS_specialEdSetting	cube_enrollment
CCS_specialEdStatus	cube_grades
CCS_SpecialEdStudentData	cube_roster
CCS_TranscriptWithCurrentCourses	cube_sped
CCS_view_class	cube_student
LessonPlanActivity	cube_transcript
v_AccountManagement	individual
v_Address	ISEP_3_4_5
v_AdHoc_mnHispanicSubcategories	ISEP_3_4_5_development
v_AdHoc_mnRaceSubcategories	ISEP_3_4_5_Instructional
v_AdHoc_waHispanicSubcategories	ISEP_ADM_Instructional
v_AdHoc_waRaceSubcategories	ISEP_Allotment
v_AdHocADA	ISEP_Basic
v_AdHocADAHist	ISEP_Instructional_final
v_AdHocEarlyWarningScore	ISEP_Res_Final
v_APCheckPayment	ISEP_residential2
v_APVendor	ISEP_SchoolAdj
v_ARCustomer	ISEP_SchoolECR_IRG
v_ARCustomerCreditAvailable	ISEP_Totals
	sectionStaff

Data Options Tool

Database Views

All views existing in the live database (including Campus views and custom district views) are displayed in the **Database Views**. These views are auto-detected by the data warehouse process.

Adding Views to be Flattened

Flattened views yield faster results when querying/reporting from the data warehouse. However, the number of views selected for the flattening process directly affects the amount of time it takes to generate a data warehouse backup. Infinite Campus recommends selecting the most commonly used views for inclusion in the flattening process.

Views may be added to the optimization process at any time by adding them to the **Views to Flatten** box. The views that are currently flattened before inclusion in the data warehouse are shown in the **Views to Flatten** box. Views that are not flattened before inclusion in the data warehouse are listed in the **Database Views** box.

Save

Views moved to the right will be 'flattened' during the data warehouse refresh process. Reports that run against a flattened view generate much faster, but the process of flattening a view is database intensive, increases the time it takes to generate the warehouse, and increases the size of the warehouse. It is recommended that users only include views that are used frequently. Views that appear gray are not available for flattening but are, along with the remaining unselected views, still accessible in the warehouse.

Database Views	Views to Flatten
v_MRLanguage	v_POSDepositSchool
v_MRN142MNPcatA	v_SchoolCurrent
v_MRN142MNPST1	v_SectionRosterOverallSummary
v_MRN142MPCatA	
v_MRN142MPST1	
v_MRN142RLANPCatA	
v_MRN142RLANPST1	
v_MRN142RLAPCatA	
v_MRN142RLAPST1	
v_MRNSC16Months	
v_PO	
v_PORQ	
v_POSDepositSchool	
v_POSEligibilityLocalized	
v_PositiveAttendanceTermSummary	
v_POSPatronSchool	
v_POVendorLocation	
v_SchoolCurrent	
v_SectionRosterOverallSummary	
v_TransportationMostRecent	
v_TransportationParkingMostRecent	
vMREDFactsDropoutsSchool	
vMRN032DropoutsSEA	
vTemp_CountGrad	
vTemp_CountSSN	

Add

Remove

Selected views will be removed from the Database Views box and added to the Views to Flatten box after clicking the Add button

Adding Views to Flattening Process

To add views to the data warehouse optimization process:

1. Select the views to be flattened from the Database Views box.

To select multiple views hold the CTRL or SHIFT keys while clicking on views. Views shown in gray-colored font cannot be flattened. Please refer to the Views Not Available

for Flattening section for more information.

2. Click the **Add** button. The selected views will appear in the Views to Flatten box.
3. Click **Save** to save the changes.

The added views will be flattened/optimized by the data warehouse the next time a backup is generated.

Views Not Available for Flattening

Several complex views cannot be flattened by the data warehouse optimization process. These views appear in gray-colored font in the Database Views box. The following views are not available for flattening:

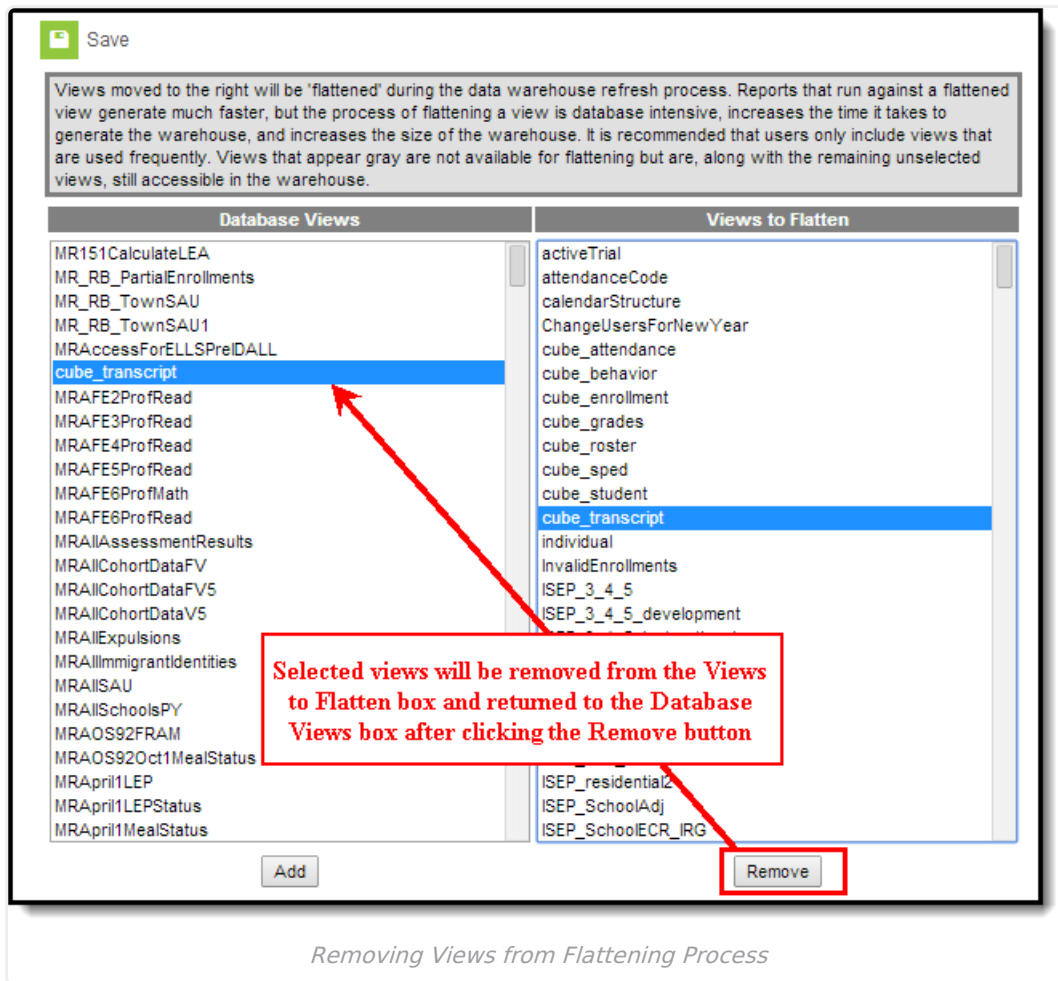
- v_AttDailyDetail
- v_AttDailyExactDetail
- v_AttDailyTermCount
- v_AttendanceCourseCount
- v_AttendanceSectionCount
- v_AttendanceSectionTermSummary
- v_GradebookActivityDetail
- v_SectionRosterAttSummary

Views excluded from the flattening process can still be selected from the data warehouse backup, but reporting off of these views will likely be system-intensive.

Removing Views from Flattening

Removing unnecessary views from the flattening process may shorten the generation time of the data warehouse backup.

Views may be removed from the optimization process at any time by removing them from the **Views to Flatten** box. The views that are currently flattened before inclusion in the data warehouse are shown in the **Views to Flatten** box. Views that are not flattened before inclusion in the data warehouse are listed in the **Database Views** box.



To remove views from the data warehouse optimization process:

1. Select the views to be removed from the flattening process from the Views to Flatten box.

To select multiple views hold the CTRL or SHIFT keys while clicking on views.

2. Click the **Remove** button. The selected views will be moved to the Database Views box.
3. Click **Save** to save the changes.

The removed views will not be flattened/optimized by the data warehouse the next time a backup is generated.