

Refresh Settings

Last Modified on 10/21/2024 8:19 am CDT

[Schedule Data Warehouse Backups | Fields and Definitions](#)

Tool Search: Refresh Settings

This tool is only available to districts/states that have data warehousing functionality enabled.

The Refresh Settings tool allows a system administrator to set a schedule for refreshing the data warehouse to generate data backups. It also allows the system administrator to review the Refresh Log, which displays the progress and details of the most recently generated backup.

Refresh Settings ☆
System Settings > Data Warehouse > Refresh Settings

Save

Data Warehouse Refresh Controls

Stop Refreshing warehouse

Refresh Frequency
1 time only ▼

Start Date
01/01/2007

Start Time
22:00

Age of data in Warehouse
09/16/2019 22:00:00 -050

Status
OK

Refresh Log

```

09/16/2019 22:00: *** Starting the rebuild of the campus data warehouse trumbullDW
09/16/2019 22:00: *** Running the user defined stored procedure dw_user_preBackup on the
trumbull database if it exists.
09/16/2019 22:00: dw_user_preBackup has not been defined.
09/16/2019 22:00: *** Starting backup of trumbull to \\172.16.240.22\DataWarehouse\trumbullDW.BAK
09/16/2019 22:01: Processed 3101400 pages for database 'trumbull', file 'newCampus_Data' on file 1.
09/16/2019 22:01: Processed 8 pages for database 'trumbull', file 'newCampus_Log' on file 1.
09/16/2019 22:01: BACKUP DATABASE successfully processed 3101408 pages in 98.064 seconds
(247.080 MB/sec).
09/16/2019 22:01: *** Backup completed in 1 minutes
09/16/2019 22:01: *** Data warehouse trumbullDW set to single user mode
09/16/2019 22:01: *** Starting restore of trumbullDW...
09/16/2019 22:02: Changed database context to 'master'.
09/16/2019 22:02: Processed 3101400 pages for database 'trumbullDW', file 'newCampus_Data' on
file 1.
09/16/2019 22:02: Processed 8 pages for database 'trumbullDW', file 'newCampus_Log' on file 1.
09/16/2019 22:02: RESTORE DATABASE successfully processed 3101408 pages in 60.241 seconds
(402.213 MB/sec).
09/16/2019 22:02: *** Restore completed in 1 minutes
09/16/2019 22:02: *** Running the user defined stored procedure dw_user_postRestore on the
trumbullDW database if it exists.
09/16/2019 22:02: dw_user_postRestore has not been defined.
09/16/2019 22:02: *** Cleaning up old and inactive data not needed in the warehouse.
09/16/2019 22:15: Changed database context to 'trumbullDW'.
09/16/2019 22:15: Deleted 434826 Rosters in inactive trials
09/16/2019 22:15: Deleted 380872 SectionPlacements in inactive trials
09/16/2019 22:15: The statement has been terminated.
09/16/2019 22:15: Deleted 0 LessonPlanGroupActivities for sections in inactive trials
09/16/2019 22:15: Deleted 0 LessonPlanActivitySubmissions for sections in inactive trials
09/16/2019 22:15: Deleted 0 SubRosters for sections in inactive trials
          
```

Refresh Settings

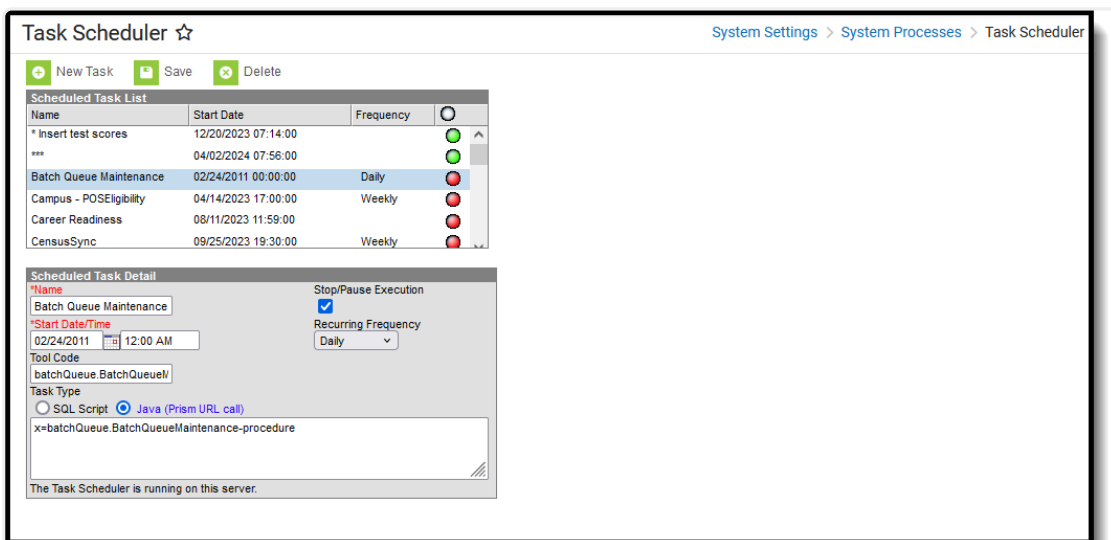
Schedule Data Warehouse Backups

A system administrator should set a schedule for refreshing the data warehouse and creating new backups of the live database. The refresh schedule determines how often a new backup is made available.

Consider Existing System Tasks

Before setting a recurring task for the data warehouse, consider the times/frequencies of other active system tasks to prevent slowed system performance.

Existing system tasks should be reviewed on the [Task Scheduler](#) tool:



Task Scheduler

When a data warehouse task exists on the Refresh Settings tool, it will also appear on this screen. Data warehouse tasks can be viewed but not modified on the [Task Scheduler](#) tool. Data warehouse tasks can only be modified on the Refresh Settings tool.

Scheduling Backups

To set/modify the schedule of data backups, complete the following steps:

1. If a checkmark appears in the **Stop Refreshing Warehouse** box, remove it. This will activate the refresh process. The refresh will not occur if this checkbox is marked.
2. Select a **Refresh Frequency** to set how often the backup will be refreshed.
3. Enter/modify the **Start Date** on which the next refresh schedule should begin.

4. Enter/modify the **Start Time** on which the next refresh should begin.
5. Click **Save** to save the settings. The next backup will occur at the specified date/time.

Save

Data Warehouse Refresh Controls

Stop Refreshing warehouse

Refresh Frequency
Daily ▾

Start Date
06/13/2013 📅

Start Time
20:45

Age of data in Warehouse
06/15/2013 20:44:00 -050

Status
OK

Refresh Log

```

06/15/2013 20:45: *** Starting the rebuild of the campus data warehouse CHUHDW
06/15/2013 20:45: *** Running the user defined stored procedure dw_user_preBackup on the
CHUH database if it exists.
06/15/2013 20:45: dw_user_preBackup has not been defined.
06/15/2013 20:45: *** Starting backup of CHUH to \\10.1.38.68\datawarehouse\CHUHDW.bak
06/15/2013 20:46: Processed 576776 pages for database 'CHUH', file 'newCampus_Data' on file 1.
06/15/2013 20:46: Processed 4 pages for database 'CHUH', file 'newCampus_Log' on file 1.
06/15/2013 20:46: BACKUP DATABASE successfully processed 576780 pages in 53.455 seconds
(84.296 MB/sec).
06/15/2013 20:46: *** Backup completed in 1 minutes
06/15/2013 20:46: *** Data warehouse CHUHDW set to single user mode
06/15/2013 20:46: *** Starting restore of CHUHDW...
06/15/2013 20:52: Changed database context to 'master'.
06/15/2013 20:52: Processed 576776 pages for database 'CHUHDW', file 'newCampus_Data' on file
1.
06/15/2013 20:52: Processed 4 pages for database 'CHUHDW', file 'newCampus_Log' on file 1.
06/15/2013 20:52: Converting database 'CHUHDW' from version 655 to the current version 661.
06/15/2013 20:52: Database 'CHUHDW' running the upgrade step from version 655 to version 660.
06/15/2013 20:52: Database 'CHUHDW' running the upgrade step from version 660 to version 661.
06/15/2013 20:52: RESTORE DATABASE successfully processed 576780 pages in 399.722
seconds (11.273 MB/sec).
06/15/2013 20:52: *** Restore completed in 6 minutes
06/15/2013 20:52: *** Running the user defined stored procedure dw_user_postRestore on the
CHUHDW database if it exists.
06/15/2013 20:52: dw_user_postRestore has not been defined.
06/15/2013 20:52: *** Cleaning up old and inactive data not needed in the warehouse.
06/15/2013 21:00: Changed database context to 'CHUHDW'.
06/15/2013 21:00: Deleted 287459 Rosters in inactive trials
06/15/2013 21:00: Deleted 496992 SectionPlacements in inactive trials
06/15/2013 21:00: Deleted 69 LessonPlanGroupActivities for sections in inactive trials
          
```

Setting the Refresh Schedule

Fields and Definitions

Fields available in the Data Warehouse Refresh Controls editor can be defined as follows:

Field	Definition
-------	------------

Field	Definition
Stop Refreshing Warehouse	<p>This checkbox indicates whether or not the data warehouse is currently active:</p> <ul style="list-style-type: none"> • If box is checked - The data warehouse process is currently "paused" and is not actively taking/storing backup of the live database. The checkmark may be removed from this field at any time. • If box is not checked - The data warehouse is actively taking/storing backup of the live database according to the schedule set by the other fields of the tool.
Refresh Frequency	<p>The data warehouse can be set to refresh one time or scheduled to automatically refresh on a regular basis. The following options are available:</p> <ul style="list-style-type: none"> • 1 Time Only - The data warehouse will be refreshed only once (one backup will be taken at the scheduled date/time). • Weekly - The data warehouse will be refreshed weekly (a new backup will be taken every 7 days, based on the values entered in the Start Date and Start Time fields). • Daily - The data warehouse will be refreshed every day (a new backup will be taken every 24 hours, based on the values entered in the Start Date and Start Time fields).
Start Date	<p>The first day on which the data warehouse will take/store a backup of the live database (assuming the Stop Refreshing Warehouse box is not checked).</p>
Start Time	<p>The time of the day entered in the Start Date field at which the data warehouse will start backing up the live database to create a backup.</p>
Age of Data in Warehouse	<p>The date and time of the most recent data backup stored in the data warehouse. This is the backup from which reports are pulling (unless reporting off of the live database).</p>
Status	<p>The status of the data warehouse refresh process:</p> <ul style="list-style-type: none"> • OK - Data warehouse refresh process completed successfully. • Refresh - Data warehouse refresh currently in progress. • Error - Error occurred during data warehouse refresh process.
Refresh Log	<p>Details on the flatten and storage process of the last data backup.</p>