

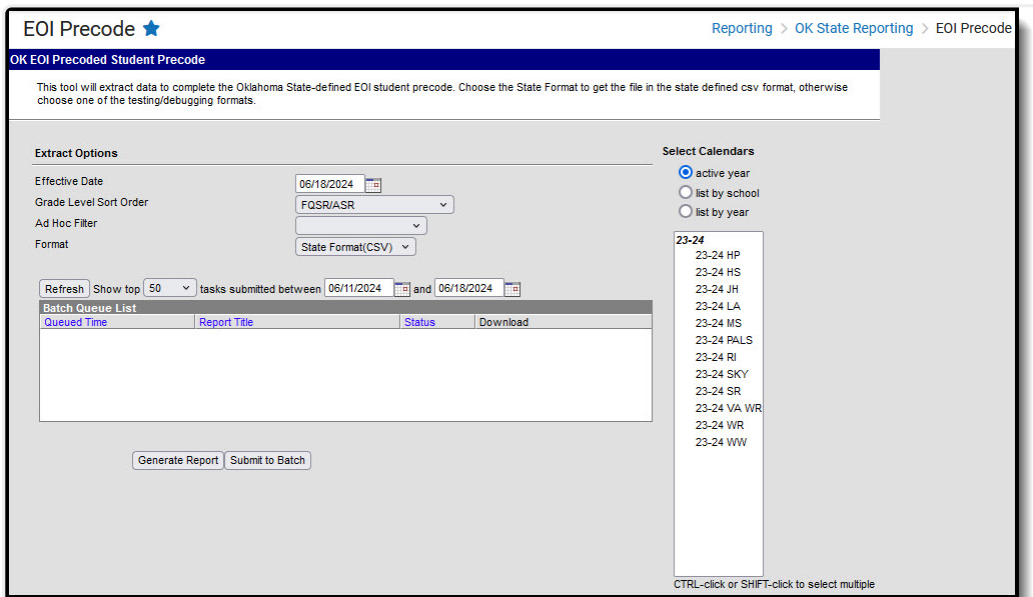
# EOI Precode (Oklahoma)

Last Modified on 10/21/2024 8:21 am CDT

[Report Logic](#) | [Report Editor Options](#) | [Generate the EOI Precode Labels Extract](#) | [EOI Precoded Label Report Layout](#) | [Data Setup](#)

Tool Search: EOI Precode

The End of Instruction (EOI) Precode Extract will generate assessment labels for students in secondary grade levels.



*EOI Precode Report*

## Report Logic

- Only students with a SIF Admission (Enrollments > SIF Fields > Admission) value of the following are included: OHP1, OHP2, OHP3, OHP4, R, OT, RVON, RVOFF, FOY, ACCEPT, and BDR.
- If the student is assigned an Admission code that is NOT one of the above, that student's enrollment is not reported.

## Report Editor Options

Field	Description
<b>Effective Date</b>	This date limits the results of the extract to only those students who were effectively enrolled on that date. Dates can be entered in <i>mmdyy</i> format, or use the calendar icon to select a date.

Field	Description
<b>Grade Level Sort Order</b>	<p>Determines how records are sorted by grade level. Options include the following:</p> <ul style="list-style-type: none"> <li>• <b>FQSR/SAR:</b> reports based on the Code selected for the <a href="#">Grade Level</a>.</li> <li>• <b>Grade Name:</b> reports numeric grades first, then alphabetically.</li> <li>• <b>Grade Sequence Number:</b> reports numerically by sequence.</li> </ul>
<b>Ad hoc Filter</b>	Limits students reported to those in an existing <a href="#">Ad hoc Filter</a> .
<b>Format</b>	<p>Generates the report in one of three options - State Format (CSV), HTML or XML.</p> <p>When submitting the results to the state, use the State Format (CSV) option. For reviewing and testing data prior to submitting the results to the state, use the XML or HTML option.</p>
<b>Select Calendars</b>	The calendars that will be included in the report.
<b>Report Generation</b>	<p>The report can be generated immediately using the <b>Generate Report</b> button. It can also be generated at a specific time using the <b>Submit to Batch</b> button. This allows the report to generate in the background and viewed at a later time, which keeps computing resources free for other tasks. To view reports that have been previously generated, you may choose how many reports to display and a date range for when the reports were generated. Selecting <b>Refresh</b> will returns these fields to their default values.</p>

## Generate the EOI Precode Labels Extract

1. Enter the **Effective Date** of the report.
2. Select a **Grade Level Sort Order**.
3. Select an **Ad hoc Filter**, if desired.
4. Select the **Format** of the extract.
5. Select which **Calendar(s)** to include on the report.
6. Click the **Generate Report** button.

EOI Records:328

District Number (county/district)	School Number	State Testing ID	First Name	Last Name	Middle Initial	Date of Birth - Month	Date of Birth - Day	Date of Birth - Year	Gender	Local Student ID	Grade Enrolled	Ethnicity	Am Indl Ala Na
14I002	650	1001224377	ISABELLA	STUDENT	M	8	4	1999	F	100000	07	1	1
14I002	650	1002469243	SYDNEY	STUDENT	N	7	12	1999	F	100000	07	0	1
14I002	650	1001223377	MAURA	STUDENT	M	12	7	1998	F	100000	07	1	1
14I002	650	1001227867	MIKAYLA	STUDENT	L	9	25	1998	F	100000	07	0	0
14I002	650	1001224376	CAITLIN	STUDENT	B	8	25	1999	F	100000	07	0	0
14I002	650	1001228208	DELANEE	STUDENT	M	4	24	1997	F	100000	07	0	0
14I002	650	1001226716	MARISSA	STUDENT	N	2	15	1998	F	100000	07	0	0
14I002	650	1001219821	HAYLEY	STUDENT	E	8	25	1998	F	100000	07	0	0
14I002	650	1001225607	CHYNA	STUDENT	P	7	1	1998	F	100000	07	0	0

EOI Precode Report - HTML Format

## EOI Precoded Label Report Layout

Elements	Description & Format	Campus Location
<b>District Number</b>	State-assigned number given to the school district.  <i>Numeric, 6 digits</i>	District Information > District Number  District.Number
<b>School Number</b>	District-assigned number given to the school.  <i>Numeric, 3 digits</i>	School Information > School Number  School.Number
<b>State Testing ID</b>	State-assigned student number.  <i>Numeric, 10 digits</i>	Demographics > Student State ID  Person.stateID
<b>First Name</b>	Legal first name of the student.  <i>Alphanumeric, 15 characters</i>	Demographics > First Name  Identity.firstName
<b>Last Name</b>	Legal last name of the student.  <i>Alphanumeric, 20 characters</i>	Demographics > Last Name  Identity.lastName

Elements	Description & Format	Campus Location
<b>Middle Initial</b>	Middle initial of the student.  <i>Alphanumeric, 1 character</i>	Demographics > Middle Name  Identity.middleName
<b>Date of Birth - Month</b>	Student's month of birth.  <i>Numeric, 2 digits</i>	Demographics > Birth Date  Identity.birthdate
<b>Date of Birth - Day</b>	Student's day of birth.  <i>Numeric, 2 digits</i>	Demographics > Birth Date  Identity.birthdate
<b>Date of Birth - Year</b>	Student's year of birth  <i>Numeric, 4 digits</i>	Demographics > Birth Date  Identity.birthdate
<b>Gender</b>	Student's gender  <i>Alphanumeric, 1 character, M or F</i>	Demographics > Gender  Identity.gender
<b>Local Student ID</b>	District-assigned student number.  <i>Numeric, 10 digits</i>	Demographics > Local Student Number  Person.studentNumber
<b>Grade Enrolled</b>	Grade Level of the student. Only grades levels 03-12 are included.  <i>Numeric, 2 characters</i>	Enrollments > Grade  Enrollment.grade
<b>Ethnicity</b>	Indication of the student being identified as having a race/ethnicity of Hispanic.  <i>Numeric, 1 character</i>	Demographics > Race/Ethnicity  Identity.raceEthnicity

Elements	Description & Format	Campus Location
<b>American Indian or Alaskan Native</b>	<p>Indication of the student being identified as having a race/ethnicity of Native American or Alaskan Native.</p> <p><i>Numeric, 1 character</i></p>	<p>Demographics &gt; Race/Ethnicity</p> <p>Identity.raceEthnicity</p>
<b>Asian</b>	<p>Indication of the student being identified as having a race/ethnicity of Asian.</p> <p><i>Numeric, 1 character</i></p>	<p>Demographics &gt; Race/Ethnicity</p> <p>Identity.raceEthnicity</p>
<b>Black or African American</b>	<p>Indication of the student being identified as having a race/ethnicity of Black or African-American.</p> <p><i>Numeric, 1 character</i></p>	<p>Demographics &gt; Race/Ethnicity</p> <p>Identity.raceEthnicity</p>
<b>Native Hawaiian/Other Pacific Islander</b>	<p>Indication of the student being identified as having a race/ethnicity of Native Hawaiian or Pacific Islander.</p> <p><i>Numeric, 1 character</i></p>	<p>Demographics &gt; Race/Ethnicity</p> <p>Identity.raceEthnicity</p>

Elements	Description & Format	Campus Location
<b>White</b>	<p>Indications of the student being identified as having a race/ethnicity of White.</p> <p><i>Numeric, 1 character</i></p>	<p>Demographics &gt; Race/Ethnicity</p> <p>Identity.raceEthnicity</p>
<b>NFAY Code</b>	<p>Indicates the student is considered FAY for the school.</p> <p>See the following <a href="#">FAY Options</a> table following for values.</p> <p><i>Numeric, 1 character</i></p>	<p>Enrollments &gt; State Reporting Fields &gt; Precode &gt; FAY</p> <p>EnrollmentOK.fay</p>
<b>Alt Ed Academy</b>	<p>Indications the student is enrolled in alternative education.</p> <p><i>Numeric, 1 character</i></p>	<p>Enrollments &gt; State Reporting Fields &gt; Precode &gt; ALT ED Academy</p> <p>EnrollmentOK.altEdAcademy</p>
<b>Migrant</b>	<p>Indication student is considered a migrant.</p> <p><i>Numeric, 1 character</i></p>	<p>Enrollments &gt; State Reporting Fields &gt; Migrant</p> <p>Enrollment.migrant</p>

Elements	Description & Format	Campus Location
<b>Title X Part C</b>	<p>Reports based on the selection made in the Homeless field. If Homeless is Null or 0, reports as 0. If Homeless is not Null or 0, reports as 1.</p> <p><i>Numeric, 1 character</i></p>	<p>Enrollments &gt; State Reporting Fields &gt; Homeless</p> <p>Enrollment.homeless</p>
<b>Free/Reduced Lunch</b>	<p>Indication of the student's meal status/economic eligibility. Reports based on the student's Eligibility and the School History tab.</p> <p>See field logic in the following <a href="#">Free/Reduced Lunch Logic</a> section.</p> <p><i>Numeric, 1 character</i></p>	<p>FRAM &gt; Eligibility &gt; Eligibility Editor &gt; Eligibility</p> <p>FRAM.mealStatus</p>
<b>Distance Learning</b>	<p>Indicates the student qualifies for distance learning.</p> <p><i>Numeric, 1 character</i></p>	<p>Enrollments &gt; State Reporting Fields &gt; Precode &gt; Distance Learning</p> <p>EnrollmentOK.distanceLearning</p>

Elements	Description & Format	Campus Location
<b>Testing Subject</b>	<p>Notes the subjects for which the student is taking the assessment.</p> <p>See the following <a href="#">Precode Course Subject Options</a> table for values.</p> <p><i>Alphanumeric, 4 characters</i></p>	<p>Courses Information &gt; Precode Course Subject</p> <p>EnrollmentOK.testingSubject</p>
<b>Testing Platform</b>	<p>Indicates the format in which the student can take the assessment.</p> <p>1 = Online 2 = Paper 3 = Electronic Portfolio (OAAP)</p> <p><i>Numeric, 1 character</i></p>	<p>Enrollments &gt; State Reporting Fields &gt; Precode &gt; Testing Platform</p> <p>EnrollmentOK.testingPlatform</p>
<b>Teacher/Class Name</b>	<p>Reports the primary teacher's first name, last name and period for which the course section was scheduled.</p> <p>A blank in this field will result in defaulting the teacher/class name based off testing subject followed by "No Class Name."</p> <p><i>Alphanumeric, 20 characters</i></p>	<p>Section Information &gt; Primary Teacher</p> <p>Section.teacherDisplay</p>



Elements	Description & Format	Campus Location
<b>Test Window</b>	<p>Indicates the expected testing window. Currently reports as 2.</p> <p><i>Numeric, 1 digit</i></p>	Not dynamically stored
<b>2nd Time Test Opportunity</b>	<p>Indicates the student has the opportunity to take the EOI test a second time.</p> <p><i>Numeric, 1 character, 1 or 2</i></p>	<p>Enrollments &gt; State Reporting Fields &gt; Precode &gt; 2nd Time Test Opportunity</p> <p>EnrollmentOK.secondTimeTestOpportunity</p>
<b>504</b>	<p>Indication of student being enrolled in a Section 504 plan.</p> <p>If this field is marked and any of the four following accommodation fields are checked, report 1. If this field is checked but none of the accommodation fields are checked, report 2. If this field is unchecked, report 0.</p> <p><i>Numeric, 1 character</i></p>	<p>Enrollments &gt; State Reporting Fields &gt; 504</p> <p>Enrollment.504</p>

Elements	Description & Format	Campus Location
<b>IEP (Individualized Education Plan)</b>	<p>Indicates the student has a special education status.</p> <p>If this field is marked and any of the four following accommodation fields are checked, report 1. If this field is checked but none of the accommodation fields are checked, report 2. If this field is unchecked, report 0.</p> <p><i>Numeric, 1 character</i></p>	<p>Enrollments &gt; Special Education Fields &gt; Special Education Status</p> <p>Enrollment.specialEdStatus</p>
<b>IEP or 504 Accommodation - Setting</b>	<p>Indicates the student has a 504 plan for setting.</p> <p><i>Numeric, 1 character, 1 or 2</i></p>	<p>Enrollments &gt; State Reporting Fields &gt; Precode &gt; IEP/504 Accommodation - Setting</p> <p>EnrollmentOK.iepOr504AccommodationSetting</p>
<b>IEP or 504 Accommodation - Presentation</b>	<p>Indicates the student has a 504 plan for presentation.</p> <p><i>Numeric, 1 character, 1 or 2</i></p>	<p>Enrollments &gt; State Reporting Fields &gt; Precode &gt; IEP/504 Accommodation - Present</p> <p>EnrollmentOK.iepOr504AccommPresent</p>
<b>IEP or 504 Accommodation - Timing/Scheduling</b>	<p>Indicates the student has a 504 plan for timing or scheduling.</p> <p><i>Numeric, 1 character, 1 or 2</i></p>	<p>Enrollments &gt; State Reporting Fields &gt; Precode &gt; IEP/504 Accommodation - TimingSche.</p> <p>EnrollmentOK.iepOr504AccommTimingSche</p>

Elements	Description & Format	Campus Location
<b>IEP or 504 Accommodation - Response</b>	<p>Indicates the student has a 504 plan for response.</p> <p><i>Numeric, 1 character, 1 or 2</i></p>	<p>Enrollments &gt; State Reporting Fields &gt; Precode &gt; IEP/504 Accommodation - Response</p> <p>EnrollmentOK.iepOr504AccommodationResponse</p>
<b>IEP Braille</b>	<p>Indicates the student has an IEP due to blindness.</p> <p><i>Numeric, 1 character, 1 or 2</i></p>	<p>Enrollments &gt; State Reporting Fields &gt; Precode &gt; IEP Braille</p> <p>EnrollmentOK.braille</p>
<b>IEP Large Print</b>	<p>Indicates the student has an IEP due to poor vision.</p> <p><i>Numeric, 1 character, 1 or 2</i></p>	<p>Enrollments &gt; State Reporting Fields &gt; Precode &gt; IEP Large Print</p> <p>Enrollment.iepLargePrint</p>

Elements	Description & Format	Campus Location
<p><b>ELL First or Second Year Proficient</b></p>	<p>Indicates the student is in ELL programming and is considered wither first or second year proficient.</p> <p>When the student has an EL record with a Program Status of Exited EL as of the Effective Date and the Effective Date is less than or equal to a year from the First Year Monitoring Date, reports as <b>1</b>.</p> <p>If the Effective Date is greater than the First Year Monitoring Date and less than or equal to the Second Year Monitoring Date, reports as <b>2</b>. Otherwise reports blank.</p> <p><i>Numeric, 1 character</i></p>	<p>English Learners (EL)</p> <p>Calculated, not dynamically stored</p>

Elements	Description & Format	Campus Location
<b>ELL (English Language Learner)</b>	<p>Indicates the student is considered an English Language Learner.</p> <p>If the student has an EL record active on the Effective Date and any Accommodations 1-5 are active on the Effective Date, reports as <b>1</b>. If the student has an EL record but no Accommodations, reports as <b>2</b>. Otherwise, reports blank.</p> <p><i>Numeric, 1 character</i></p>	<p>English Learners (EL), EL Accommodations &gt; Code</p> <p>Calculated, not dynamically stored</p>
<b>ELL Accommodation - Translator</b>	<p>Indicates the student is ELL and needs a translator. If the student has an EL record active on the Effective Date with an EL Accommodation of Translator, reports as <b>1</b>.</p> <p><i>Numeric, 1 character, 1 or 2</i></p>	<p>English Learners (EL) &gt; EL Accommodations &gt; Code</p> <p>LEPAccommodationType.code</p>

Elements	Description & Format	Campus Location
<b>ELL Accommodation - Transcribe</b>	<p>Indicates the student is ELL and needs transcription. If the student has an EL record active on the Effective Date with an EL Accommodation of Transcribe, reports as <b>1</b>.</p> <p><i>Numeric, 1 character, 1 or 2</i></p>	<p>English Learners (EL) &gt; EL Accommodations &gt; Code</p> <p>LEPAccommodationType.code</p>
<b>ELL Accommodation - Clarification</b>	<p>Indicates the student is ELL and needs clarification. If the student has an EL record active on the Effective Date with an EL Accommodation of Clarification, reports as <b>1</b>.</p> <p><i>Numeric, 1 character, 1 or 2</i></p>	<p>English Learners (EL) &gt; EL Accommodations &gt; Code</p> <p>LEPAccommodationType.code</p>
<b>ELL Accommodation - Grouping</b>	<p>Indicates the student is ELL and needs special grouping. If the student has an EL record active on the Effective Date with an EL Accommodation of Grouping, reports as <b>1</b>.</p> <p><i>Numeric, 1 character, 1 or 2</i></p>	<p>English Learners (EL) &gt; EL Accommodations &gt; Code</p> <p>LEPAccommodationType.code</p>

Elements	Description & Format	Campus Location
<b>ELL Accommodation - W/W Dictionary</b>	Indicates the student is ELL and needs a dictionary. If the student has an EL record active on the Effective Date with an EL Accommodation of W/W Dictionary, reports as <b>1</b> .  <i>Numeric, 1 character</i>	English Learners (EL) > EL Accommodations > Code  LEPAccommodationType.code

## FAY Options

The DRC Precode Extract reports three separate statuses for FAY (full academic year) - NFAY\_SCHL, NFAY\_DIST and NFAY\_STATE.

The following options are available for selection on a student's enrollment record:

Code	Description
<b>0</b>	Student is FAY at all levels.
<b>1</b>	Student is NFAY in school.
<b>2</b>	Student is NFAY in district and school.
<b>3</b>	Student is NFAY in state, district and school.

### Reporting Business Rules

- This field is defaulted to 0: Student is FAY at all levels.
- If a student has another enrollment in the same calendar year, the FAY status selected is the same.
- If a new enrollment is created for a student in the next calendar year, the FAY status defaults back to zero.

### NFAY\_SCHL Logic:

- If set to 0 (zero), extract will report as zero.
- If 1: NFAY in school, will report as 1.
- If 2: NFAY in district and school, will report as 1.
- If 3: NFAY in state, district and school, will report as 1.

### NFAY\_DIST Logic:

- If set to 0 (zero), extract will report as zero.
- If 1: NFAY in school, will report as 0.
- If 2: NFAY in district and school, will report as 1.
- If 3: NFAY in state, district and school, will report as 1.

### NFAY\_STATE Logic:

- If set to 0 (zero), extract will report as zero.
- If 1: NFAY in school, will report as 0.
- If 2: NFAY in district and school, will report as 0.
- If 3: NFAY in state, district and school, will report as 1.

## Free/Reduced Lunch Logic

On the School History tab, if NSLP is marked and Provision 1, 2 or 3 is selected, reports as 1.

If the above is not true, reports 1 if the student's eligibility is "free" or "reduced," AND Eligibility record is Active. Also reports as 1 if the student's FRAM Eligibility record with the most recent Start Date that is on or before the extract Effective Date has a Start Date on or before the current date, an End Date on or after the current date, an Eligibility of Paid and a Certified Type of Declined. If the student does not have an active record but the 30 Day Carry-Over rule applies, the Snapshot Date is less than 30 days into the current year OR the student had a record at the end of the previous school year, reports 1. If no Carry-Over rule is present, only the current year status is considered. Otherwise, the field reports as blank.

## Precode Course Subject Options

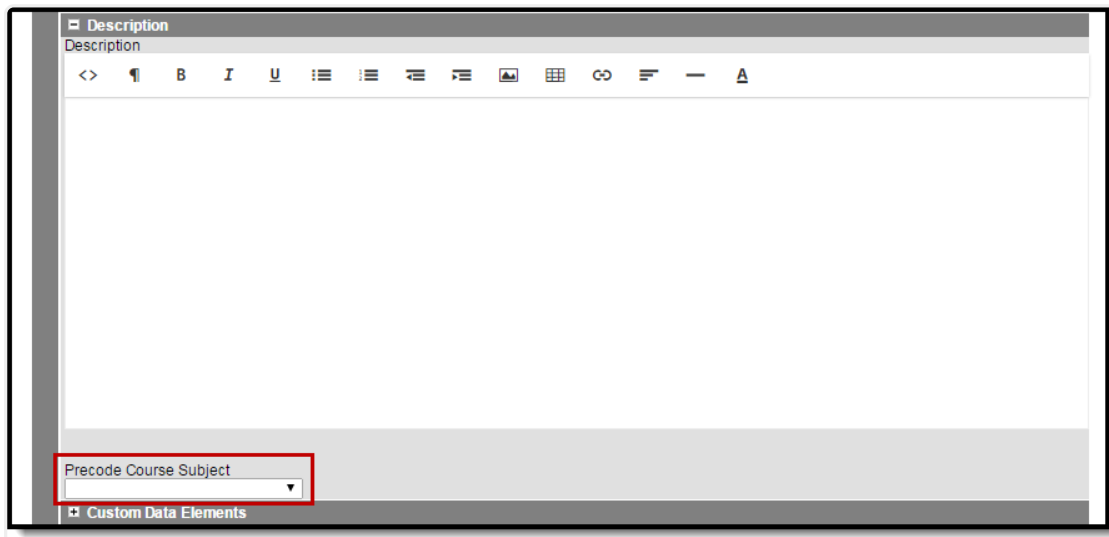
Code	Description
<b>OCCTALG1</b>	ACE Algebra I
<b>OCCTALG2</b>	ACE Algebra II
<b>OCCTBIO1</b>	ACE Biology I
<b>OCCTHIST</b>	ACE US History
<b>OCCTGEOM</b>	ACE Geometry
<b>OCCTENG2</b>	ACE English II
<b>OCCTENG3</b>	ACE English
<b>OMAAPALG1</b>	Algebra I
<b>OMAAPBIO1</b>	Biology I
<b>OMAAPENG2</b>	English II
<b>OMAAPHIST</b>	U.S. History



Code	Description
<b>OAAPALG1</b>	OAAP Algebra I
<b>OAAPALG2</b>	OAAP Algebra II
<b>OAAPGEOM</b>	OAAP Geometry
<b>OAAPENG2</b>	OAAP English II
<b>OAAPENG3</b>	OAAP English III
<b>OAAPBIO1</b>	OAAP Biology I
<b>OAAPHIST</b>	OAAP U.S. History

## Data Setup

The Precode Course Subject dropdown list appears at the bottom of the [Course](#) editor (Course Information > Precode Course Subject).



*Precode Course Subject Field*

The ELL fields are found in the student's LEP Accommodations tab.

The IEP/504 Accommodation fields are found in the following location on the student's enrollment record.

Enrollments ★ Student Information > General > Enrollments

Student #:  Grade:  DOB:

**Precode**

<input type="checkbox"/> IEP/504 Accom - Setting	<input type="checkbox"/> IEP/504 Accom - Present
<input type="checkbox"/> IEP/504 Accom - Response	<input type="checkbox"/> IEP/504 Accom - TimingSche.

IEP Braille     IEP Large Print     Other Placement     2nd Time Test Opportunity     Distance Learning

Testing Platform:     **FAY**:

IEP/504 Enrollment Fields