

Scanning Administration and Tool Rights

Last Modified on 03/11/2024 8:46 am CDT

The Scanning toolset is part of the [Campus Workflow Suite](#).

[Scanning Printer Setup](#) | [Install QZ Tray 2.2.2](#) | [Printer Setup](#) | [Scanning Tool Rights](#)

System administrators can manage scanning preferences and custom scanners with the System Administration Scanning tools. Review [Hardware: Campus Workflow Suite](#) for more information on our supported hardware.

- [Custom Scanners](#)
- [Scanner Settings](#)

Scanning Printer Setup

A separate software, QZ Tray, must be downloaded in order to configure scanning printers. This software bypasses the print confirmation screen in browsers to automatically one-click-print hall passes. The following scanning tools use this print setup:

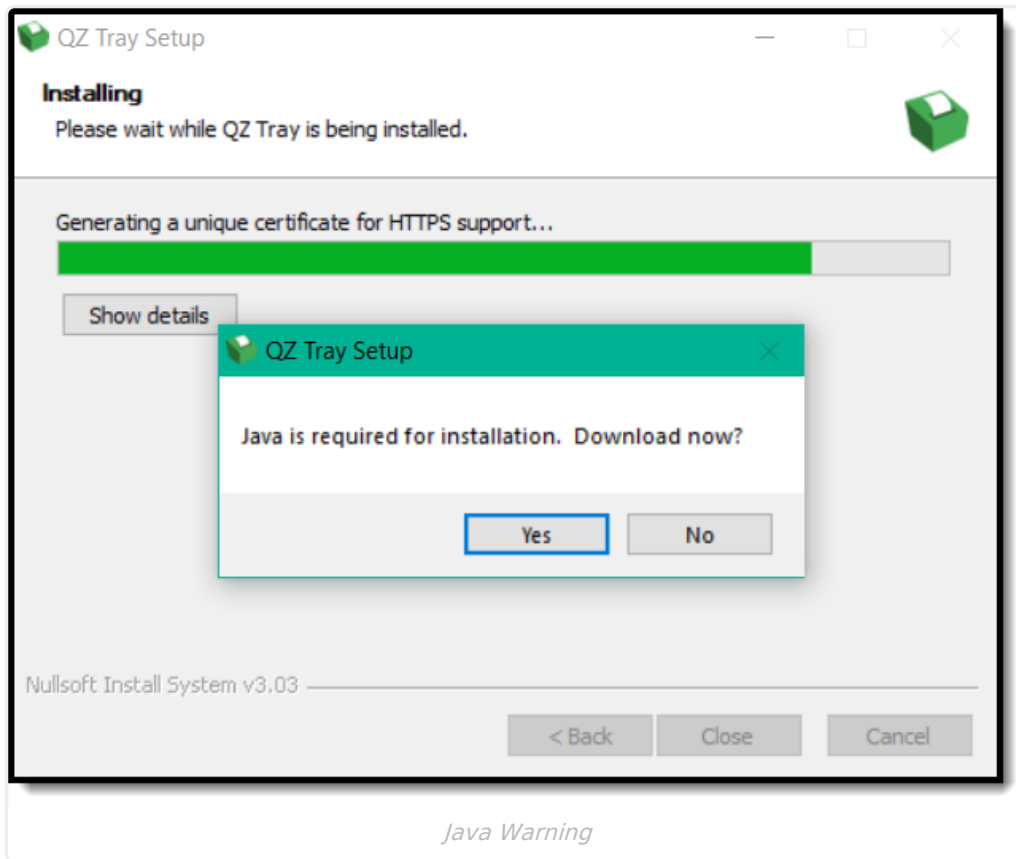
- [Custom Scanners](#)
- [Check In/Out](#)
- [Check In/Out Kiosk](#)
- [Hall Monitor Scanner](#)
- [Health Office Kiosk](#)
- [Counseling Kiosk](#)

The version of QZ Tray is 2.2.2. (https://updates.infinitecampus.com/_download/public-proxy-production-virtual/com/infinitecampus/qztray/2.2.2/qz-tray-2.2.2-x86_64.exe) Other versions of QZ Tray are not supported.

Install QZ Tray 2.2.2

The printer setup is the same across browsers, but only for Windows machines. If you cannot suppress the security warnings from QZ Tray, the program may have been downloaded from the wrong location.

Make sure the version selected is "qz-tray-community-2.2.2.exe" and follow the prompts of the install. Java must be installed in order for QZ Tray to download.

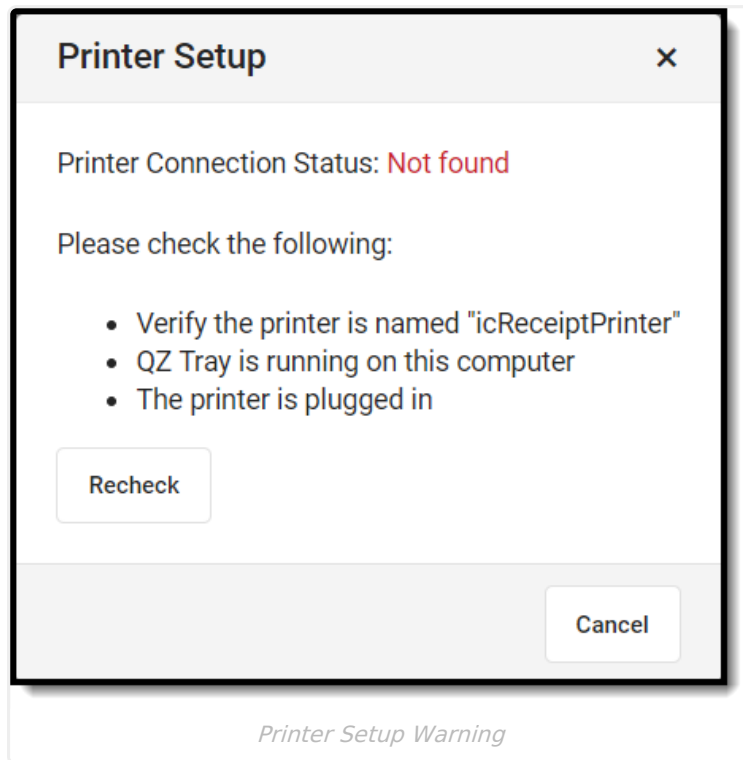


Once QZ Tray is installed successfully, connect to the desired printer.

Printer Setup

Name the printer "icReceiptPrinter" to make sure hall passes are printed to the correct printer. See the documentation for your specific hardware for specific printer setup information.

If a printer is not setup, the **No Printer** No Printer button displays in the action bar. Click this button to view the **Printer Setup** warning:

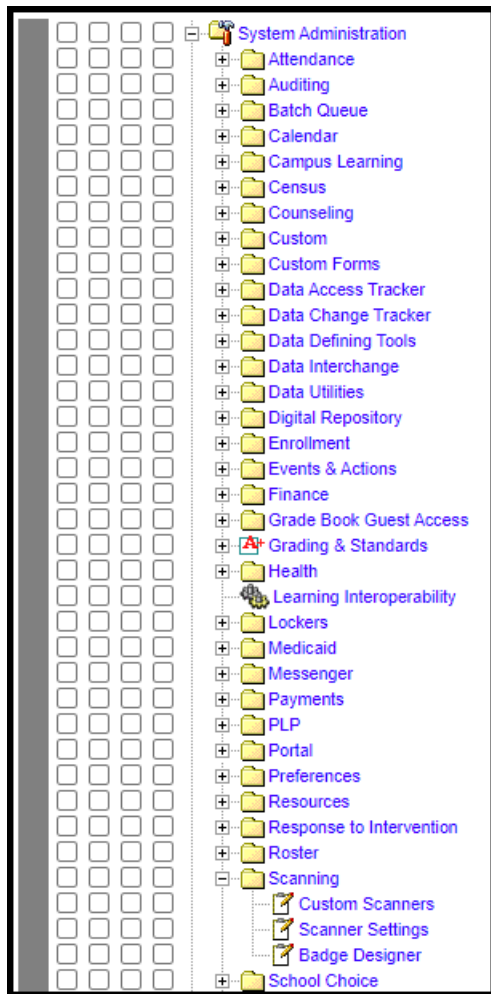


Scanning Tool Rights

Tool Rights determine the level of access users have to tools throughout Campus. This article refers to tool rights in abbreviated form (i.e., R, W, A, D or any combination of the four). Sub-rights appear as *italicized*.

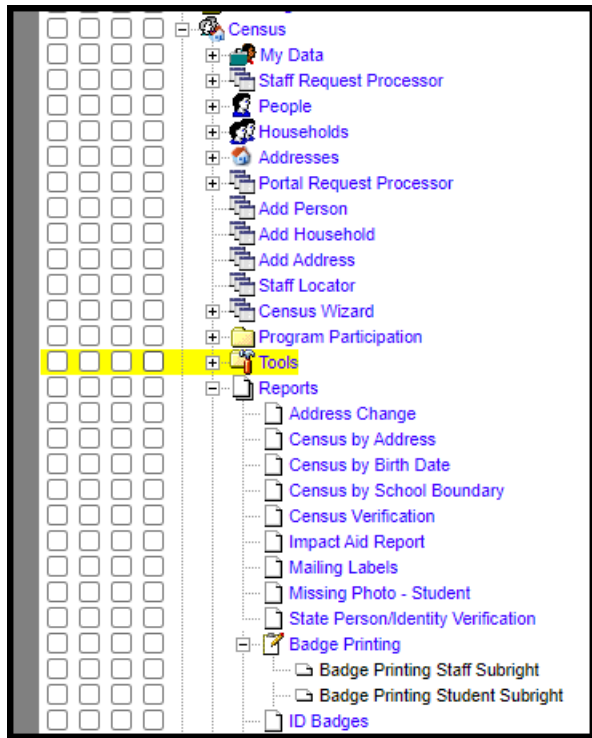
Right	Description
R (Read)	The R right indicates the information on the corresponding tool may be viewed by the user. When applicable, the user is also allowed to print information. The user will NOT have access to the Save, Add or Delete icons in the action bar.
W (Write)	The W right indicates the user may view and modify the information on the corresponding tool. The Save icon in the action bar will be functional. This right allows the user to modify only existing data in the area since adding new data is controlled by the A right. This right includes the ability to change or remove data from a specific field.
A (Add)	The A right indicates the user may view, modify and add to the information on the corresponding tool. The New and Add icons in the action bar will be functional. This right allows the user to add new data/records.
D (Delete)	ASSIGN THIS RIGHT WITH CAUTION. The D right indicates the information on the corresponding tool may be deleted. The Delete icon in the action bar will be functional. This right provides the ability to completely remove an existing record, including all data contained within the record. The ability to change/remove data from a field is controlled through the W right.

System Administration Scanning Rights



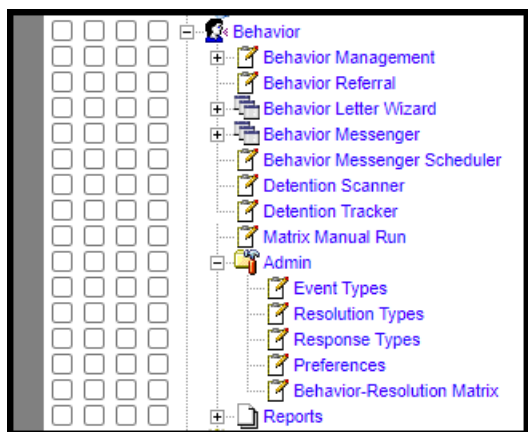
Tool	R	W	A	D
Custom Scanners	Allows users to view existing custom scanners.	Allows users to edit existing custom scanners.	Allows users to add new custom scanners.	Allows users to delete custom scanners.
Scanner Settings	Allows users to view existing scanner settings.	Allows users to edit scanner settings.	N/A	N/A
Badge Designer	Allows the user to view existing badge templates.	Allows the user to edit existing badge templates.	Allows the user to add new and edit existing badge templates.	Allows the user to delete badge templates.

Badge Printing Rights



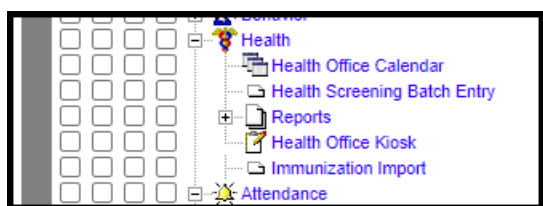
Tool	R	W	A	D
Badge Printing	Allows the user to print both student and staff badges.	N/A	N/A	N/A
Badge Printing Staff Subright	Allows the user to print staff badges.	N/A	N/A	N/A
Badge Printing Student Subrights	Allows users to print student badges.	N/A	N/A	N/A

Behavior Scanning Rights



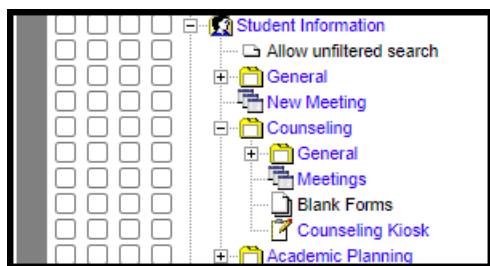
Tool	R	W	A	D
Detention Scanner	Allows the user to scan in students.	N/A	N/A	N/A
Matrix Manual Run	Allows the user to run the tool and preview the results.	N/A	Allows the user to assign behavior resolutions.	N/A
Behavior Resolution Matrix	Allows the user to view existing matrices.	Allows the user to edit existing matrices.	Allows the user to add and edit matrices.	Allows the user to delete matrices.

Health Scanning Rights



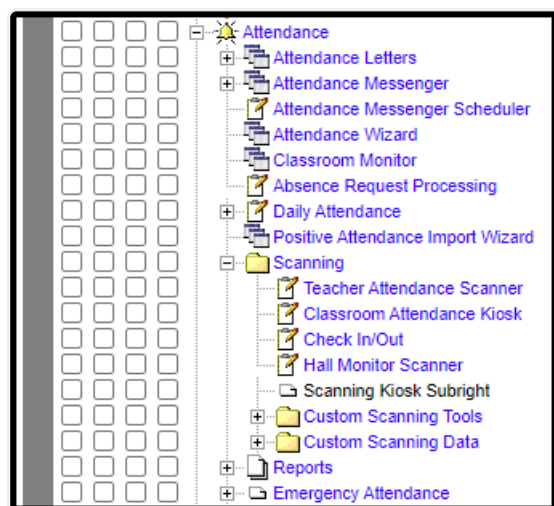
Tool	R	W	A	D
Health Office Kiosk	Allows the user to scan in students.	N/A	N/A	N/A

Counseling Scanning Rights



Tool	R	W	A	D
Counseling Kiosk	Allows the user to scan in students.	N/A	N/A	N/A

Attendance Scanning Rights



Scanning Tool Rights

Tool	R	W	A	D
Teacher Attendance Scanner	Allows the user to scan in students.	Allows the user to change the Tardy Threshold.	N/A	N/A
Classroom Attendance Kiosk	Allows the user to scan in students.	N/A	N/A	N/A
Check In/Out	Allows the user to scan in students.	N/A	N/A	N/A
Hall Monitor Scanner	Allows the user to scan in students.	N/A	N/A	N/A

Tool	R	W	A	D
Scanning Kiosk Subright	This subright should be assigned to a system user "ScanningKioskUser."	N/A	N/A	N/A
Custom Scanning Tools	Allows the user to scan in students.	N/A	N/A	N/A
Custom Scanning Data	Allows the user to view custom scanning data.	N/A	N/A	N/A